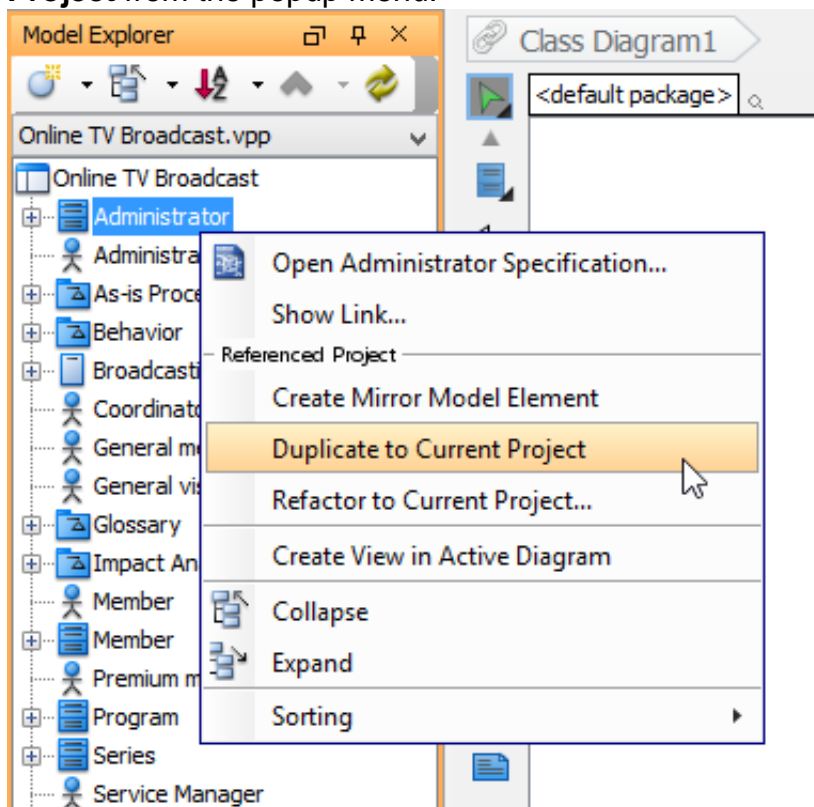

Creating a local copy from referenced project's element

When we have added a referenced project, we say we are referencing that project. By reference, it's like a linkage that points to the actual data stored in referenced project. Those elements borrowed from referenced project are not editable by current project.

Sometimes, you need the elements created in another project, not to appear in the form of references but to make it become your own data. You will need to duplicate element from linked project. To duplicate a model element:

1. Open the **Model Explorer** by opening the **View** tab of the toolbar and selecting **Panes > Model Explorer** to show it.
2. Right click on the element you want to duplicate and select **Duplicate to Current Project** from the popup menu.



The duplicated element can be found in **Model Explorer**, under current project.

