

---

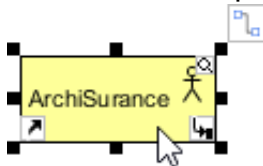
## How to format ArchiMate elements

Visual Paradigm supports a wide range of formatting options that can be applied to [ArchiMate](#) elements. In this article we will go through some of them.

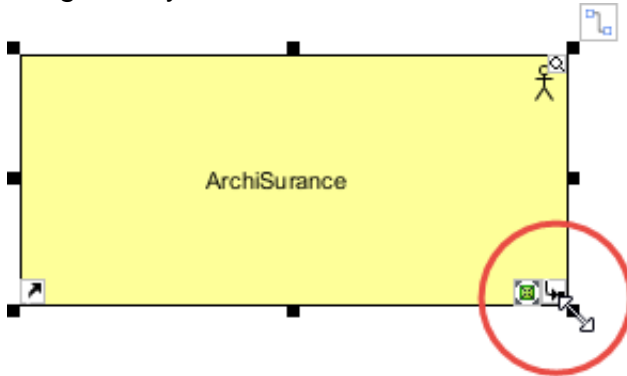
### Resizing ArchiMate shapes

You can make a shape bigger or smaller through resizing it. Note that the graphical notation will remain unambiguously regardless of its size and proportion.

1. Click on the shape to select it.



2. Drag on any of its handler to resize it.



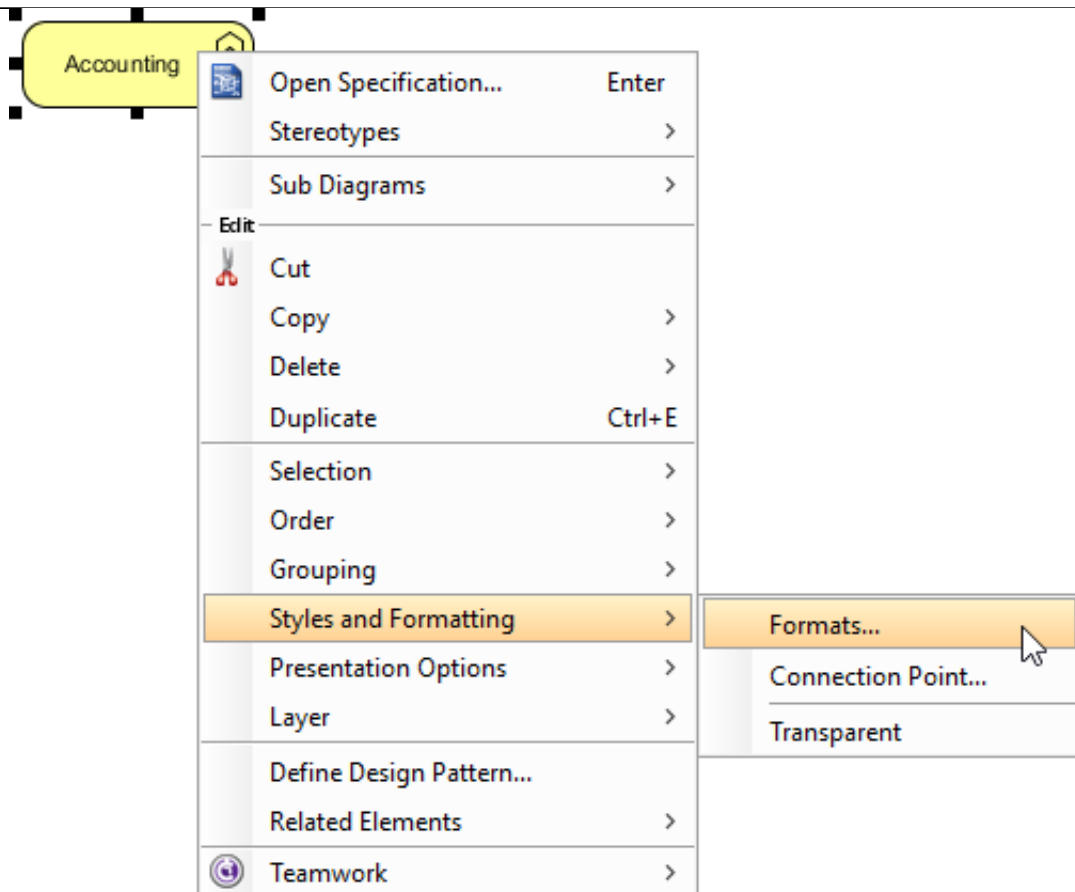
3. Release the mouse button.



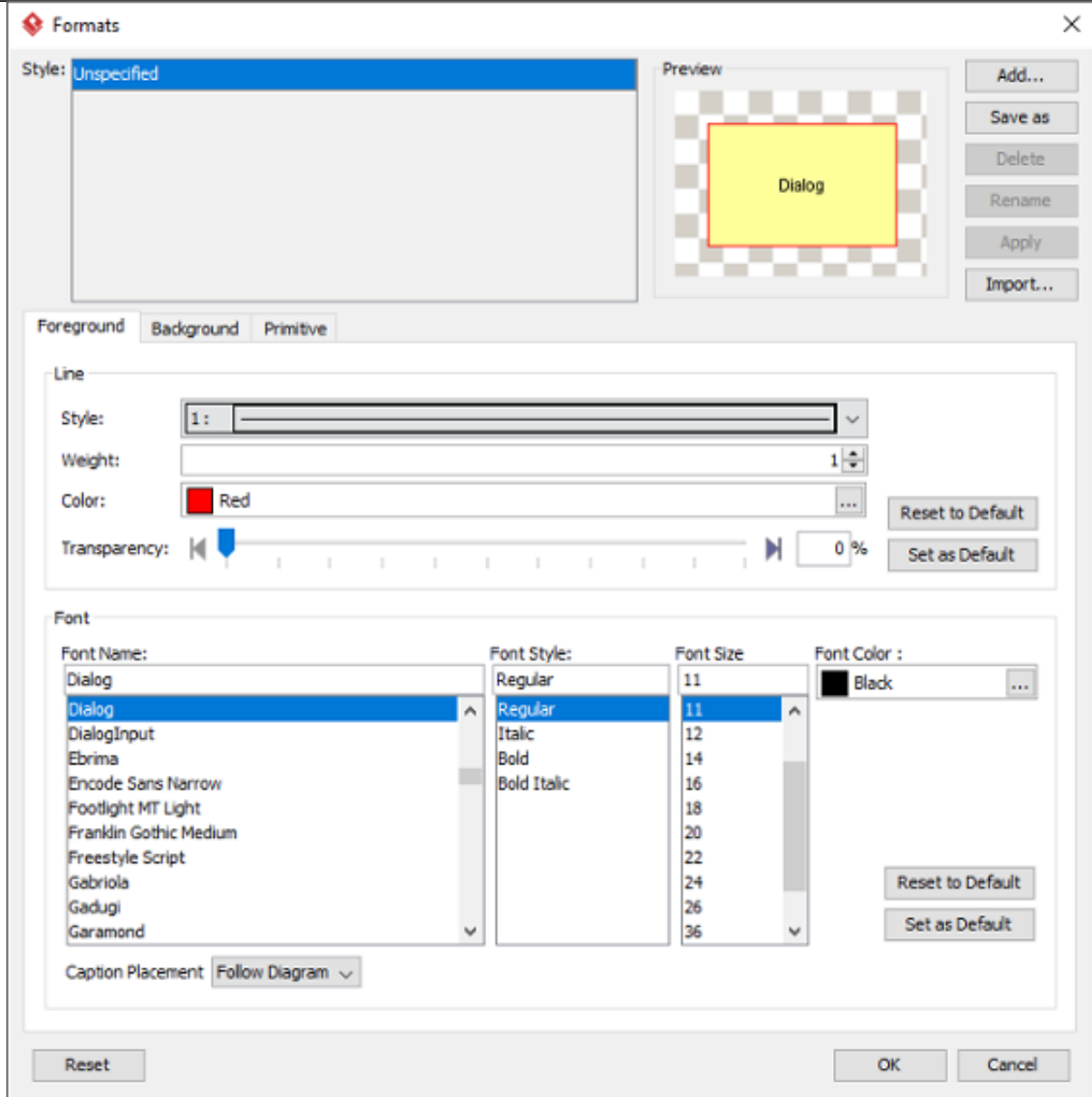
### Changing ArchiMate shapes' color

A typical reason why you need to give different colors to ArchiMate shapes is when you need to present the result of Gap Analysis by means of an ArchiMate diagram. You can assign different colors to elements that exist in baseline architecture, newly added and will be removed in target architecture. Let's see how to set color to shapes.

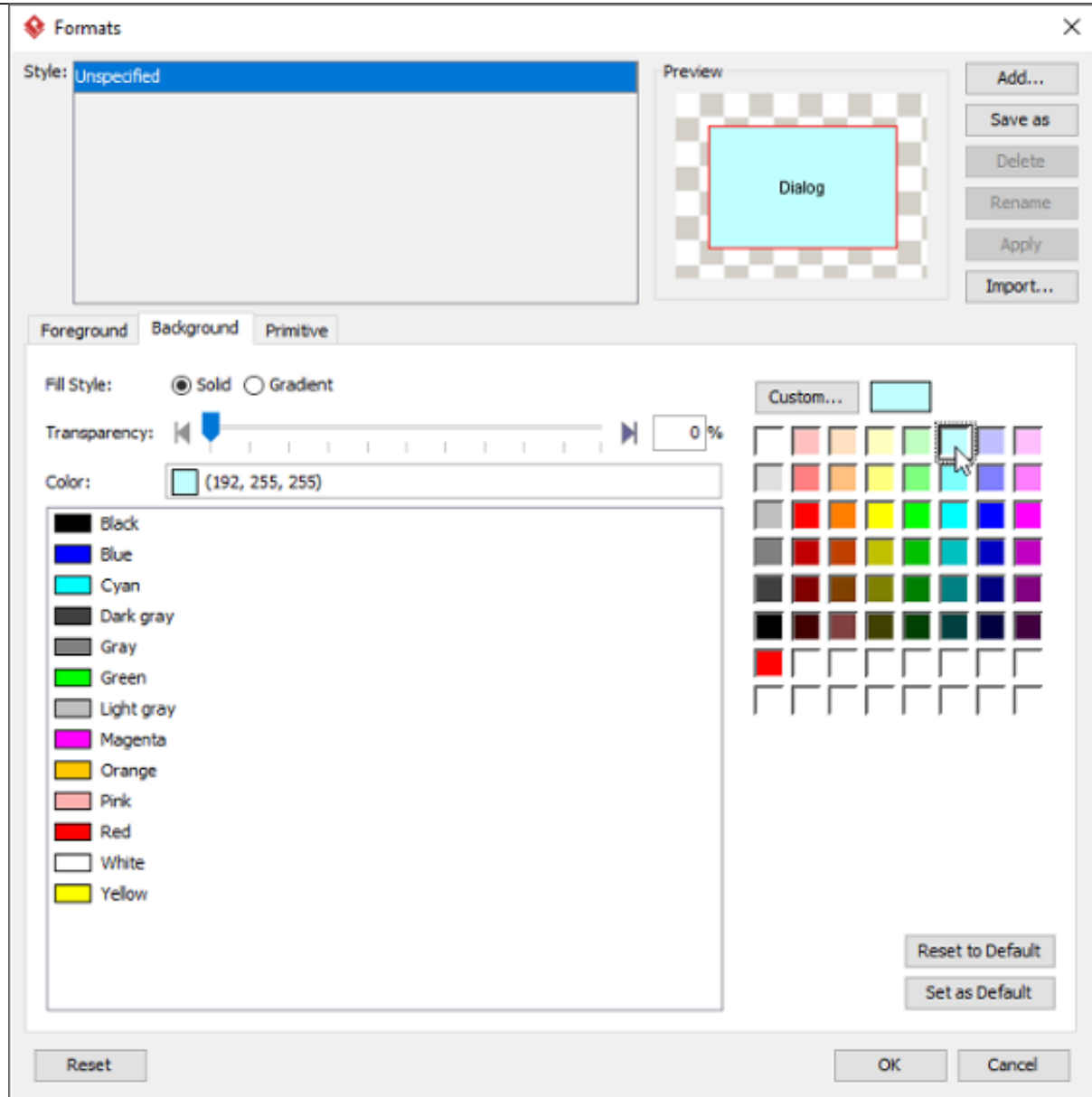
1. Right click on the shape that you want to edit its color, and then select **Styles and Formatting > Formats...** from the popup menu.



2. This shows the **Formats** window. You can edit the line and font properties under the **Foreground** tab.



3. And edit the background under the **Background** tab.



4. Click **OK** to confirm and return to diagram. The shape is presented in new format.

