

---

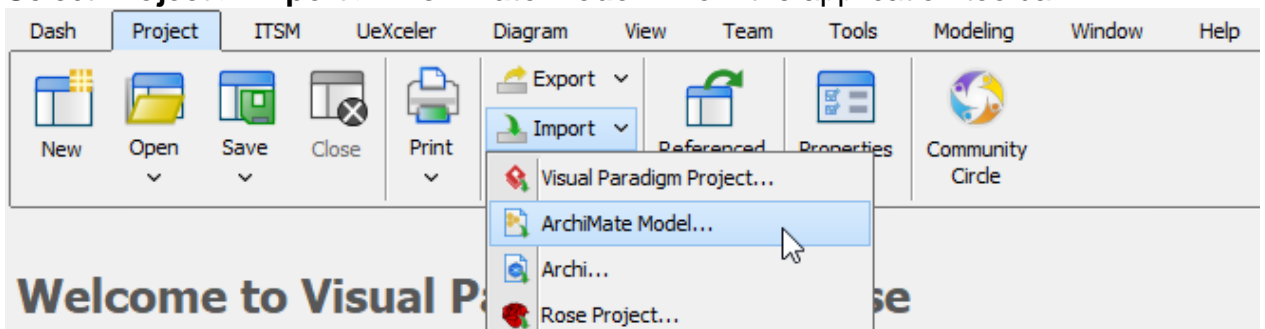
# How to import/export ArchiMate Model Exchange file

The [Open Group ArchiMate Model Exchange File Format](#) is a standard file format for the exchange of [ArchiMate](#) models between different tools. Visual Paradigm supports the importing and exporting of Open Group ArchiMate Model Exchange File. In this article we will show you how to do this.

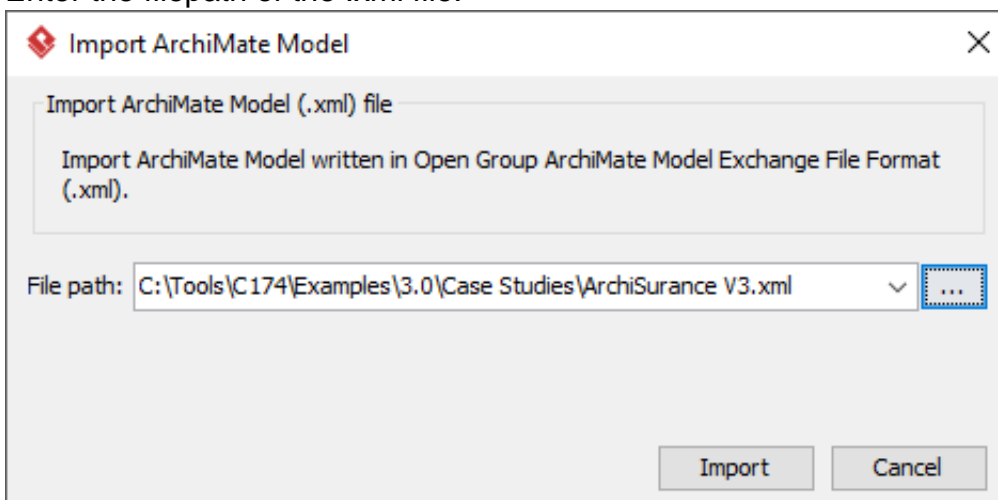
## Importing ArchiMate Model into Visual Paradigm

You can import OpenGroup ArchiMate Model Exchange File into Visual Paradigm. The steps below use an example available under [opengroup.org](http://opengroup.org) to show you how the import process works. You can download the same example at <https://www.opengroup.org/bookstore/catalog/C174>.

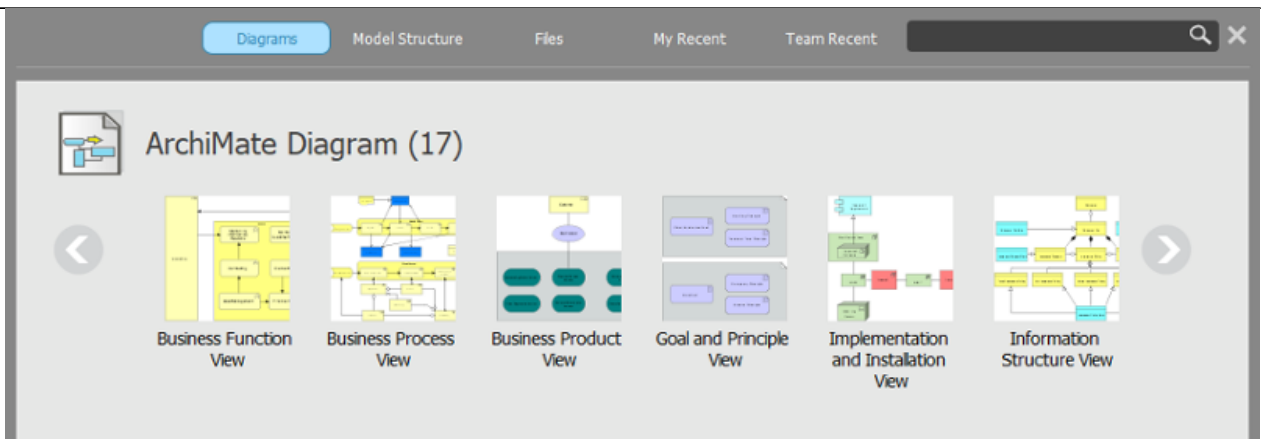
1. Select **Project > Import > ArchiMate Model...** from the application toolbar.



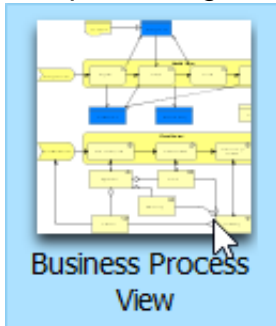
2. Enter the filepath of the .xml file.



3. Click **Import**. When finished, find the imported diagrams in Project Browser. You can open Project Browser by selecting **Project > Project Browser** from the application toolbar.



4. To open a diagram, double click on its thumbnail.



The diagram is then opened in Visual Paradigm and you can continue working on it.

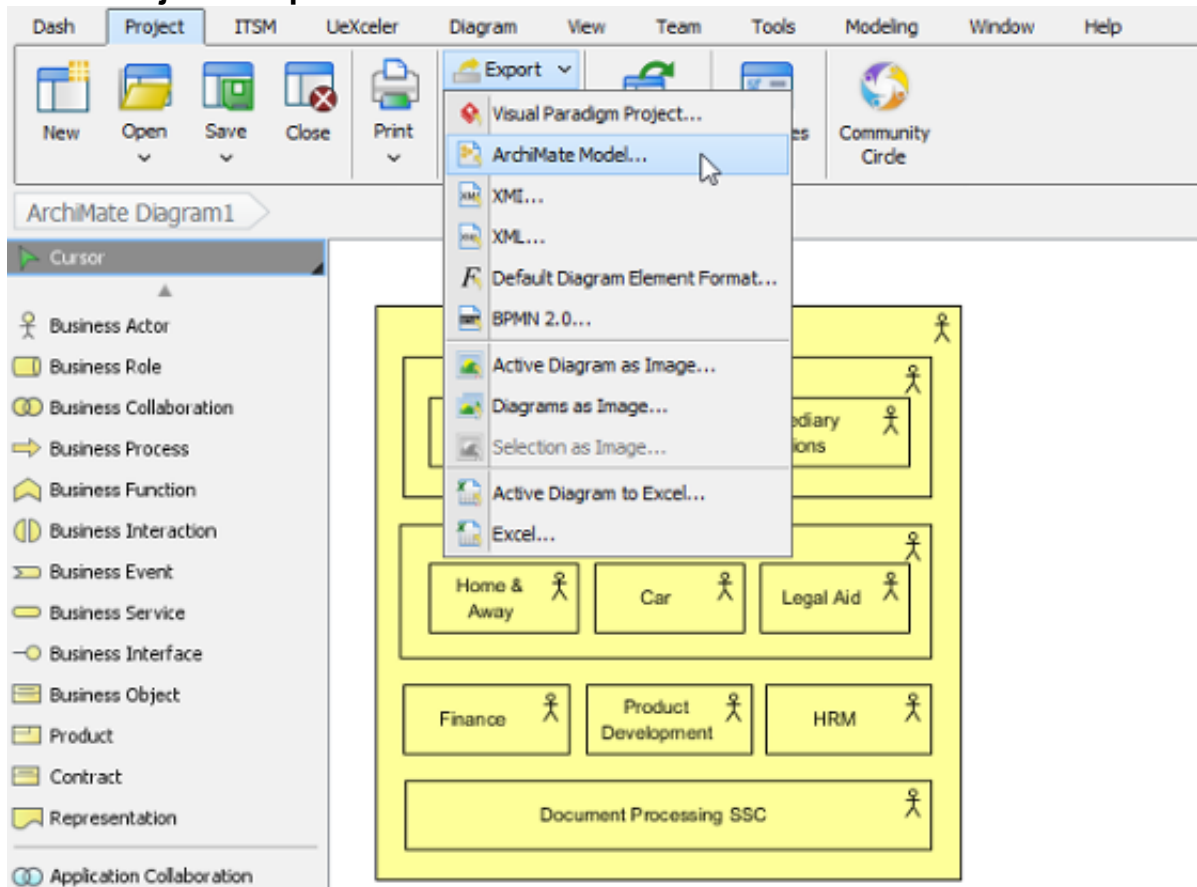


## Exporting ArchiMate Model into Visual Paradigm

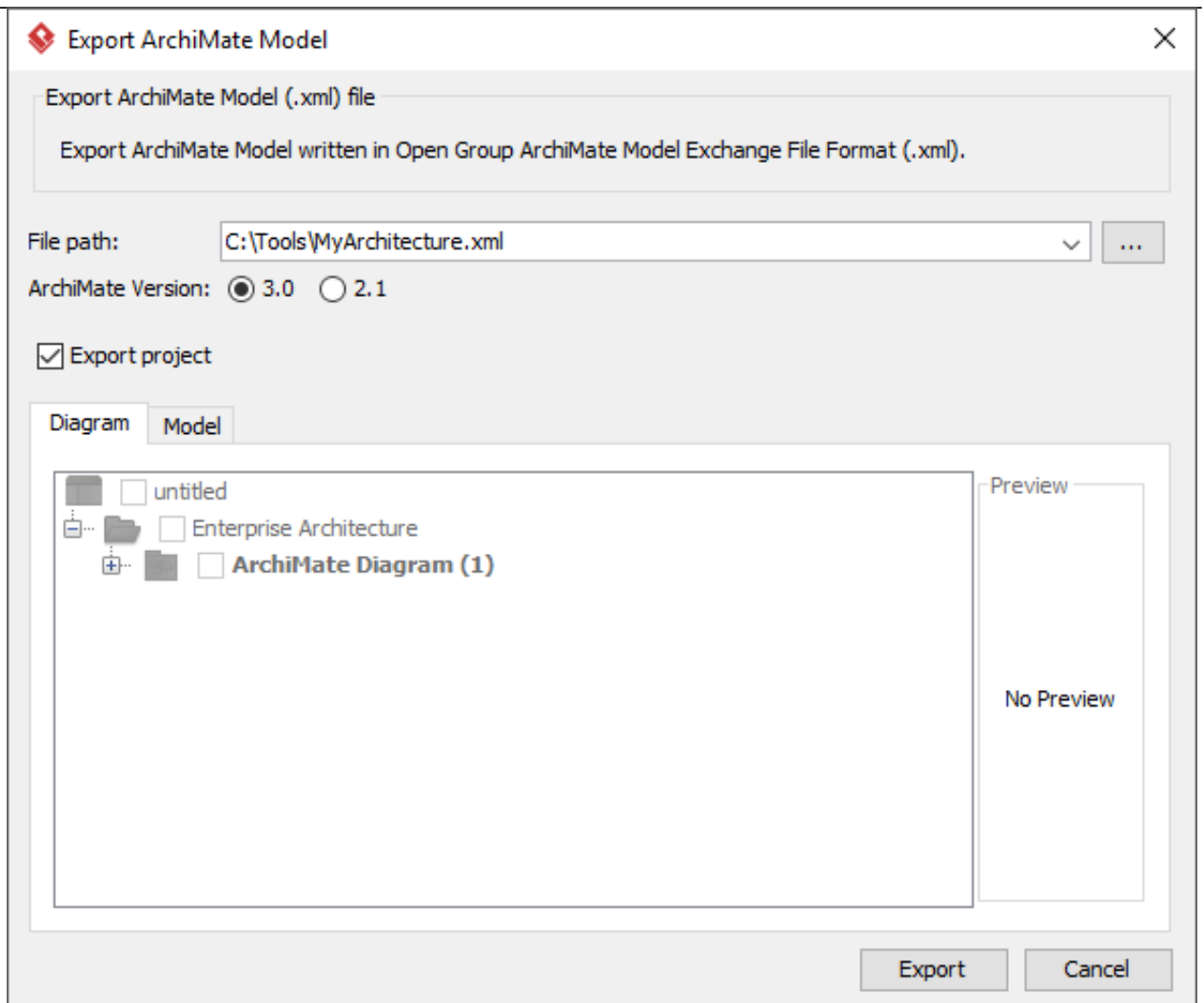
---

You can export OpenGroup ArchiMate Model Exchange File from Visual Paradigm by performing the steps below.

1. Select **Project > Export > ArchiMate Model...** from the main menu.



2. Enter the filepath of the XML to export. Select if you want to export the entire project or a specific set of ArchiMate views / elements.



3. Click **Export**.

4. You can then import the exported file into other tools that support ArchiMate Model Exchange File.

