
ArchiMate Viewpoint: Application Usage Viewpoint

In the [ArchiMate](#) language, a viewpoint is a relevant subset of ArchiMate elements and relationships, put together on a diagram in representing a particular part of an architecture. ArchiMate suggests a set of [example viewpoints](#). Each of them comprises elements from different layers. Besides, the Grouping element, Junction, and Or Junction can be used in every viewpoint. These basic viewpoints can be used as starting points for modeling efforts. But keep in mind that these example viewpoints should not constrain modeling activities. Organizations should modify the example viewpoints or even to design their own viewpoints in addressing specific stakeholder concerns. This article describes one of the many example viewpoints - The Application Usage Viewpoint.

What is an Application Usage Viewpoint?

According to [ArchiMate 3.0.1 specification](#):

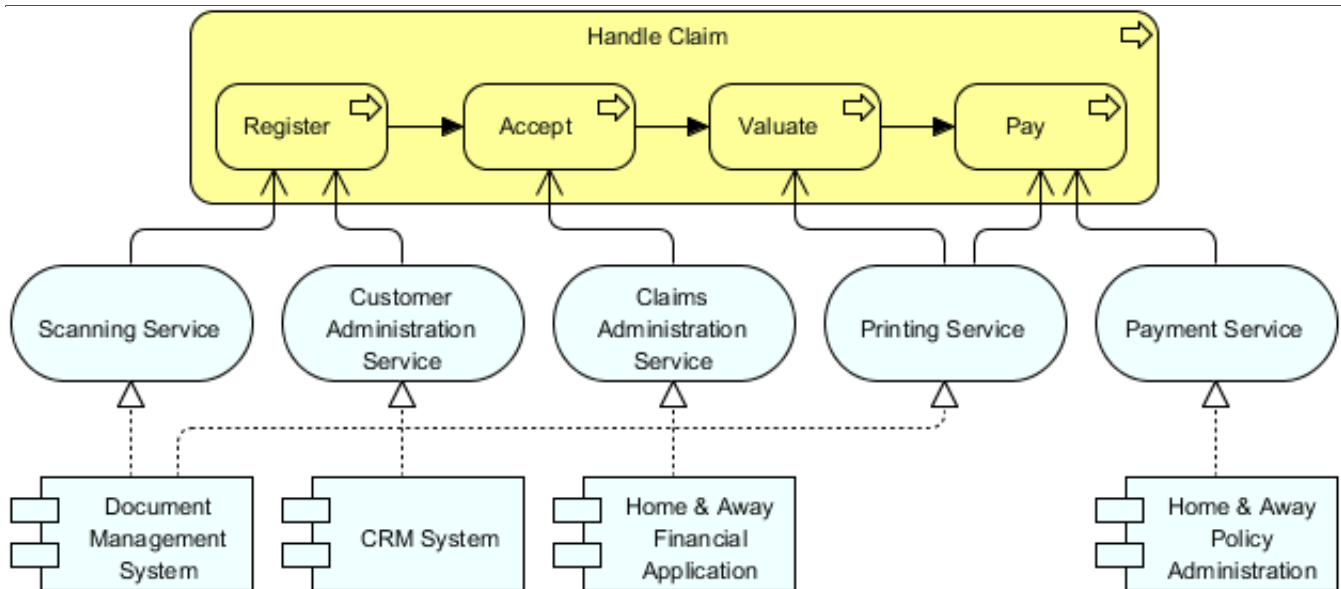
The application usage viewpoint describes how applications are used to support one or more business processes, and how they are used by other applications. It can be used in designing an application by identifying the services needed by business processes and other applications, or in designing business processes by describing the services that are available. Furthermore, since it identifies the dependencies of business processes upon applications, it may be useful to operational managers responsible for these processes.

The table below describes Application Usage Viewpoint in more detail.

Attribute	Value
Stakeholders	Enterprise, process, and application architects, operational managers
Concerns	Consistency and completeness, reduction of complexity
Purpose	Designing, deciding
Scope	Multiple layer/Multiple aspect

Application Usage Viewpoint Example

The figure below shows an ArchiMate diagram created under the Application Usage Viewpoint. By applying a viewpoint you are allowed to draw an ArchiMate diagram with a subset of ArchiMate elements and relationships, as defined under the viewpoint.

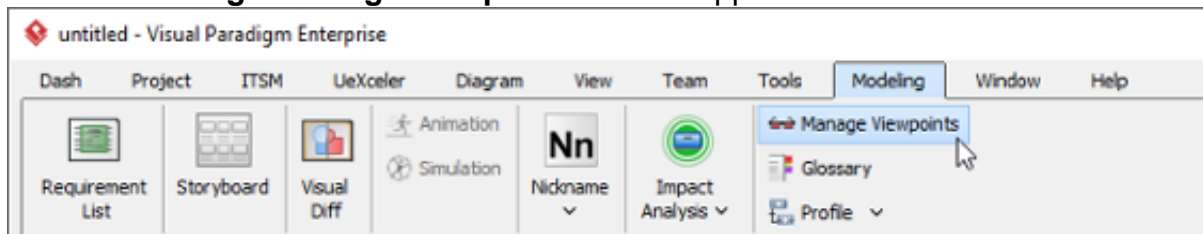


How to apply Application Usage Viewpoint?

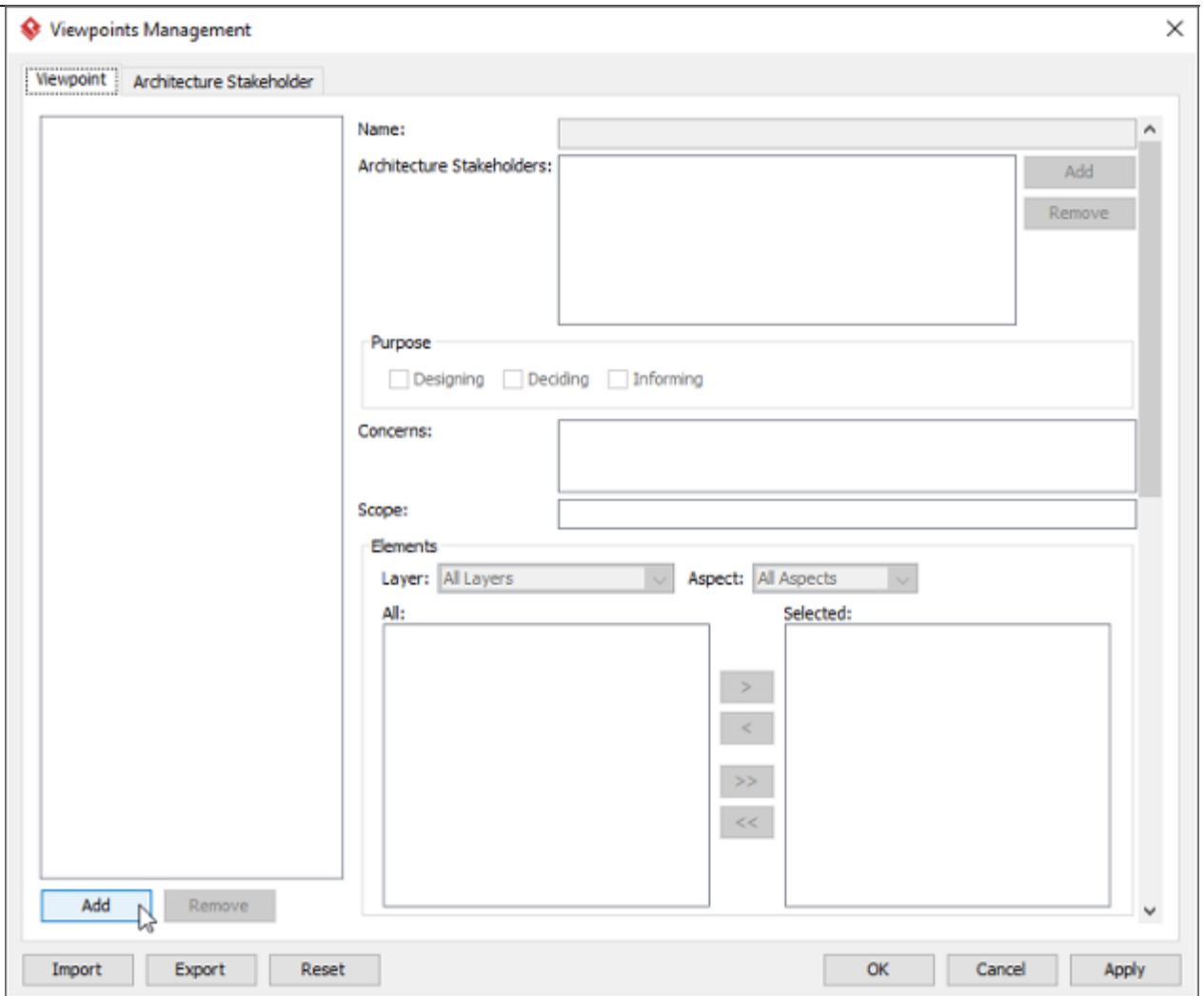
To apply Application Usage Viewpoint (or any other viewpoint) involves two main steps. The first step is to configure your project to use the viewpoint. The second step is to edit your diagram by selecting the viewpoint.

Project configuration

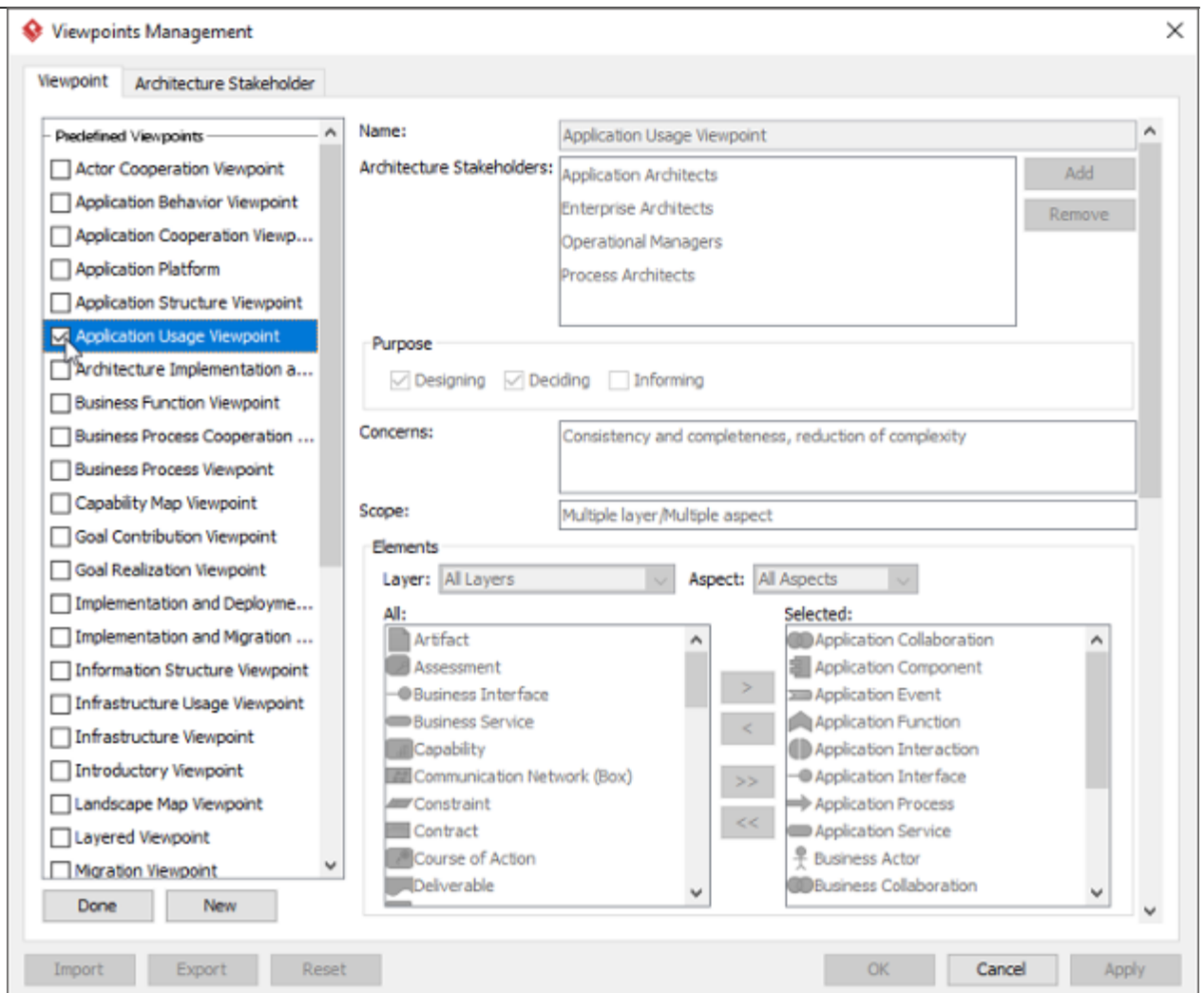
1. Select **Modeling > Manage Viewpoint** from the application toolbar.



2. This shows the **Viewpoint** tab. Click **Add** at bottom left.



3. This shows the list of example viewpoints. Select **Application Usage Viewpoint**. The stakeholder, purpose, concerns and related elements are presented on the right.

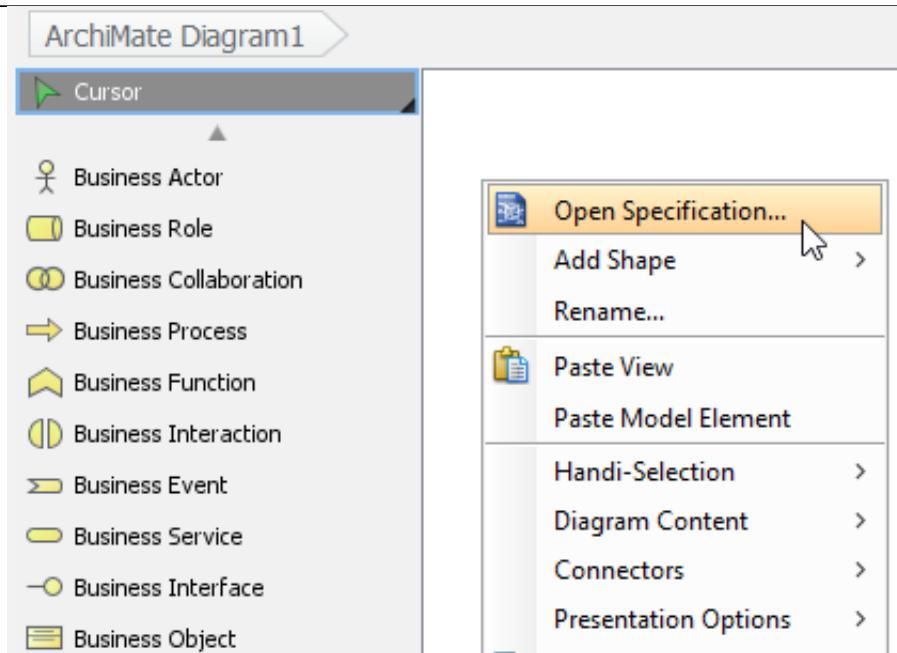


4. Click **Done**.
5. Click **OK** to confirm.

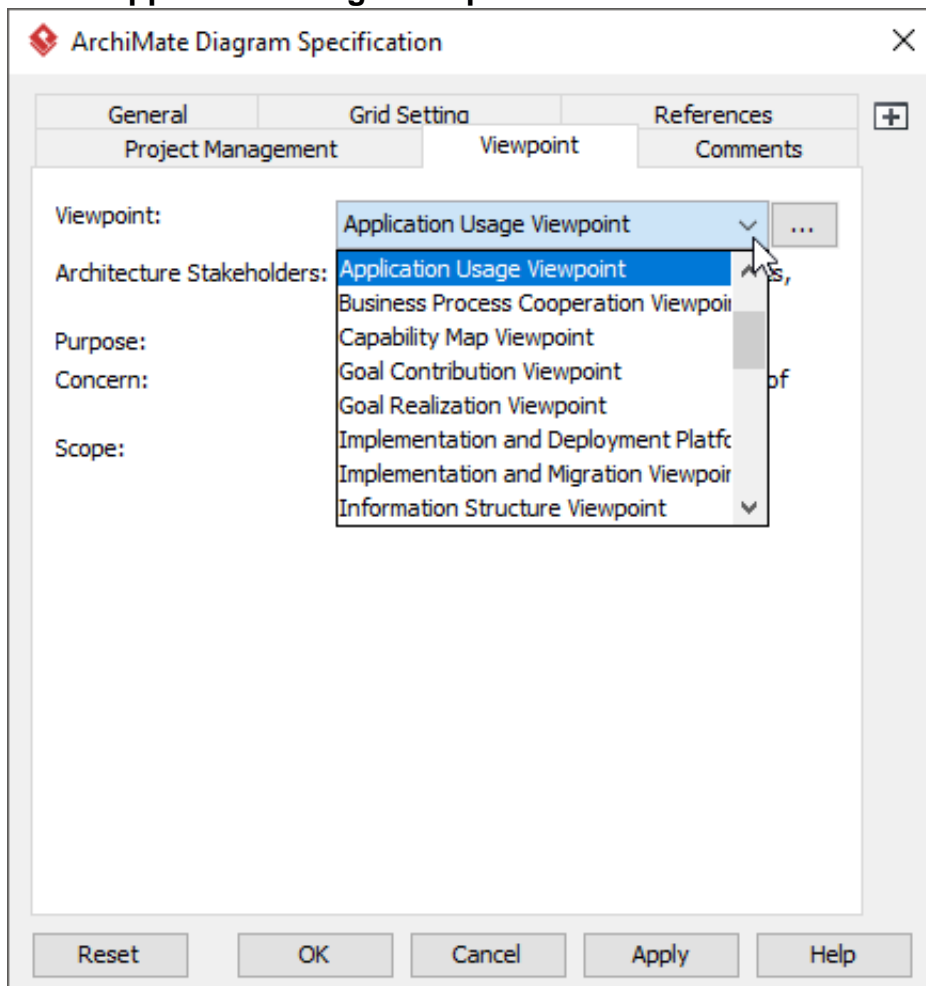
Setting a viewpoint to diagram

To apply Application Usage Viewpoint on an ArchiMate diagram:

1. Right click on the ArchiMate diagram and select **Open Specification...** from the popup menu.



2. Open the **Viewpoint** tab.
3. Select **Application Usage Viewpoint**.



4. Click **OK** to return to the diagram. From now on, you can select the subset of ArchiMate elements and relationships defined under the Application Usage Viewpoint.

- Cursor
- Business Actor
 - Business Role
 - Business Collaboration
 - Business Process
 - Business Function
 - Business Interaction
 - Business Event
 - Business Object
-
- Application Collaboration
 - Application Component
 - Application Service
 - Application Function
 - Application Interaction
 - Application Interface

