

---

# ArchiMate Viewpoint: Goal Realization Viewpoint

In the [ArchiMate](#) language, a viewpoint is a relevant subset of ArchiMate elements and relationships, put together on a diagram in representing a particular part of an architecture. ArchiMate suggests a set of [example viewpoints](#). Each of them comprises elements from different layers. Besides, the Grouping element, Junction, and Or Junction can be used in every viewpoint. These basic viewpoints can be used as starting points for modeling efforts. But keep in mind that these example viewpoints should not constrain modeling activities. Organizations should modify the example viewpoints or even to design their own viewpoints in addressing specific stakeholder concerns. This article describes one of the many example viewpoints - The Goal Realization Viewpoint.

## What is an Goal Realization Viewpoint?

According to [ArchiMate 3.0.1 specification](#):

The goal realization viewpoint allows a designer to model the refinement of (high-level) goals into more tangible goals, and the refinement of tangible goals into requirements or constraints that describe the properties that are needed to realize the goals. The refinement of goals into sub-goals is modeled using the aggregation relationship. The refinement of goals into requirements is modeled using the realization relationship.

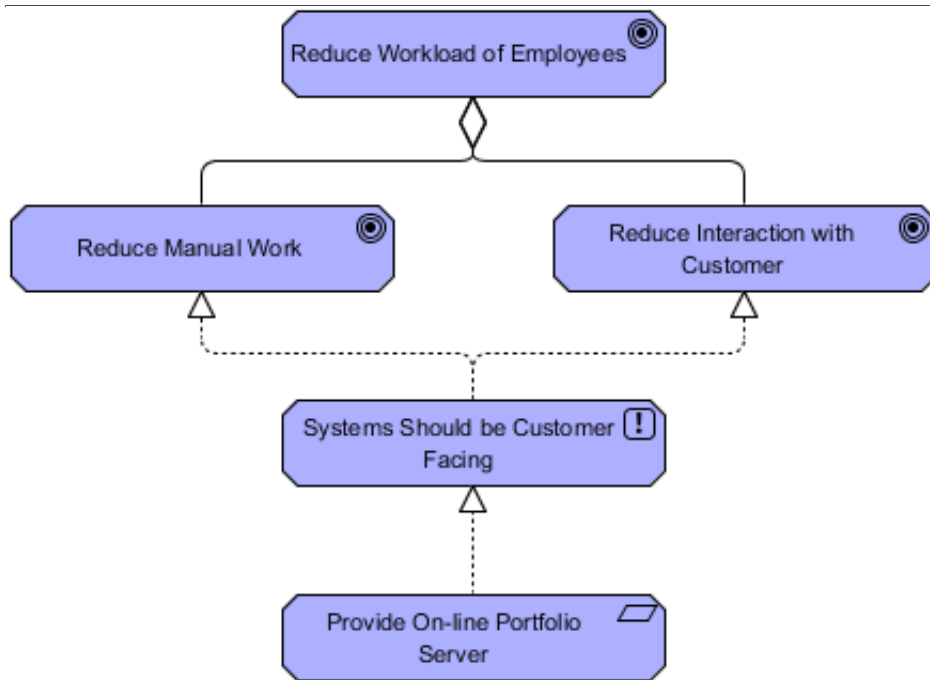
In addition, the principles may be modeled that guide the refinement of goals into requirements.

The table below describes Goal Realization Viewpoint in more detail.

Attribute	Value
Stakeholders	Stakeholders, business managers, enterprise and ICT architects, business analysts, requirements managers
Concerns	Architecture mission, strategy and tactics, motivation
Purpose	Designing, deciding
Scope	Motivation

## Goal Realization Viewpoint Example

The figure below shows an ArchiMate diagram created under the Goal Realization Viewpoint. By applying a viewpoint you are allowed to draw an ArchiMate diagram with a subset of ArchiMate elements and relationships, as defined under the viewpoint.

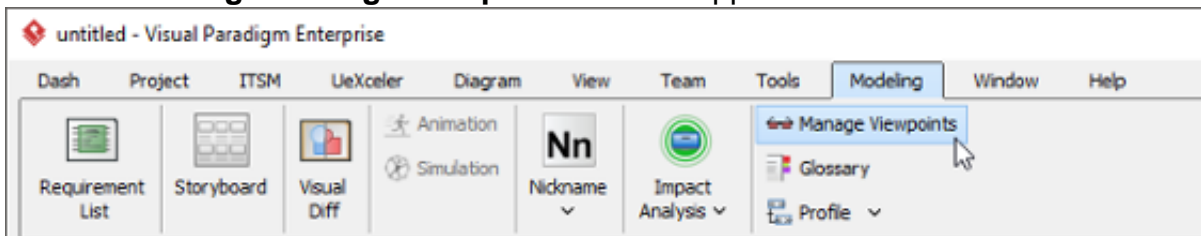


## How to apply Goal Realization Viewpoint?

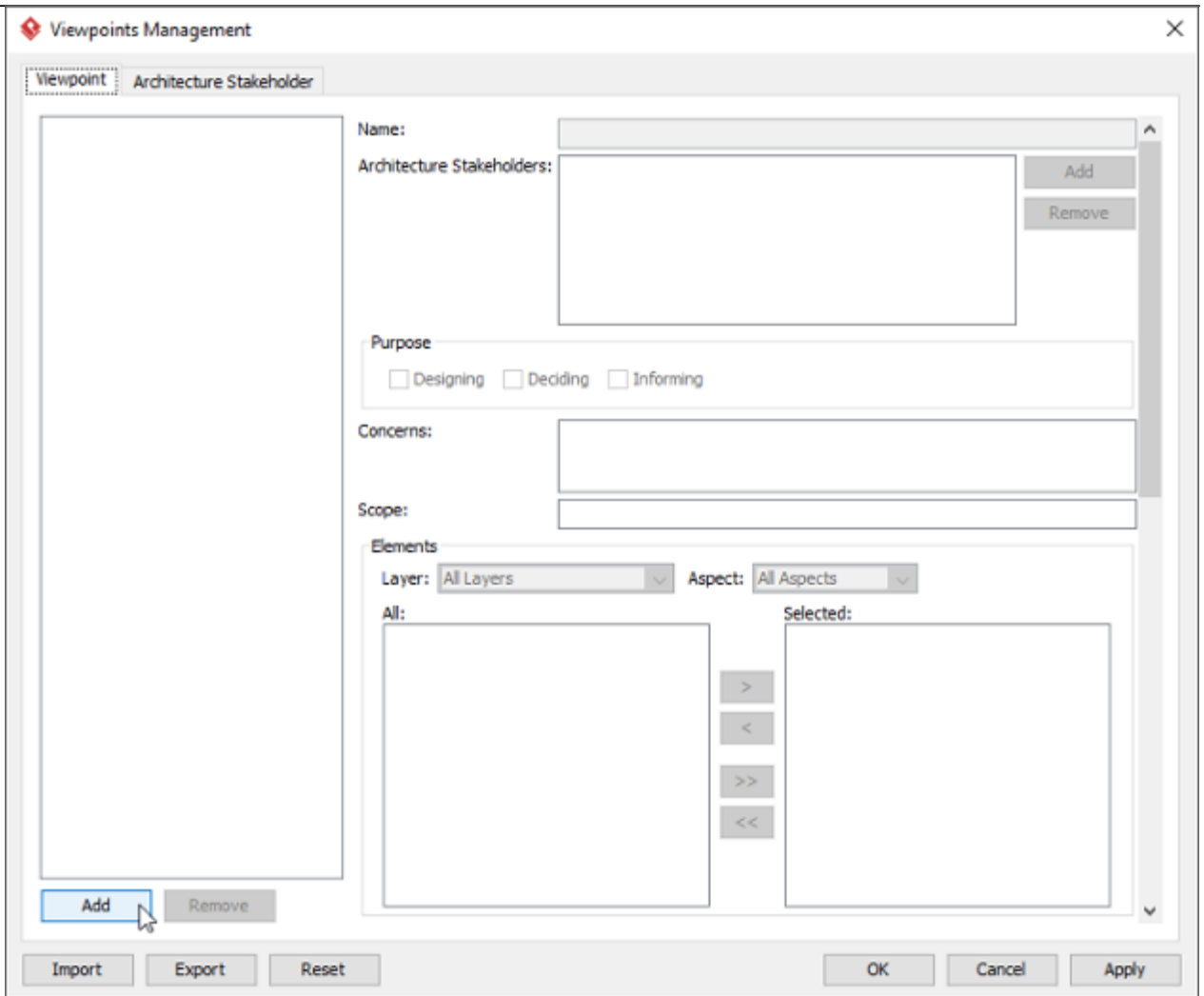
To apply Goal Realization Viewpoint (or any other viewpoint) involves two main steps. The first step is to configure your project to use the viewpoint. The second step is to edit your diagram by selecting the viewpoint.

### Project configuration

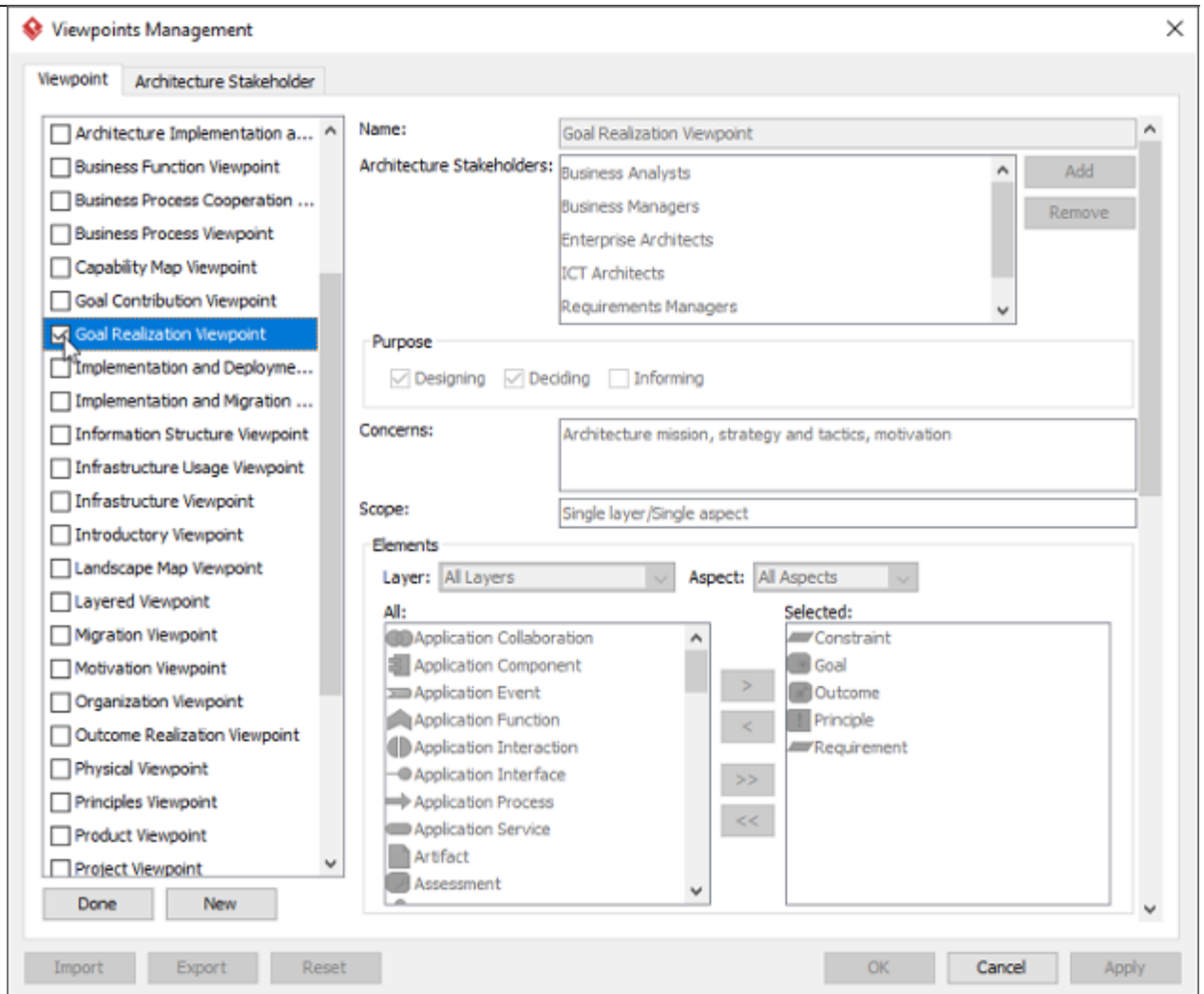
1. Select **Modeling > Manage Viewpoint** from the application toolbar.



2. This shows the **Viewpoint** tab. Click **Add** at bottom left.



3. This shows the list of example viewpoints. Select **Goal Realization Viewpoint**. The stakeholder, purpose, concerns and related elements are presented on the right.

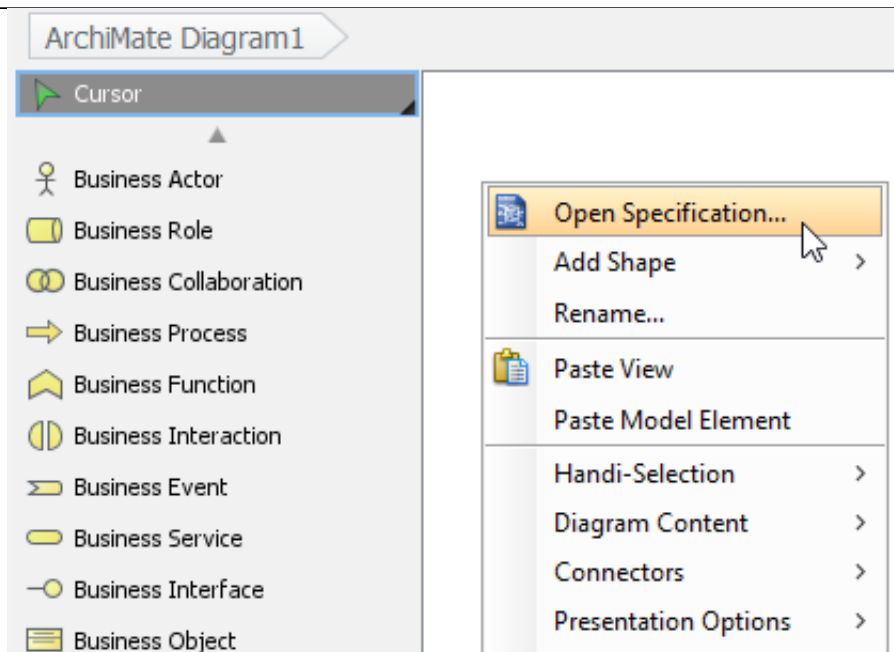


4. Click **Done**.
5. Click **OK** to confirm.

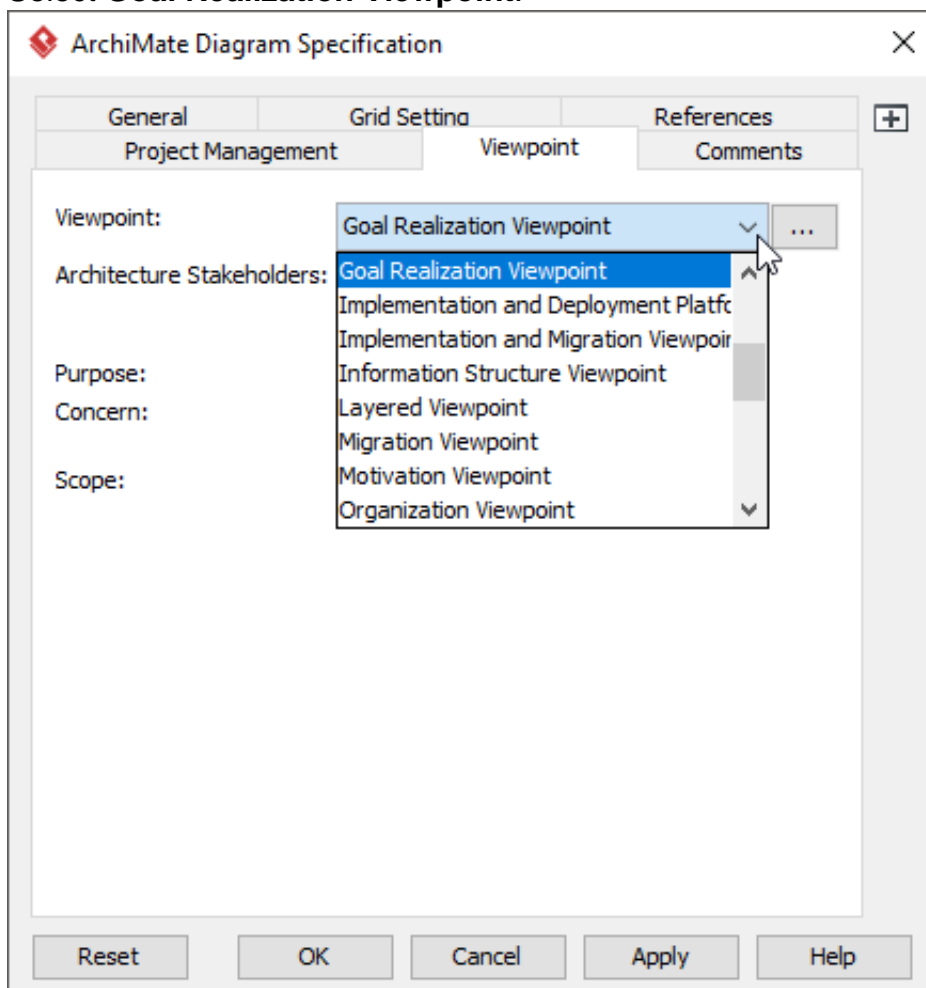
## Setting a viewpoint to diagram

To apply Goal Realization Viewpoint on an ArchiMate diagram:

1. Right click on the ArchiMate diagram and select **Open Specification...** from the popup menu.



2. Open the **Viewpoint** tab.
3. Select **Goal Realization Viewpoint**.



4. Click **OK** to return to the diagram. From now on, you can select the subset of ArchiMate elements and relationships defined under the Goal Realization Viewpoint.

- Cursor
- Assignment
- Realization
- Triggering
- Serving
- Association
- Provided
- Read Access
- Aggregation
- Composition
- Specialization
- Flow
- Location
- Grouping
- And Junction

