
ArchiMate Viewpoint: Implementation and Migration Viewpoint

In the [ArchiMate](#) language, a viewpoint is a relevant subset of ArchiMate elements and relationships, put together on a diagram in representing a particular part of an architecture. ArchiMate suggests a set of [example viewpoints](#). Each of them comprises elements from different layers. Besides, the Grouping element, Junction, and Or Junction can be used in every viewpoint. These basic viewpoints can be used as starting points for modeling efforts. But keep in mind that these example viewpoints should not constrain modeling activities. Organizations should modify the example viewpoints or even to design their own viewpoints in addressing specific stakeholder concerns. This article describes one of the many example viewpoints - The Implementation and Migration Viewpoint.

What is an Implementation and Migration Viewpoint?

According to [ArchiMate 3.0.1 specification](#):

The implementation and migration viewpoint is used to relate programs and projects to the parts of the architecture that they implement. This view allows modeling of the scope of programs, projects, project activities in terms of the plateaus that are realized or the individual architecture elements that are affected. In addition, the way the elements are affected may be indicated by annotating the relationships.

Furthermore, this viewpoint can be used in combination with the programs and projects viewpoint to support portfolio management:

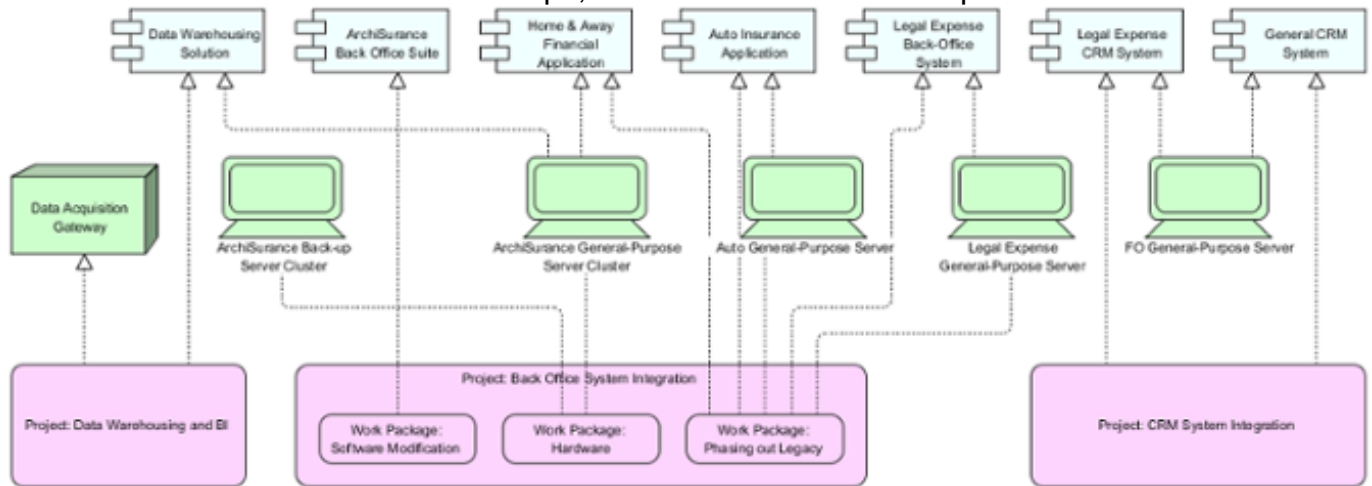
- The programs and projects viewpoint is suited to relate business goals to programs and projects. For example, this makes it possible to analyze at a high level whether all business goals are covered sufficiently by the current portfolio(s).
- The implementation and migration viewpoint is suited to relate business goals (and requirements) via programs and projects to (parts of) the architecture. For example, this makes it possible to analyze potential overlap between project activities or to analyze the consistency between project dependencies and dependencies among plateaus or architecture elements.

The table below describes Implementation and Migration Viewpoint in more detail.

Attribute	Value
Stakeholders	(operational) managers, enterprise and ICT architects, employees, shareholders
Concerns	Architecture vision and policies, motivation
Purpose	Deciding, informing
Scope	Multiple layer/Multiple aspect

Implementation and Migration Viewpoint Example

The figure below shows an ArchiMate diagram created under the Implementation and Migration Viewpoint. By applying a viewpoint you are allowed to draw an ArchiMate diagram with a subset of ArchiMate elements and relationships, as defined under the viewpoint.

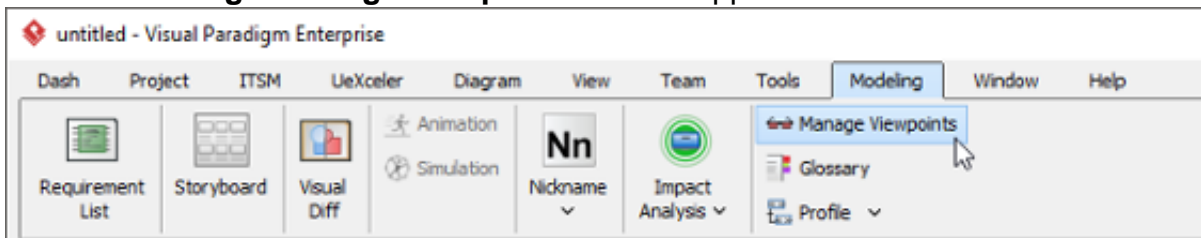


How to apply Implementation and Migration Viewpoint?

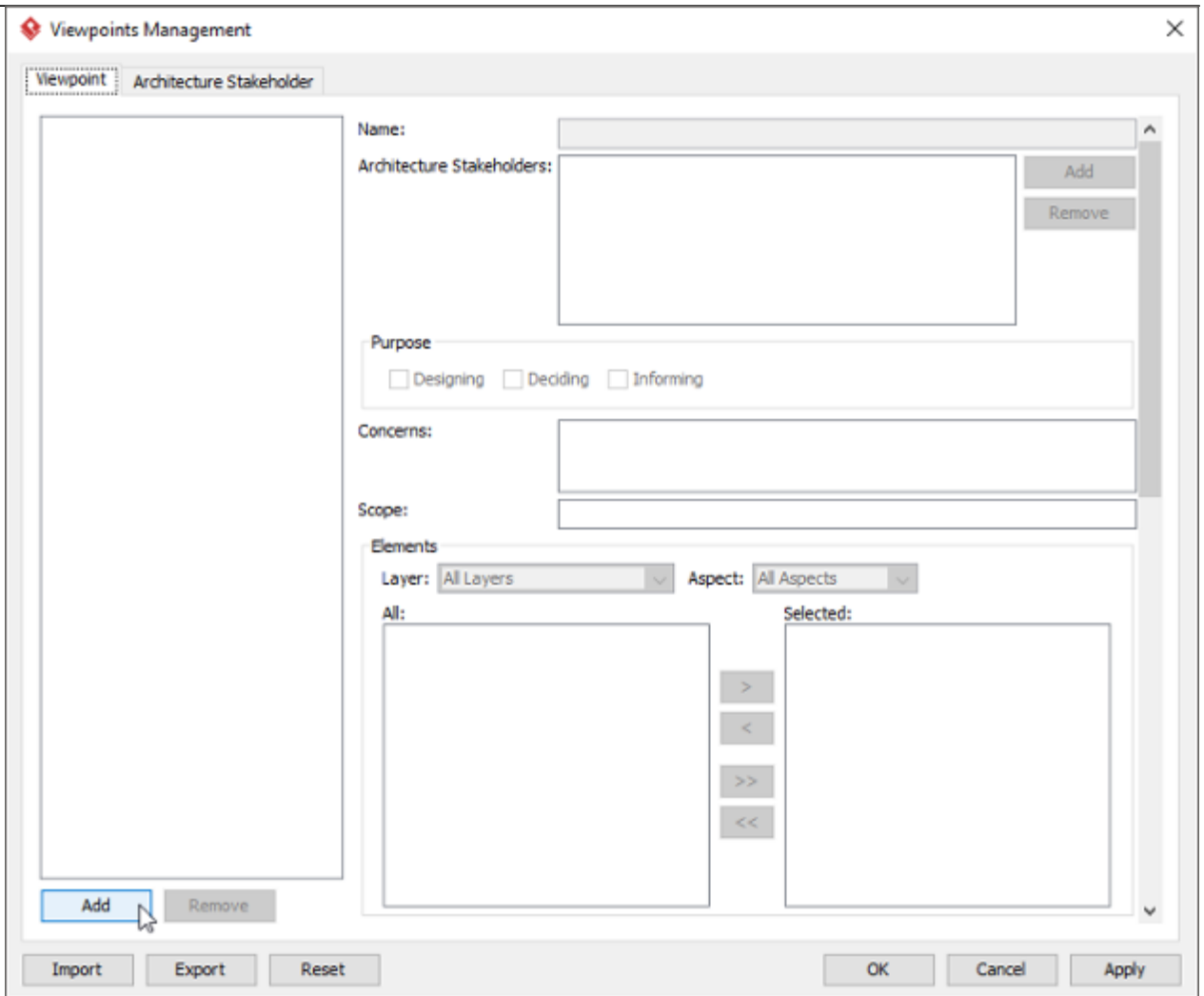
To apply Implementation and Migration Viewpoint (or any other viewpoint) involves two main steps. The first step is to configure your project to use the viewpoint. The second step is to edit your diagram by selecting the viewpoint.

Project configuration

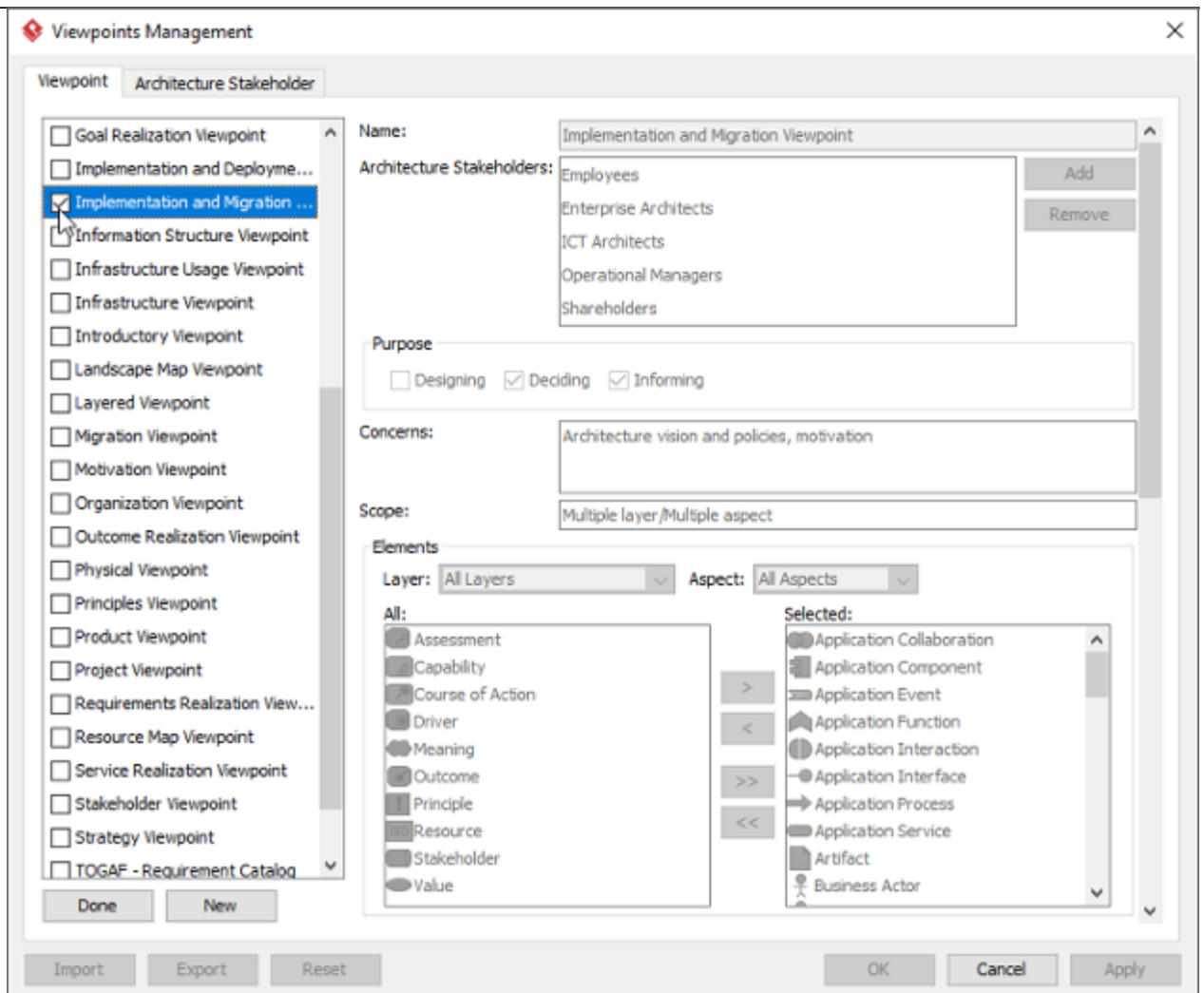
1. Select **Modeling > Manage Viewpoint** from the application toolbar.



2. This shows the **Viewpoint** tab. Click **Add** at bottom left.



3. This shows the list of example viewpoints. Select **Implementation and Migration Viewpoint**. The stakeholder, purpose, concerns and related elements are presented on the right.

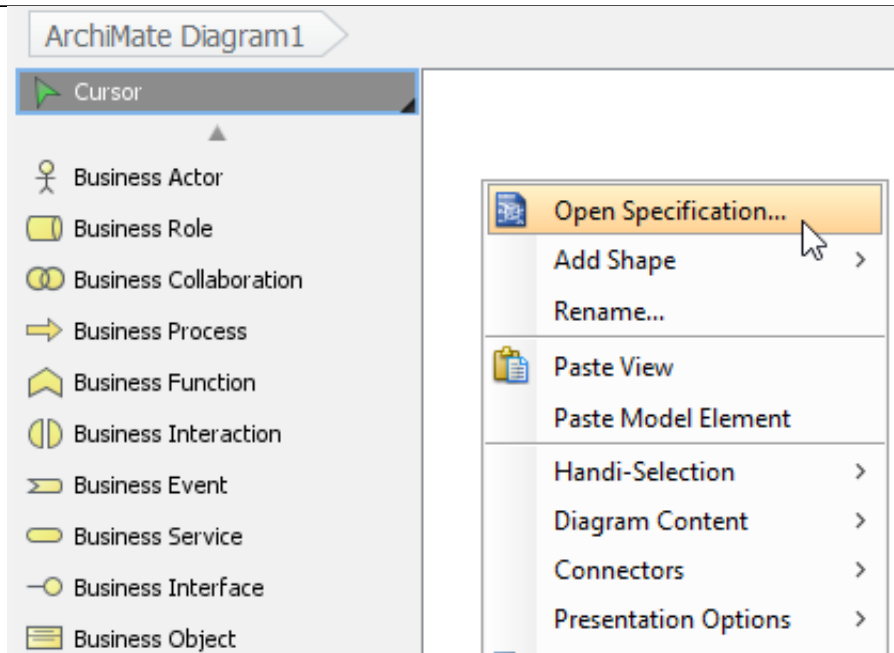


4. Click **Done**.
5. Click **OK** to confirm.

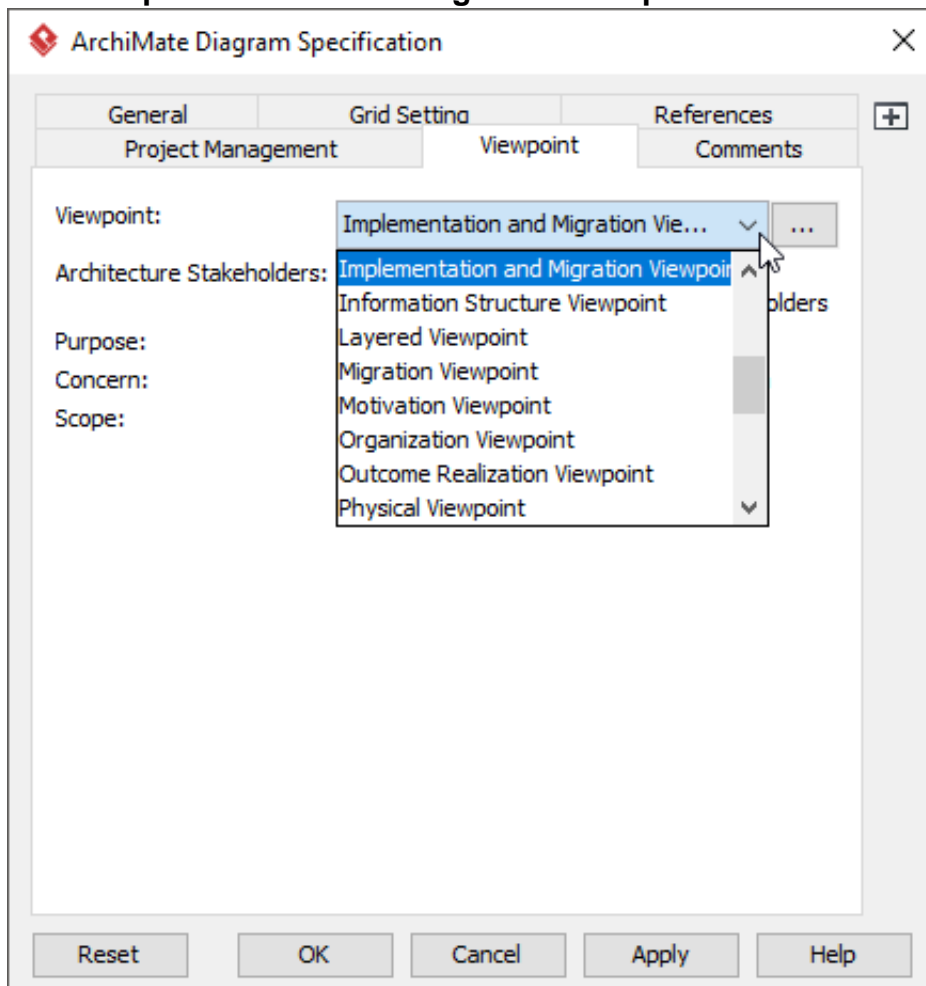
Setting a viewpoint to diagram

To apply Implementation and Migration Viewpoint on an ArchiMate diagram:

1. Right click on the ArchiMate diagram and select **Open Specification...** from the popup menu.



2. Open the **Viewpoint** tab.
3. Select **Implementation and Migration Viewpoint**.



4. Click **OK** to return to the diagram. From now on, you can select the subset of ArchiMate elements and relationships defined under the Implementation and Migration Viewpoint.

Cursor

- Business Actor
- Business Role
- Business Collaboration
- Business Process
- Business Function
- Business Interaction
- Business Event
- Business Service
- Business Interface
- Business Object
- Product
- Contract
- Representation

- Application Collaboration

