

---

# ArchiMate Viewpoint: Information Structure Viewpoint

In the [ArchiMate](#) language, a viewpoint is a relevant subset of ArchiMate elements and relationships, put together on a diagram in representing a particular part of an architecture. ArchiMate suggests a set of [example viewpoints](#). Each of them comprises elements from different layers. Besides, the Grouping element, Junction, and Or Junction can be used in every viewpoint. These basic viewpoints can be used as starting points for modeling efforts. But keep in mind that these example viewpoints should not constrain modeling activities. Organizations should modify the example viewpoints or even to design their own viewpoints in addressing specific stakeholder concerns. This article describes one of the many example viewpoints - The Information Structure Viewpoint.

## What is an Information Structure Viewpoint?

According to [ArchiMate 3.0.1 specification](#):

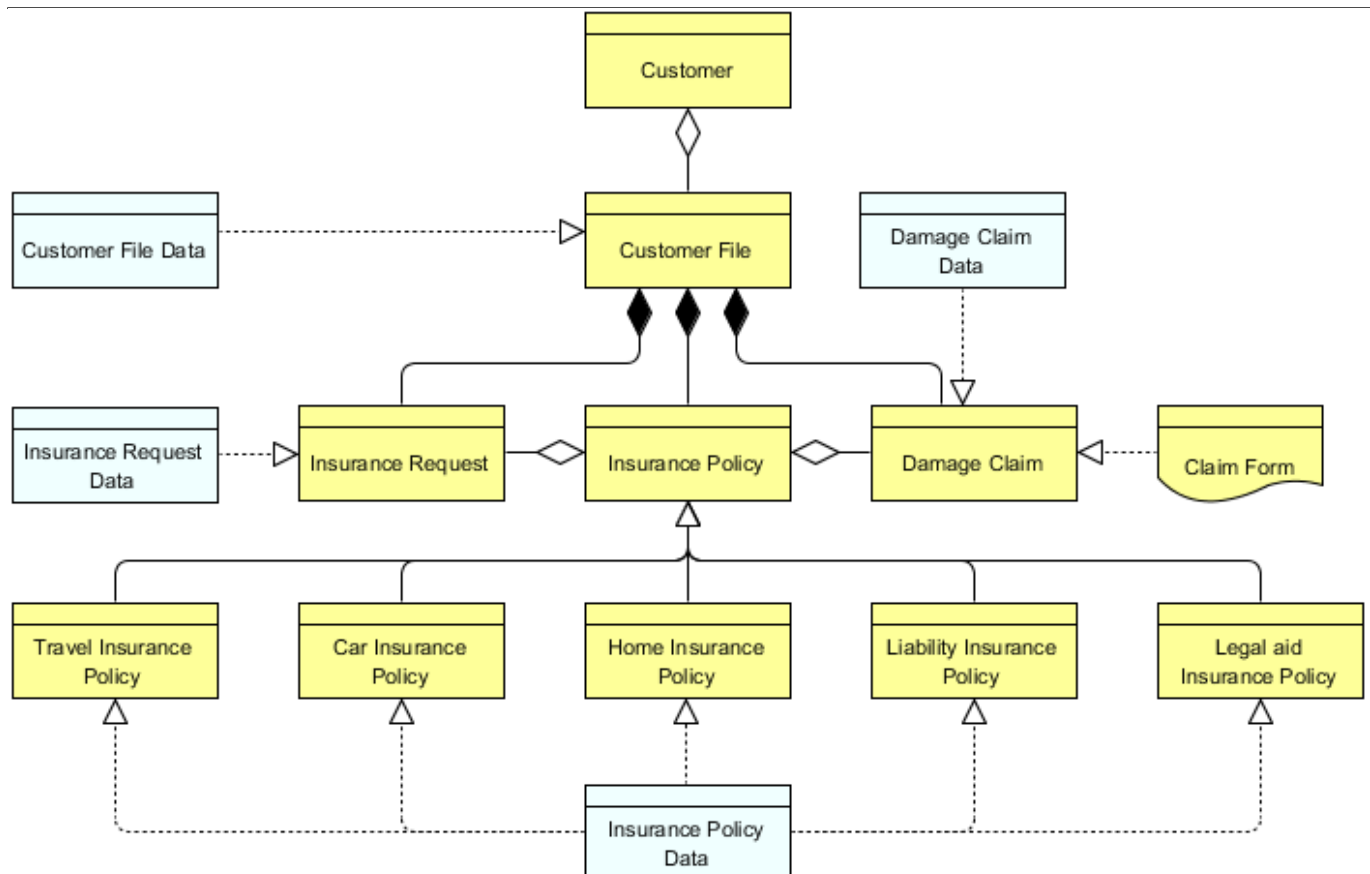
The information structure viewpoint is comparable to the traditional information models created in the development of almost any information system. It shows the structure of the information used in the enterprise or in a specific business process or application, in terms of data types or (object-oriented) class structures. Furthermore, it may show how the information at the business level is represented at the application level in the form of the data structures used there, and how these are then mapped onto the underlying technology infrastructure; e.g., by means of a database schema.

The table below describes Information Structure Viewpoint in more detail.

Attribute	Value
Stakeholders	Domain and information architects
Concerns	Structure and dependencies of the used data and information, consistency and completeness
Purpose	Designing
Scope	Multiple layer/Single aspect

## Information Structure Viewpoint Example

The figure below shows an ArchiMate diagram created under the Information Structure Viewpoint. By applying a viewpoint you are allowed to draw an ArchiMate diagram with a subset of ArchiMate elements and relationships, as defined under the viewpoint.

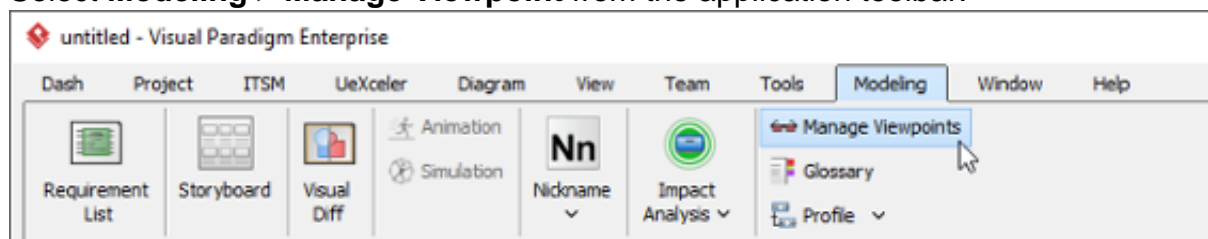


## How to apply Information Structure Viewpoint?

To apply Information Structure Viewpoint (or any other viewpoint) involves two main steps. The first step is to configure your project to use the viewpoint. The second step is to edit your diagram by selecting the viewpoint.

### Project configuration

1. Select **Modeling > Manage Viewpoint** from the application toolbar.



2. This shows the **Viewpoint** tab. Click **Add** at bottom left.

Viewpoints Management

Viewpoint Architecture Stakeholder

Name:

Architecture Stakeholders:

Add

Remove

Purpose

☐ Designing ☐ Deciding ☐ Informing

Concerns:

Scope:

Elements

Layer: All Layers Aspect: All Aspects

All:

Selected:

>

<

>>

<<

Add

Remove

Import

Export

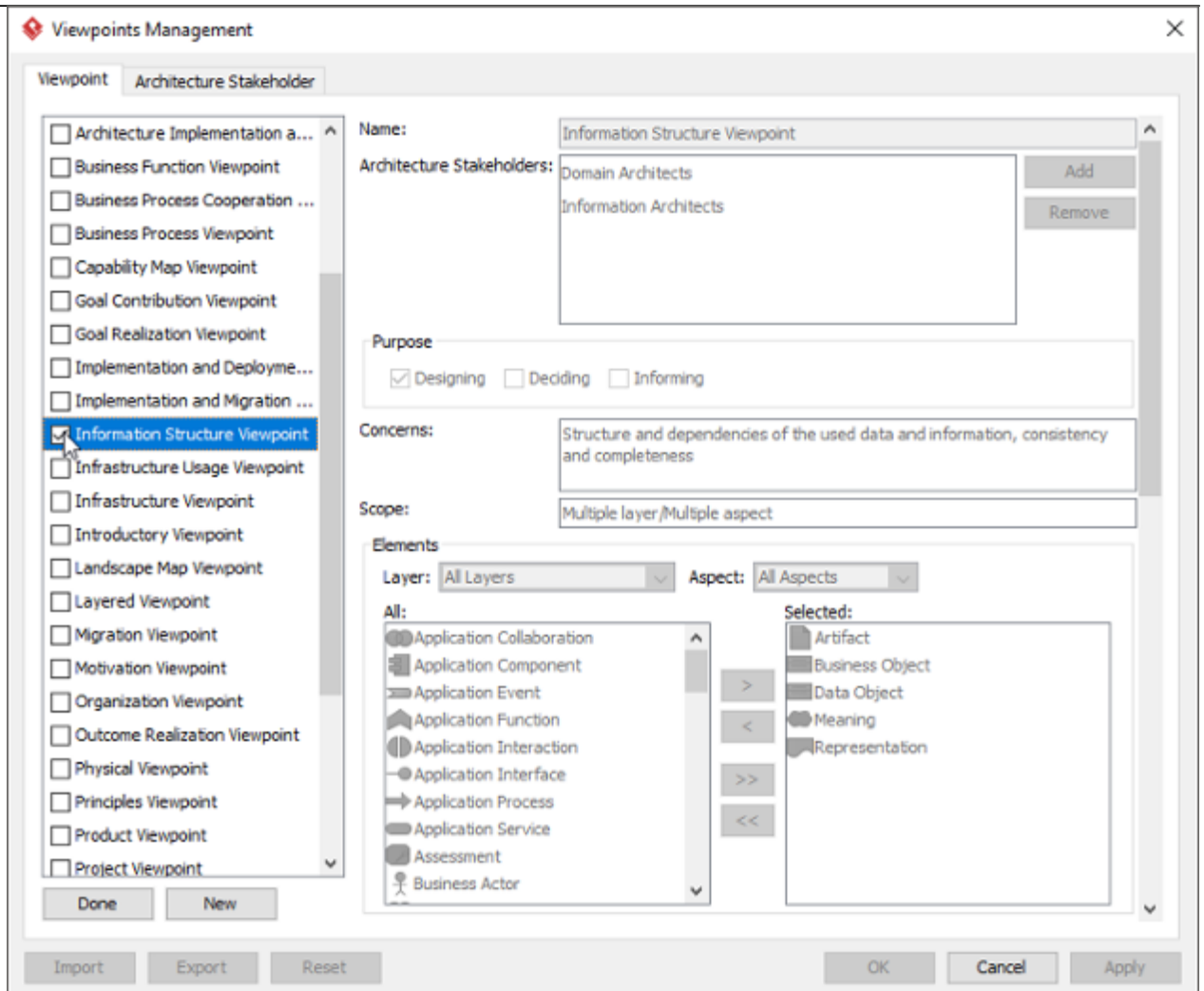
Reset

OK

Cancel

Apply

3. This shows the list of example viewpoints. Select **Information Structure Viewpoint**. The stakeholder, purpose, concerns and related elements are presented on the right.

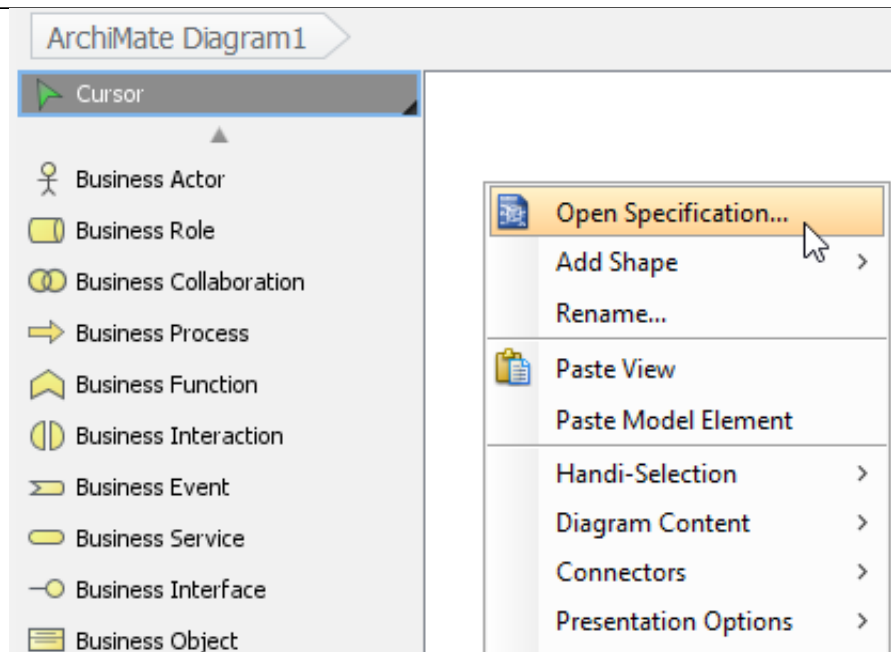


4. Click **Done**.
5. Click **OK** to confirm.

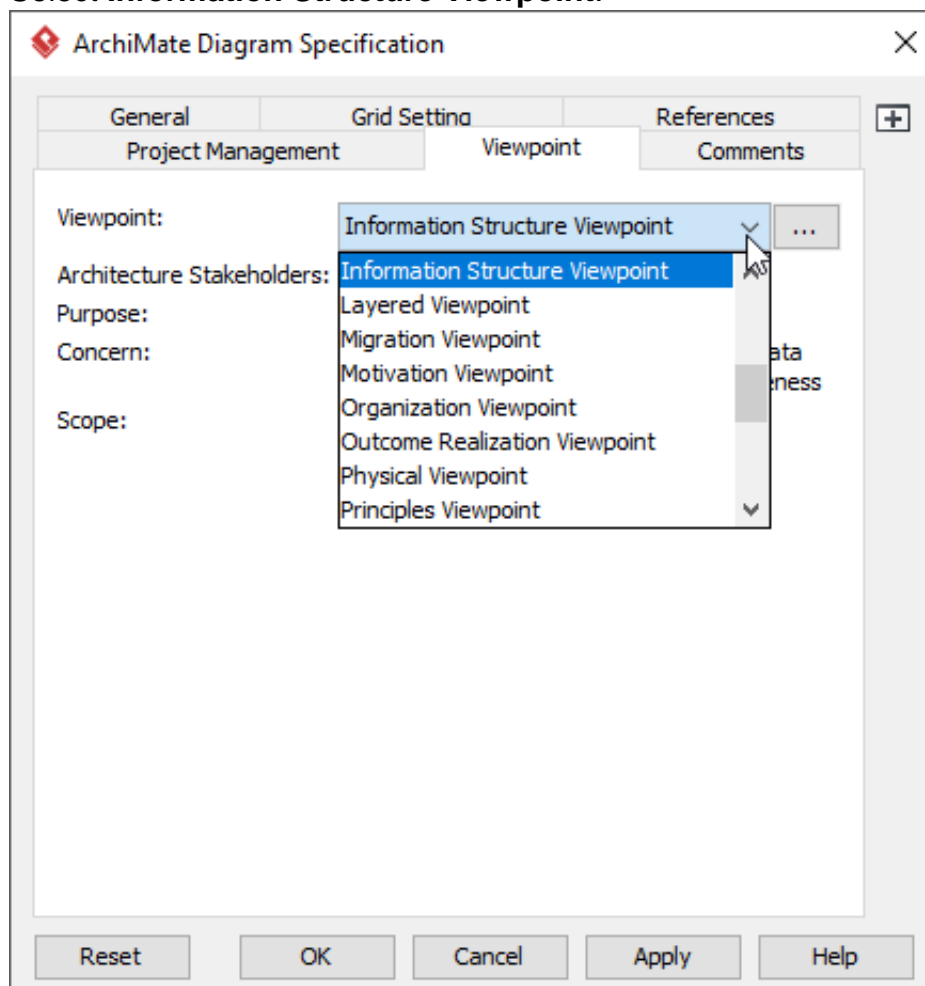
## Setting a viewpoint to diagram

To apply Information Structure Viewpoint on an ArchiMate diagram:

1. Right click on the ArchiMate diagram and select **Open Specification...** from the popup menu.



2. Open the **Viewpoint** tab.
3. Select **Information Structure Viewpoint**.



4. Click **OK** to return to the diagram. From now on, you can select the subset of ArchiMate elements and relationships defined under the Information Structure Viewpoint.

