

---

# ArchiMate Viewpoint: Requirements Realization Viewpoint

In the [ArchiMate](#) language, a viewpoint is a relevant subset of ArchiMate elements and relationships, put together on a diagram in representing a particular part of an architecture. ArchiMate suggests a set of [example viewpoints](#). Each of them comprises elements from different layers. Besides, the Grouping element, Junction, and Or Junction can be used in every viewpoint. These basic viewpoints can be used as starting points for modeling efforts. But keep in mind that these example viewpoints should not constrain modeling activities. Organizations should modify the example viewpoints or even to design their own viewpoints in addressing specific stakeholder concerns. This article describes one of the many example viewpoints - The Requirements Realization Viewpoint.

## What is an Requirements Realization Viewpoint?

According to [ArchiMate 3.0.1 specification](#):

The requirements realization viewpoint allows the designer to model the realization of requirements by the core elements, such as business actors, business services, business processes, application services, application components, etc. Typically, the requirements result from the goal refinement viewpoint.

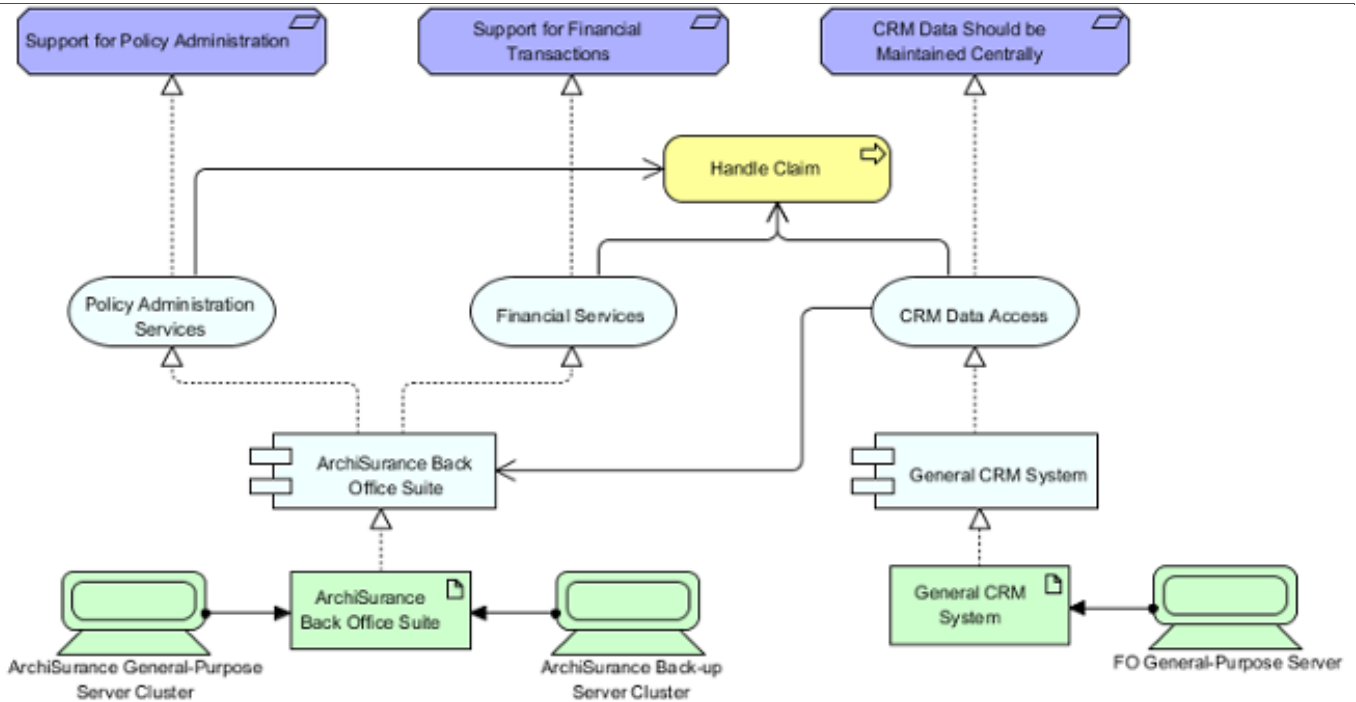
In addition, this viewpoint can be used to refine requirements into more detailed requirements. The aggregation relationship is used for this purpose.

The table below describes Requirements Realization Viewpoint in more detail.

Attribute	Value
Stakeholders	Enterprise and ICT architects, business analysts, requirements managers
Concerns	Architecture strategy and tactics, motivation
Purpose	Designing, deciding, informing
Scope	Motivation

## Requirements Realization Viewpoint Example

The figure below shows an ArchiMate diagram created under the Requirements Realization Viewpoint. By applying a viewpoint you are allowed to draw an ArchiMate diagram with a subset of ArchiMate elements and relationships, as defined under the viewpoint.

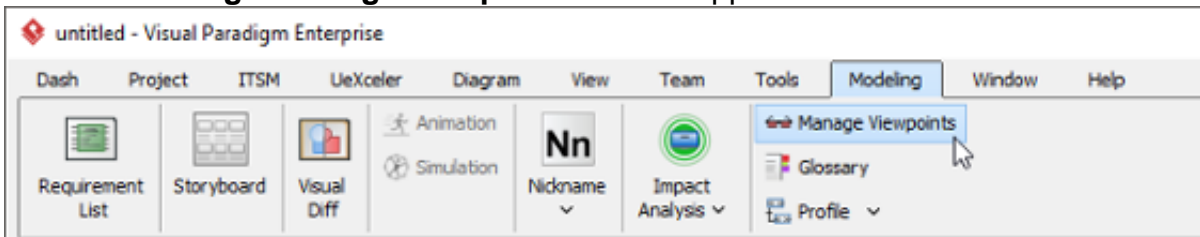


## How to apply Requirements Realization Viewpoint?

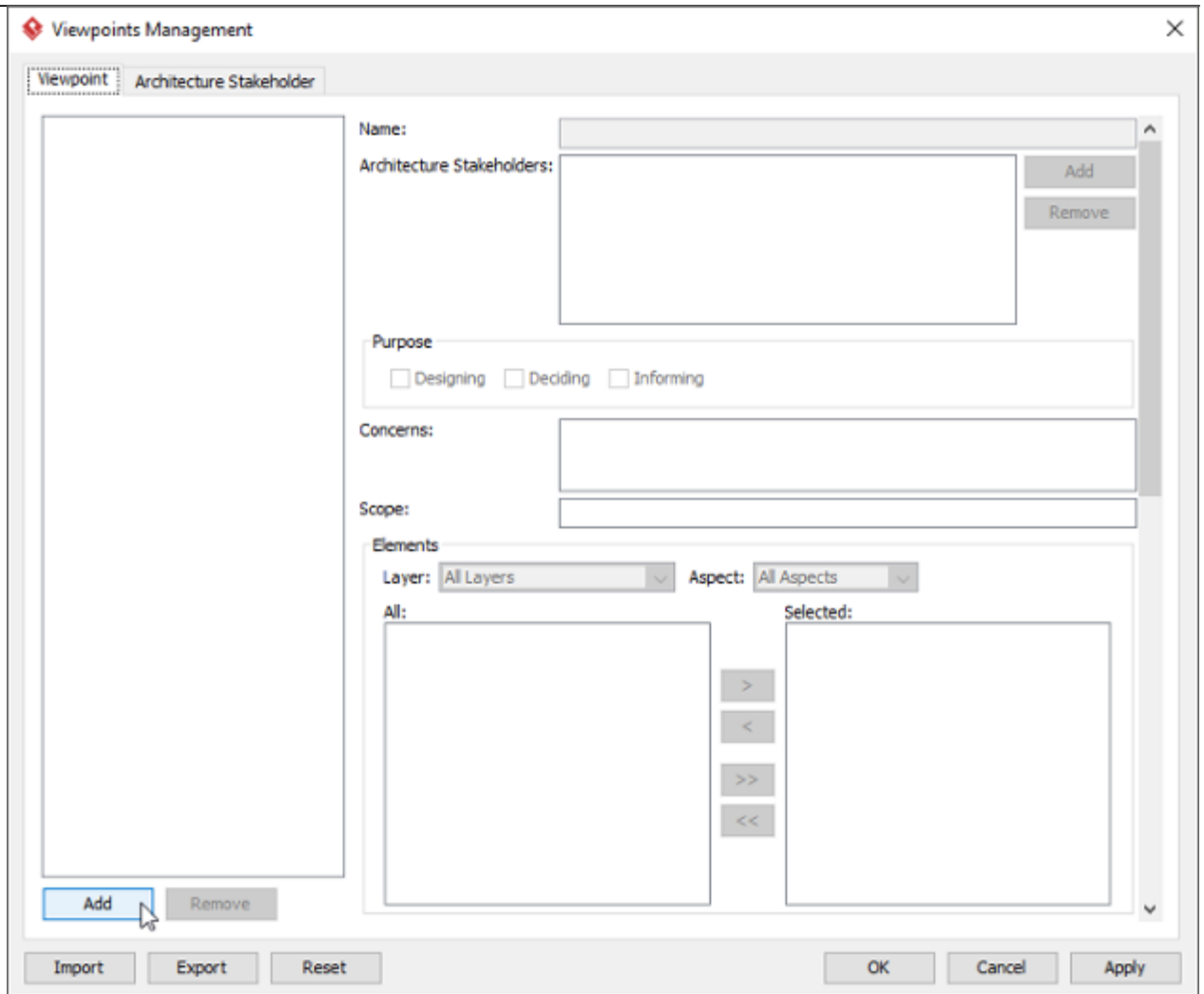
To apply Requirements Realization Viewpoint (or any other viewpoint) involves two main steps. The first step is to configure your project to use the viewpoint. The second step is to edit your diagram by selecting the viewpoint.

### Project configuration

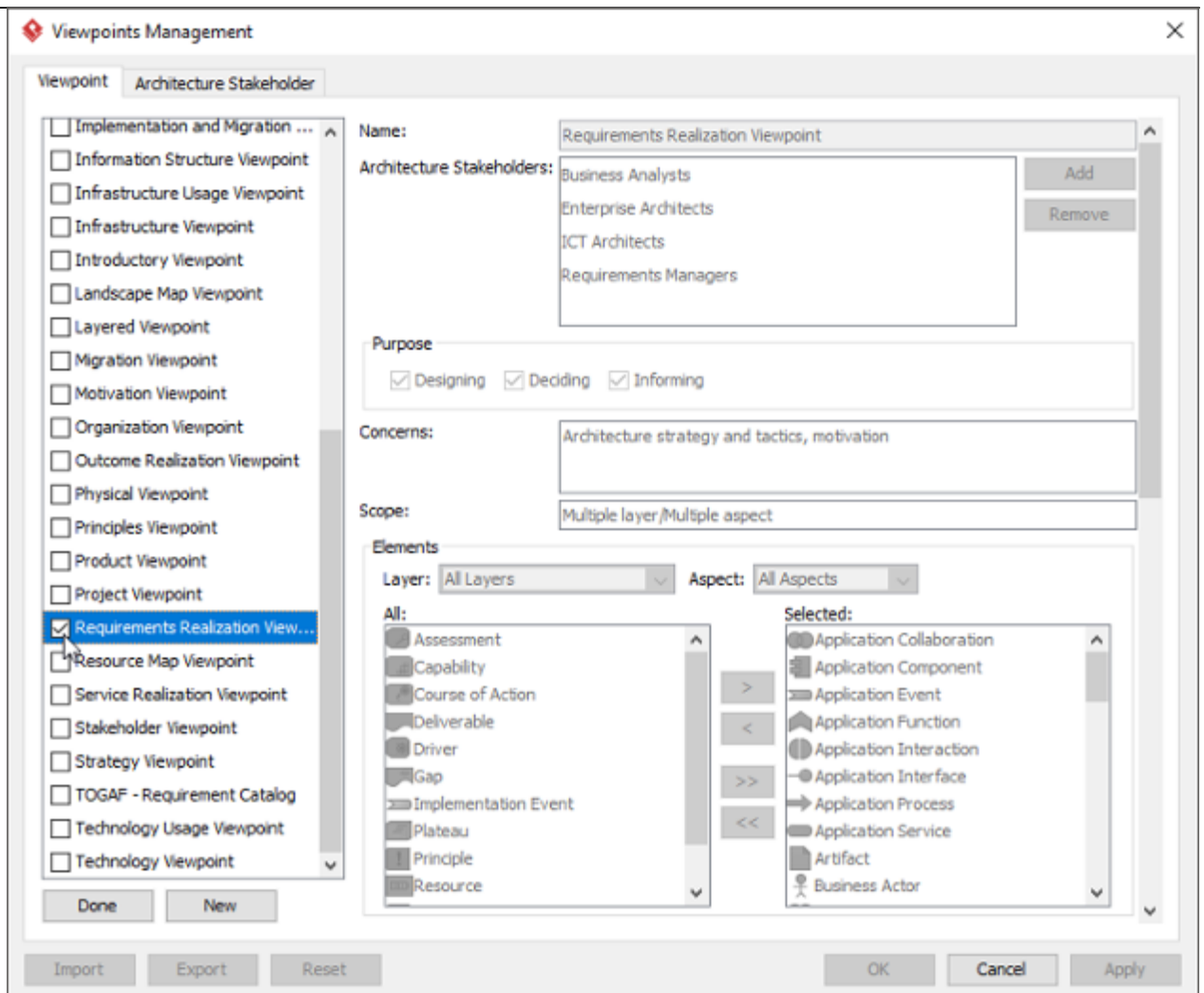
1. Select **Modeling > Manage Viewpoint** from the application toolbar.



2. This shows the **Viewpoint** tab. Click **Add** at bottom left.



3. This shows the list of example viewpoints. Select **Requirements Realization Viewpoint**. The stakeholder, purpose, concerns and related elements are presented on the right.

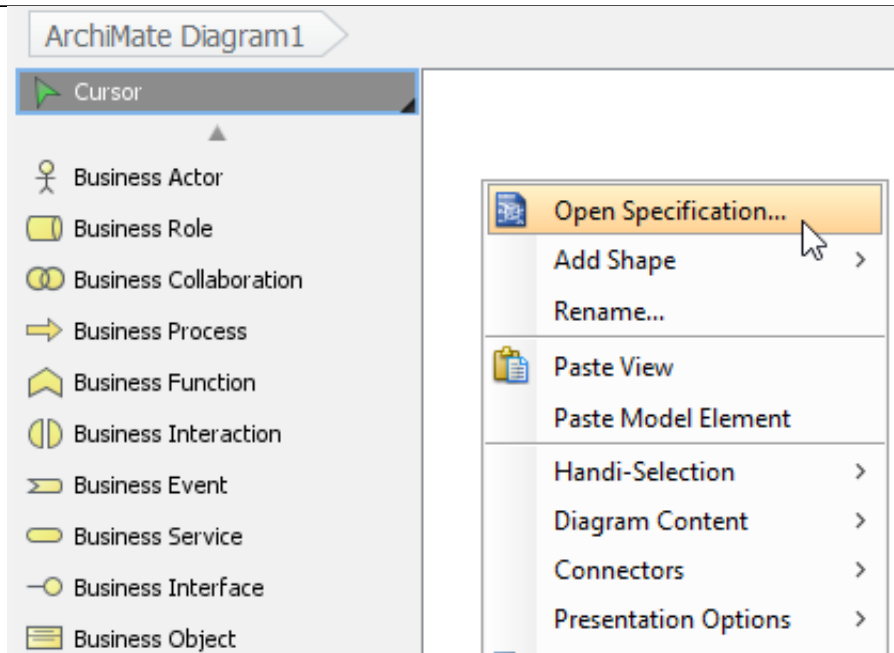


4. Click **Done**.
5. Click **OK** to confirm.

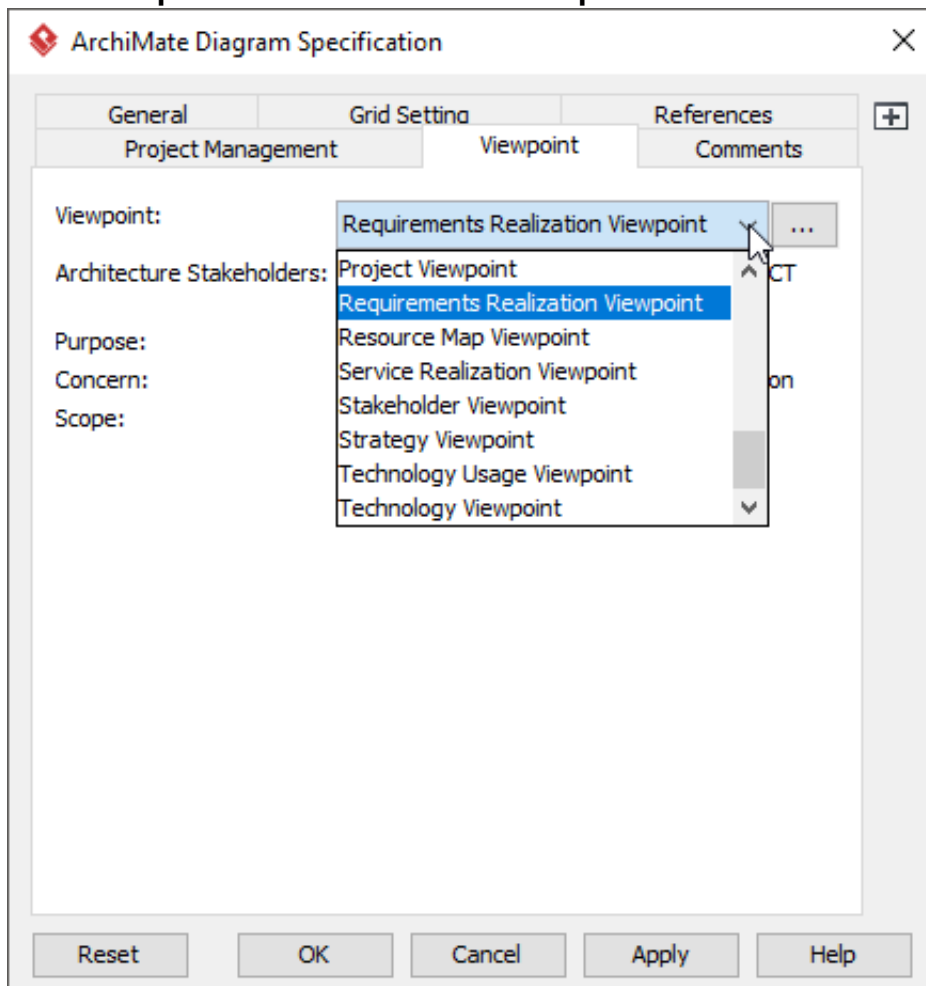
## Setting a viewpoint to diagram

To apply Requirements Realization Viewpoint on an ArchiMate diagram:

1. Right click on the ArchiMate diagram and select **Open Specification...** from the popup menu.



2. Open the **Viewpoint** tab.
3. Select **Requirements Realization Viewpoint**.



4. Click **OK** to return to the diagram. From now on, you can select the subset of ArchiMate elements and relationships defined under the Requirements Realization Viewpoint.

Cursor

- Business Actor
- Business Role
- Business Collaboration
- Business Process
- Business Function
- Business Interaction
- Business Event
- Business Service
- Business Interface
- Business Object
- Product
- Contract
- Representation
- Application Collaboration

