
ArchiMate Viewpoint: Resource Map Viewpoint

In the [ArchiMate](#) language, a viewpoint is a relevant subset of ArchiMate elements and relationships, put together on a diagram in representing a particular part of an architecture. ArchiMate suggests a set of [example viewpoints](#). Each of them comprises elements from different layers. Besides, the Grouping element, Junction, and Or Junction can be used in every viewpoint. These basic viewpoints can be used as starting points for modeling efforts. But keep in mind that these example viewpoints should not constrain modeling activities. Organizations should modify the example viewpoints or even to design their own viewpoints in addressing specific stakeholder concerns. This article describes one of the many example viewpoints - The Resource Map Viewpoint.

What is an Resource Map Viewpoint?

According to [ArchiMate 3.0.1 specification](#):

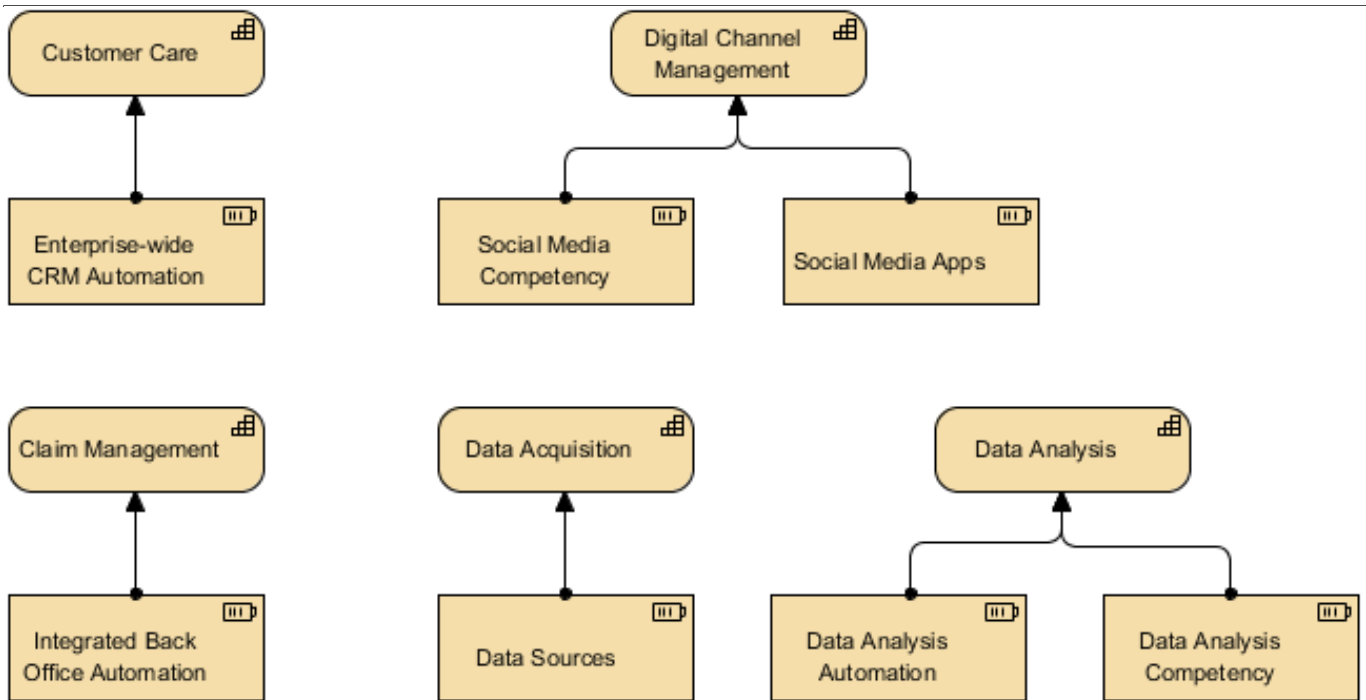
The resource map viewpoint allows the business architect to create a structured overview of the resources of the enterprise. A resource map typically shows two or three levels of resources across the entire enterprise. It can, for example, be used as a heat map to identify areas of investment. In some cases, a resource map may also show relationships between resources and the capabilities they are assigned to.

The table below describes Resource Map Viewpoint in more detail.

Attribute	Value
Stakeholders	Business managers, enterprise and business architects
Concerns	Architecture strategy and tactics, motivation
Purpose	Designing, deciding
Scope	Strategy

Resource Map Viewpoint Example

The figure below shows an ArchiMate diagram created under the Resource Map Viewpoint. By applying a viewpoint you are allowed to draw an ArchiMate diagram with a subset of ArchiMate elements and relationships, as defined under the viewpoint.

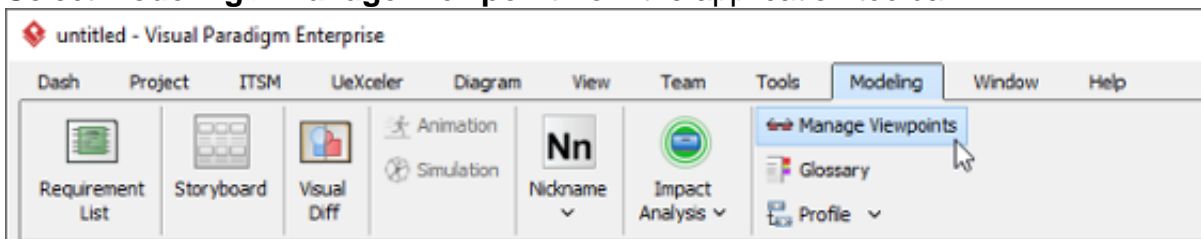


How to apply Resource Map Viewpoint?

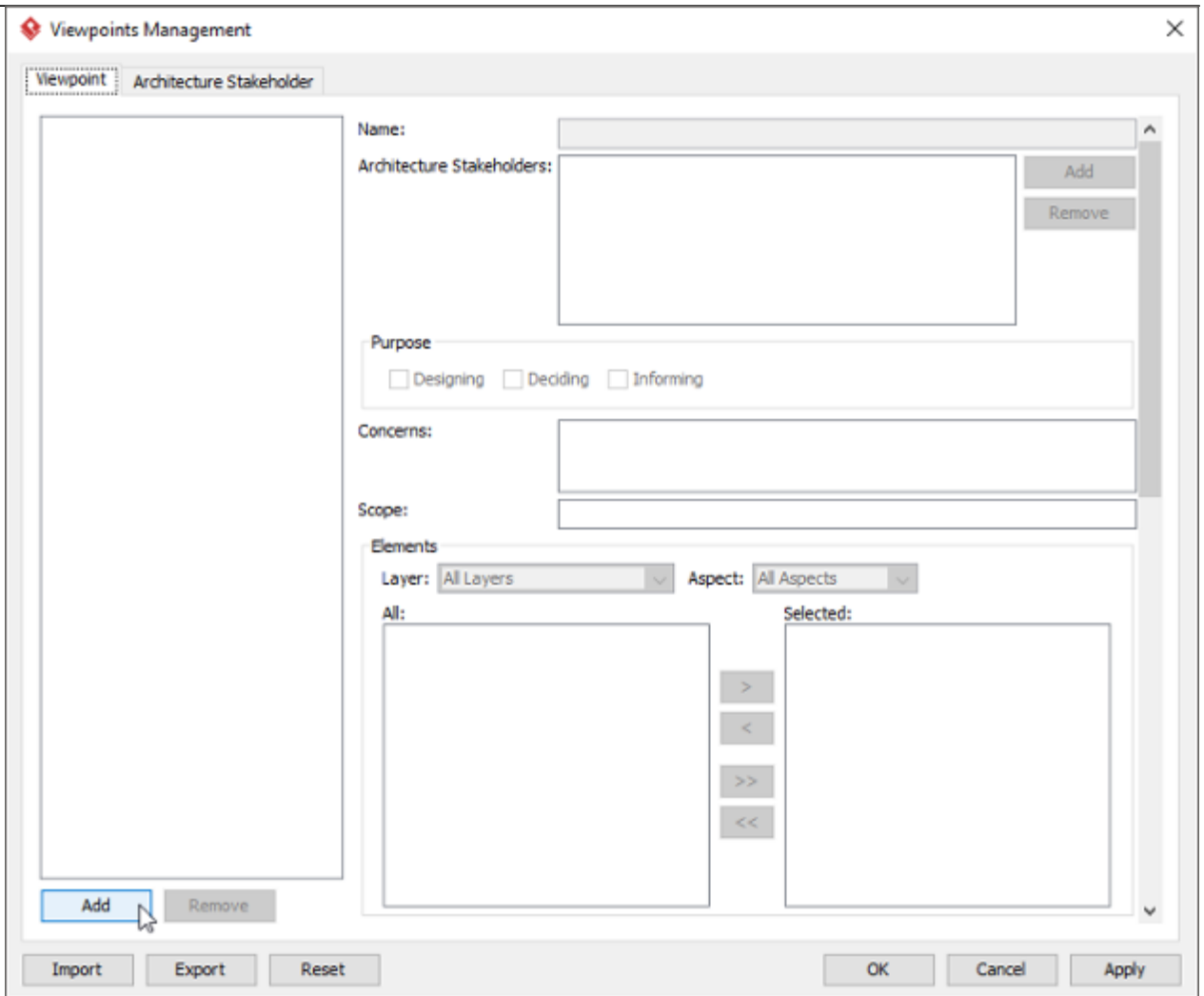
To apply Resource Map Viewpoint (or any other viewpoint) involves two main steps. The first step is to configure your project to use the viewpoint. The second step is to edit your diagram by selecting the viewpoint.

Project configuration

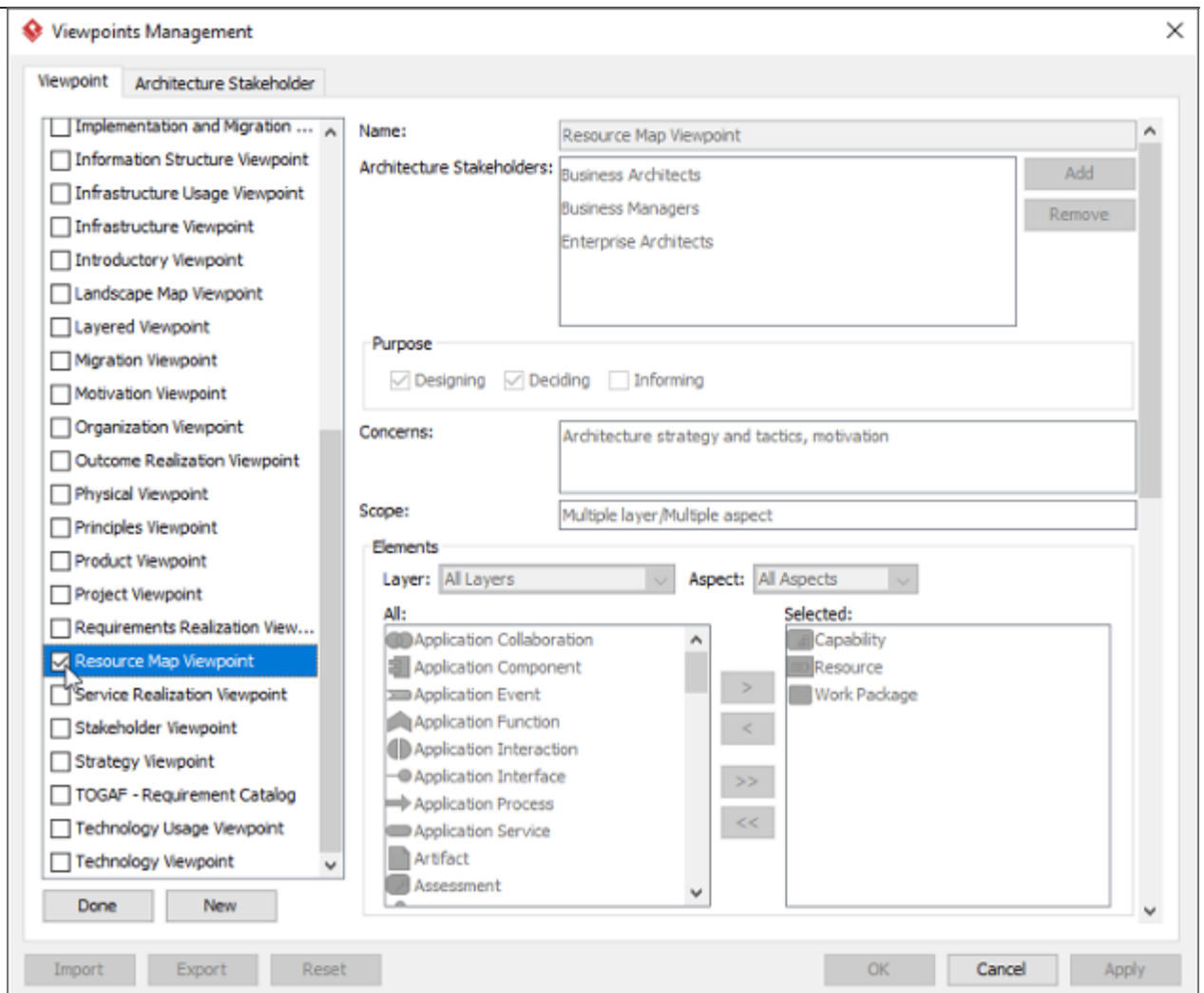
1. Select **Modeling > Manage Viewpoint** from the application toolbar.



2. This shows the **Viewpoint** tab. Click **Add** at bottom left.



3. This shows the list of example viewpoints. Select **Resource Map Viewpoint**. The stakeholder, purpose, concerns and related elements are presented on the right.

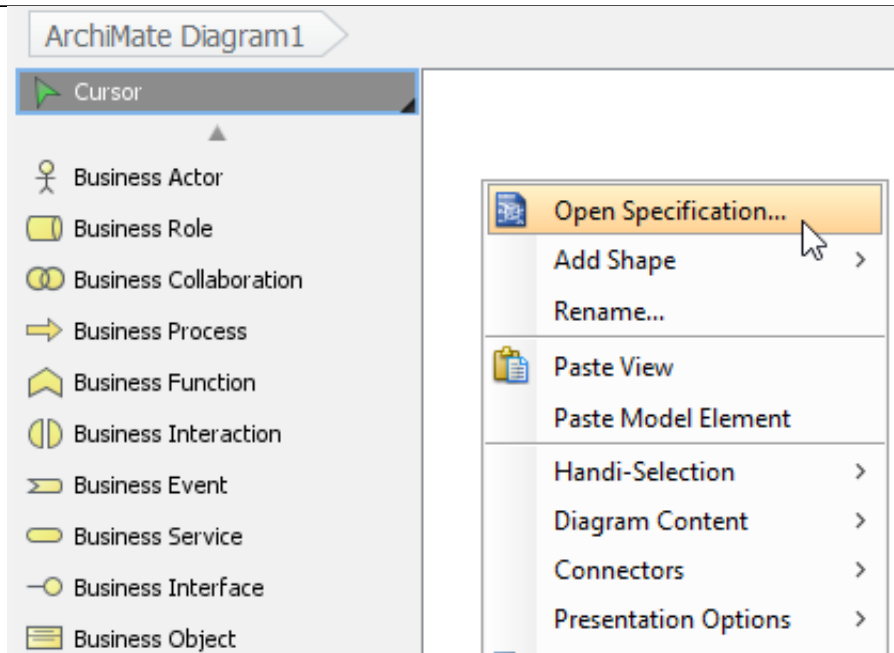


4. Click **Done**.
5. Click **OK** to confirm.

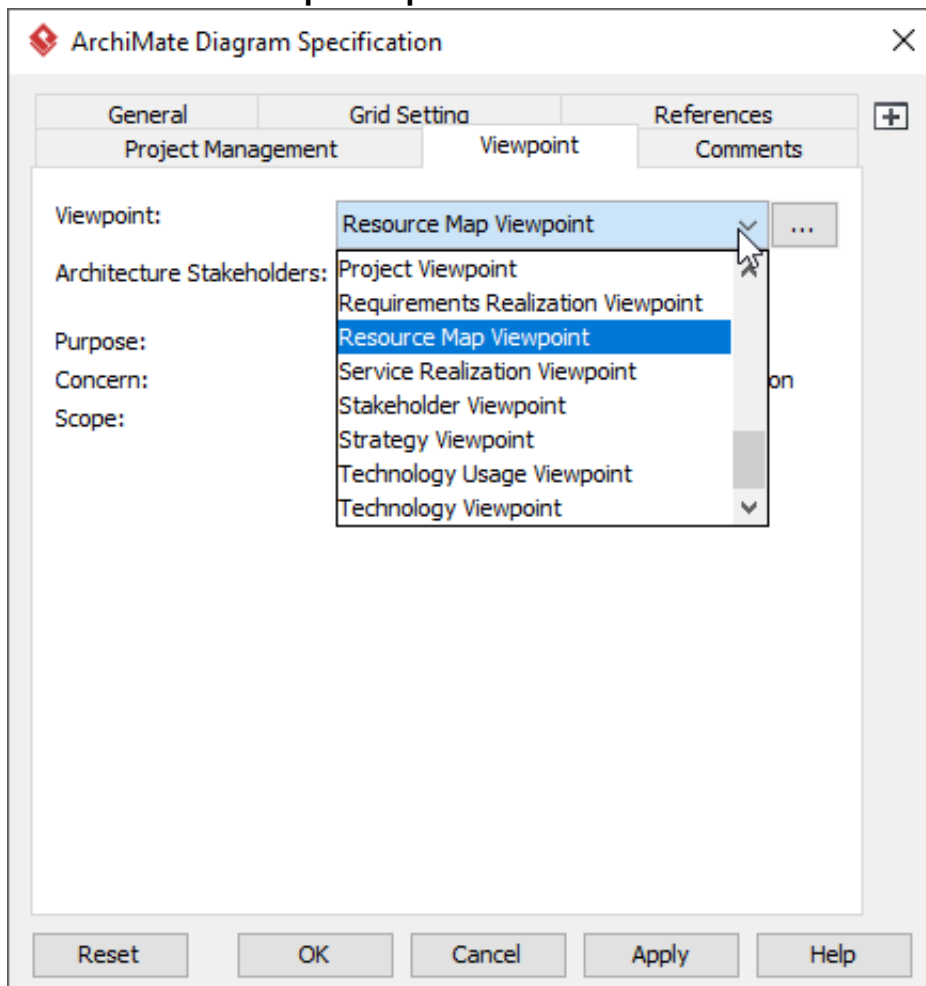
Setting a viewpoint to diagram

To apply Resource Map Viewpoint on an ArchiMate diagram:

1. Right click on the ArchiMate diagram and select **Open Specification...** from the popup menu.



2. Open the **Viewpoint** tab.
3. Select **Resource Map Viewpoint**.



4. Click **OK** to return to the diagram. From now on, you can select the subset of ArchiMate elements and relationships defined under the Resource Map Viewpoint.

- Cursor
- ↔ Assignment
 - > Realization
 - Triggering
 - Serving
 - Association
 - Provided
 - ↔R.. Read Access
 - ◇— Aggregation
 - ◆— Composition
 - Specialization
 - > Flow
 - 📍 Location
 - 📁 Grouping
 - And Junction

