
ArchiMate Viewpoint: Service Realization Viewpoint

In the [ArchiMate](#) language, a viewpoint is a relevant subset of ArchiMate elements and relationships, put together on a diagram in representing a particular part of an architecture. ArchiMate suggests a set of [example viewpoints](#). Each of them comprises elements from different layers. Besides, the Grouping element, Junction, and Or Junction can be used in every viewpoint. These basic viewpoints can be used as starting points for modeling efforts. But keep in mind that these example viewpoints should not constrain modeling activities. Organizations should modify the example viewpoints or even to design their own viewpoints in addressing specific stakeholder concerns. This article describes one of the many example viewpoints - The Service Realization Viewpoint.

What is an Service Realization Viewpoint?

According to [ArchiMate 3.0.1 specification](#):

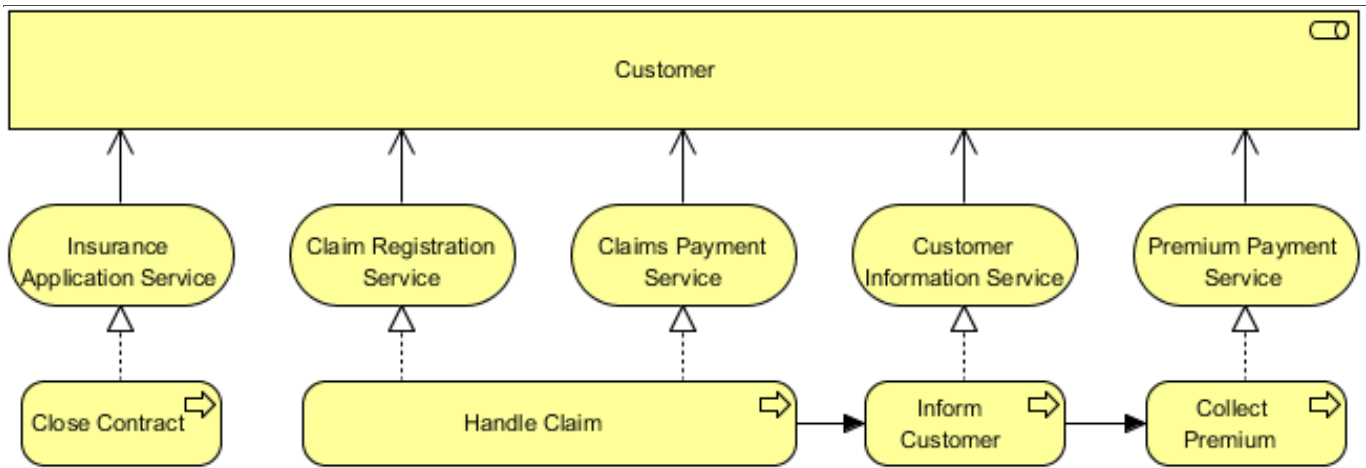
The service realization viewpoint is used to show how one or more business services are realized by the underlying processes (and sometimes by application components). Thus, it forms the bridge between the business products viewpoint and the business process view. It provides a “view from the outside” on one or more business processes.

The table below describes Service Realization Viewpoint in more detail.

Attribute	Value
Stakeholders	Process and domain architects, product and operational managers
Concerns	Added-value of business processes, consistency and completeness, responsibilities
Purpose	Designing, deciding
Scope	Multiple layer/Multiple aspect

Service Realization Viewpoint Example

The figure below shows an ArchiMate diagram created under the Service Realization Viewpoint. By applying a viewpoint you are allowed to draw an ArchiMate diagram with a subset of ArchiMate elements and relationships, as defined under the viewpoint.

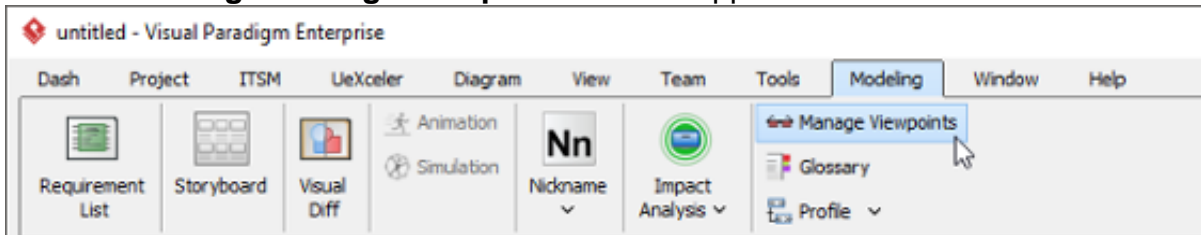


How to apply Service Realization Viewpoint?

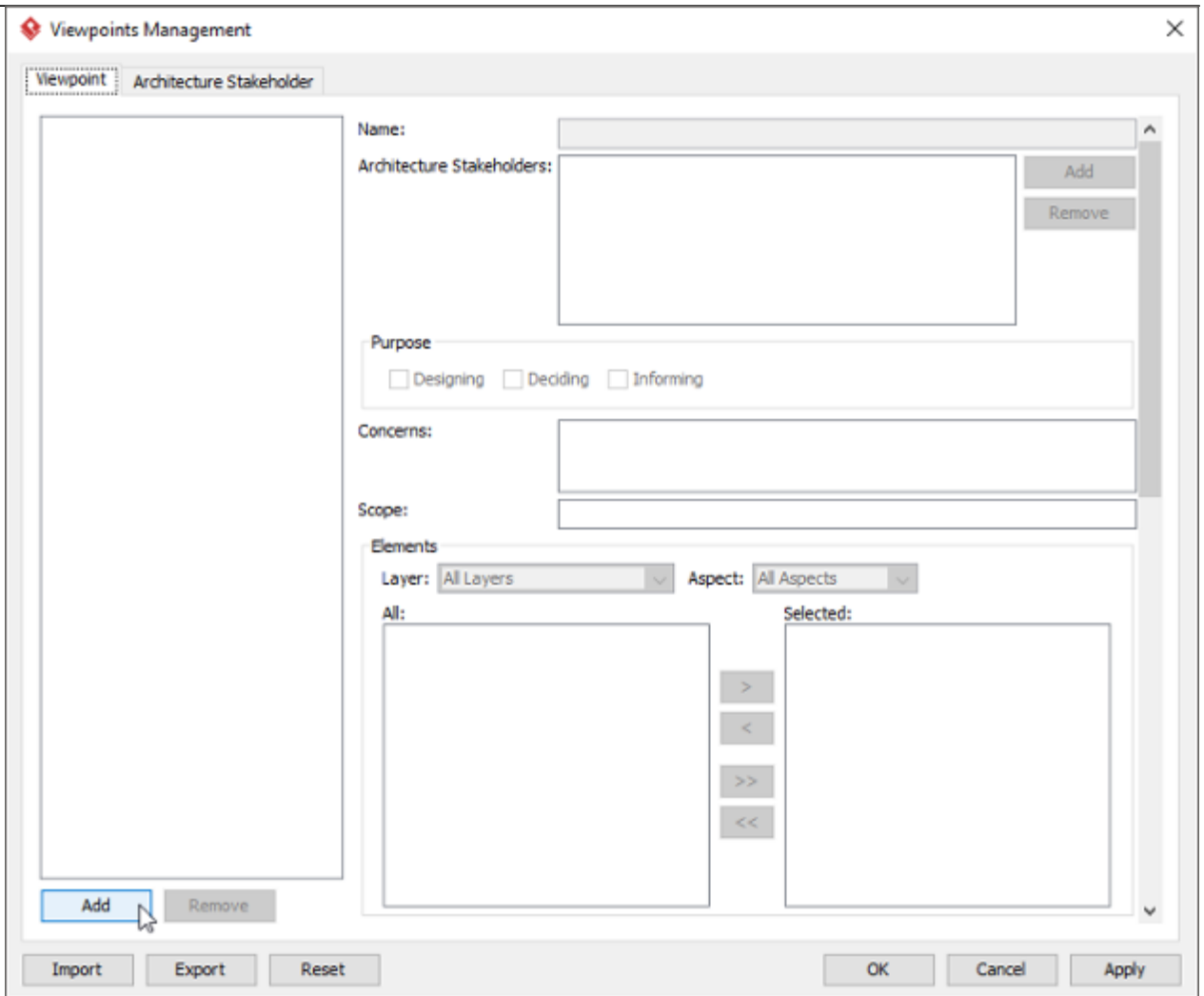
To apply Service Realization Viewpoint (or any other viewpoint) involves two main steps. The first step is to configure your project to use the viewpoint. The second step is to edit your diagram by selecting the viewpoint.

Project configuration

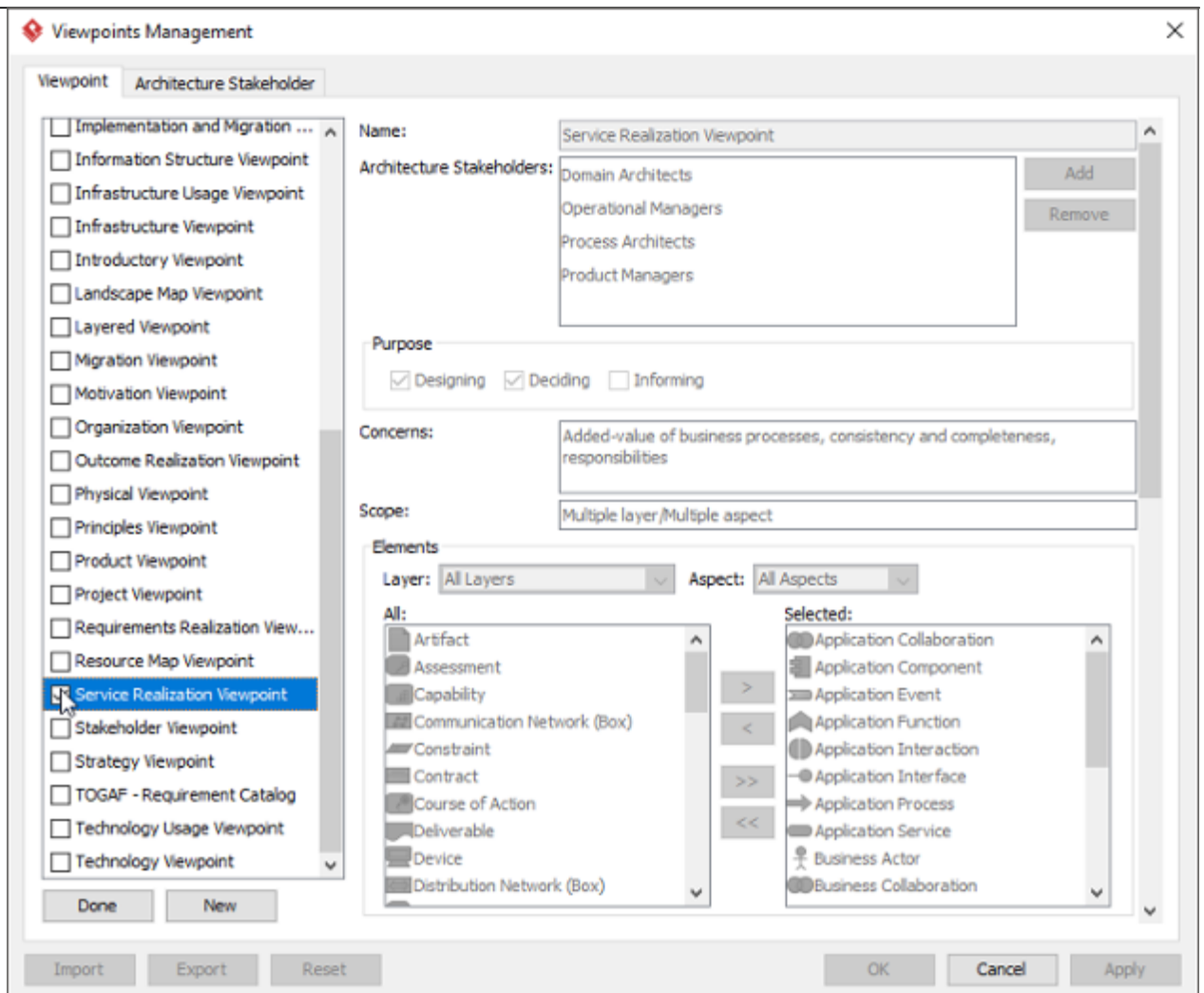
1. Select **Modeling > Manage Viewpoint** from the application toolbar.



2. This shows the **Viewpoint** tab. Click **Add** at bottom left.



3. This shows the list of example viewpoints. Select **Service Realization Viewpoint**. The stakeholder, purpose, concerns and related elements are presented on the right.

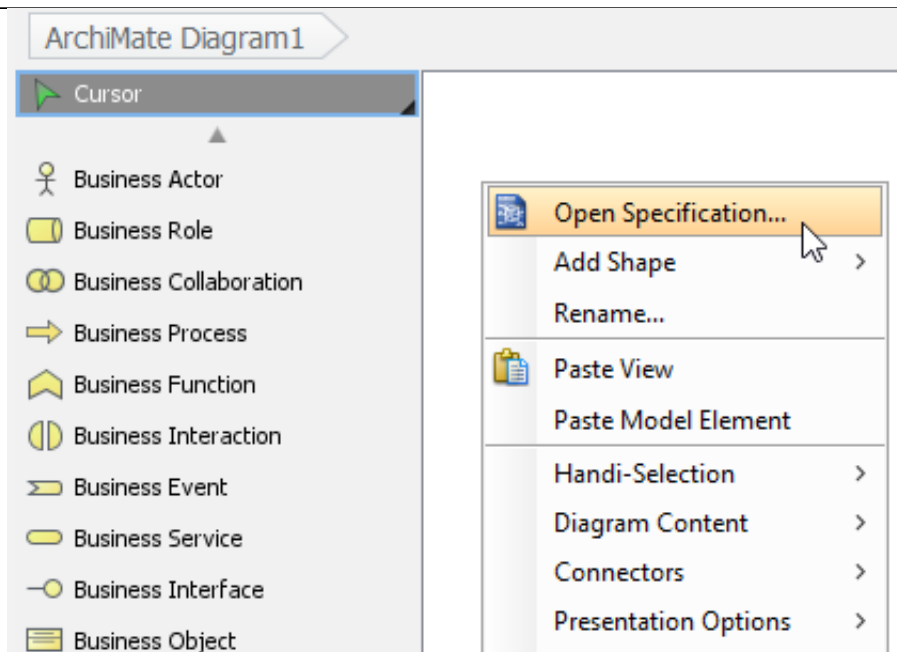


4. Click **Done**.
5. Click **OK** to confirm.

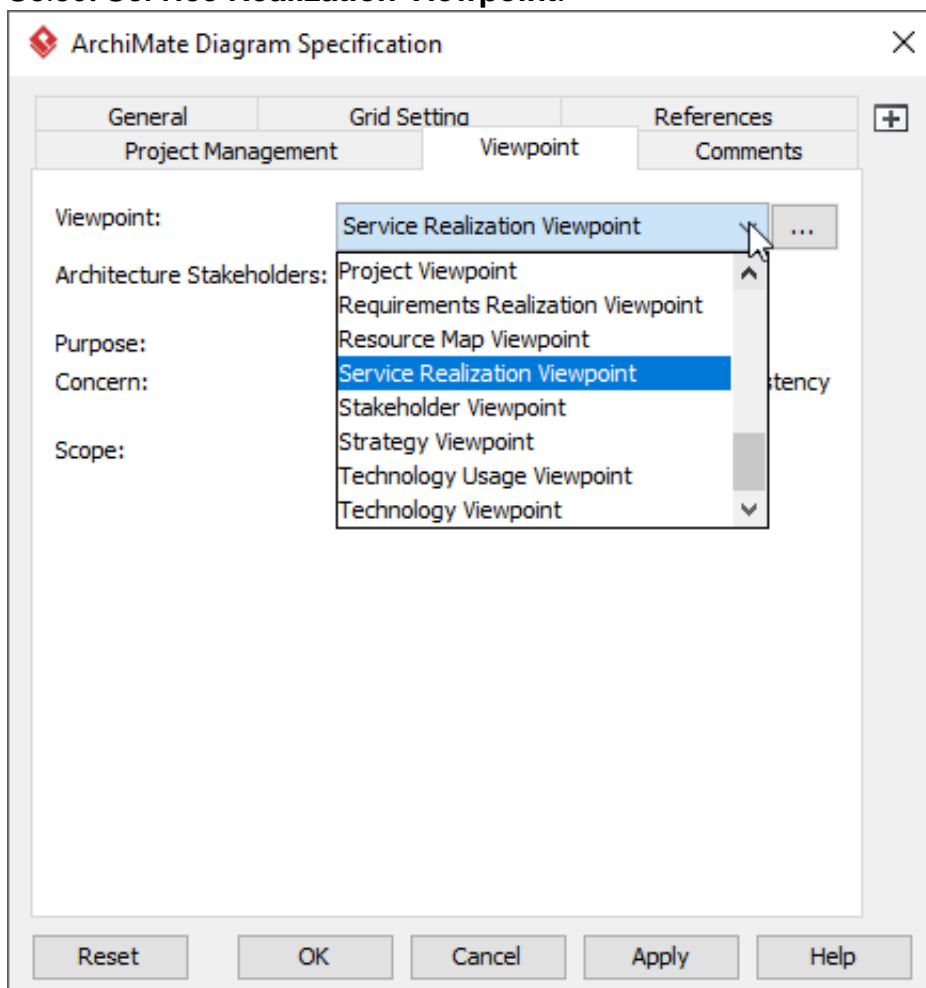
Setting a viewpoint to diagram

To apply Service Realization Viewpoint on an ArchiMate diagram:

1. Right click on the ArchiMate diagram and select **Open Specification...** from the popup menu.








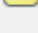
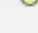
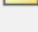






2. Open the **Viewpoint** tab.
3. Select **Service Realization Viewpoint**.



4. Click **OK** to return to the diagram. From now on, you can select the subset of ArchiMate elements and relationships defined under the Service Realization Viewpoint.

Cursor

-  Business Actor
-  Business Role
-  Business Collaboration
-  Business Process
-  Business Function
-  Business Interaction
-  Business Event
-  Business Service
-  Business Interface
-  Business Object
-  Representation

-  Application Collaboration
-  Application Component
-  Application Service

