
ArchiMate Viewpoint: Technology Usage Viewpoint

In the [ArchiMate](#) language, a viewpoint is a relevant subset of ArchiMate elements and relationships, put together on a diagram in representing a particular part of an architecture. ArchiMate suggests a set of [example viewpoints](#). Each of them comprises elements from different layers. Besides, the Grouping element, Junction, and Or Junction can be used in every viewpoint. These basic viewpoints can be used as starting points for modeling efforts. But keep in mind that these example viewpoints should not constrain modeling activities. Organizations should modify the example viewpoints or even to design their own viewpoints in addressing specific stakeholder concerns. This article describes one of the many example viewpoints - The Technology Usage Viewpoint.

What is an Technology Usage Viewpoint?

According to [ArchiMate 3.0.1 specification](#):

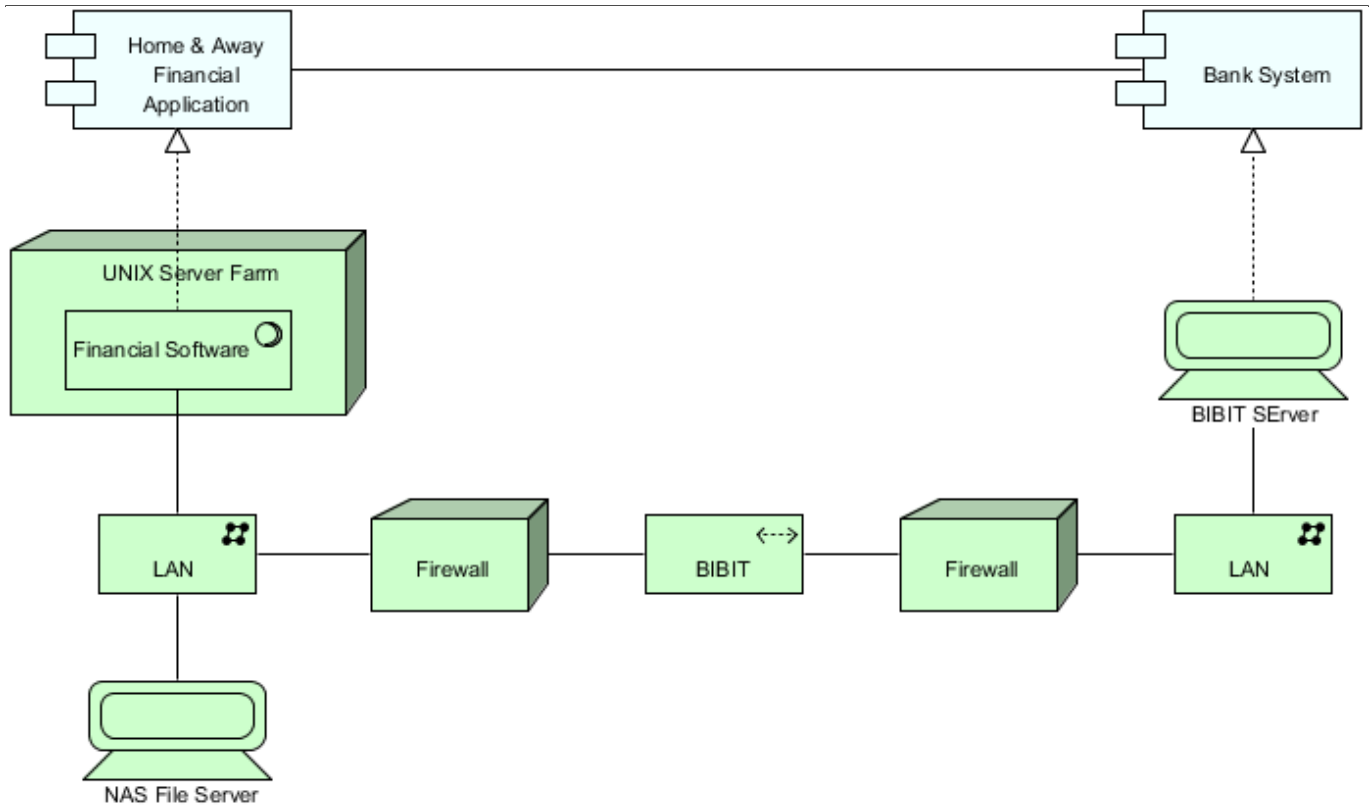
The technology usage viewpoint shows how applications are supported by the software and hardware technology: the technology services are delivered by the devices; system software and networks are provided to the applications. This viewpoint plays an important role in the analysis of performance and scalability, since it relates the physical infrastructure to the logical world of applications. It is very useful in determining the performance and quality requirements on the infrastructure based on the demands of the various applications that use it.

The table below describes Technology Usage Viewpoint in more detail.

Attribute	Value
Stakeholders	Application, infrastructure architects, operational managers
Concerns	Dependencies, performance, scalability
Purpose	Designing
Scope	Multiple layer/Multiple aspect

Technology Usage Viewpoint Example

The figure below shows an ArchiMate diagram created under the Technology Usage Viewpoint. By applying a viewpoint you are allowed to draw an ArchiMate diagram with a subset of ArchiMate elements and relationships, as defined under the viewpoint.

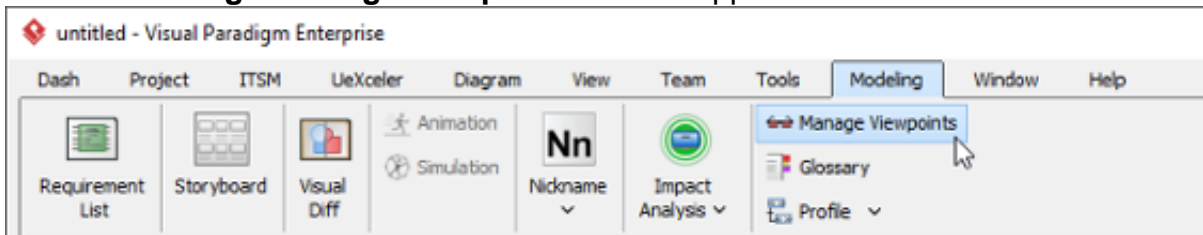


How to apply Technology Usage Viewpoint?

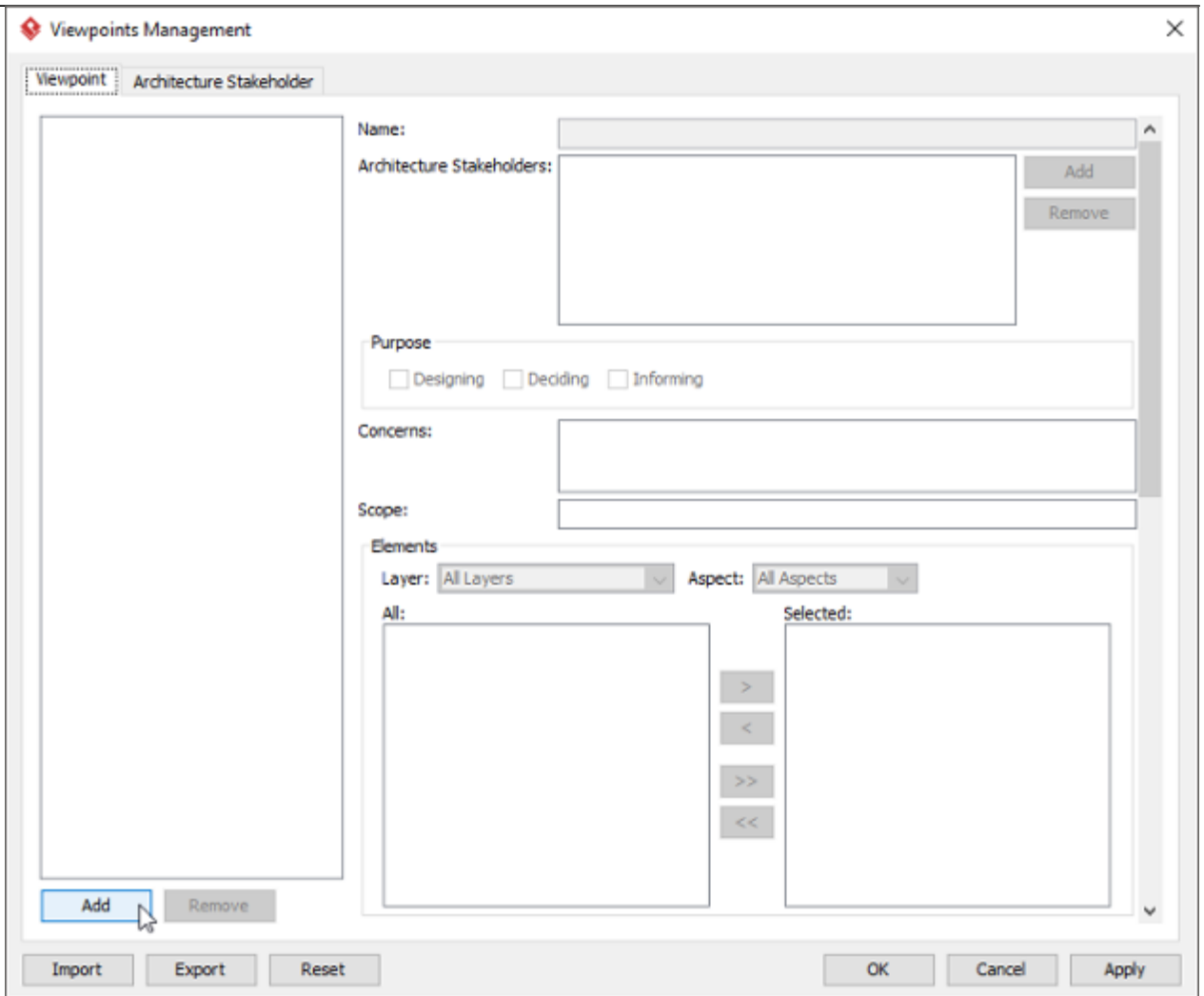
To apply Technology Usage Viewpoint (or any other viewpoint) involves two main steps. The first step is to configure your project to use the viewpoint. The second step is to edit your diagram by selecting the viewpoint.

Project configuration

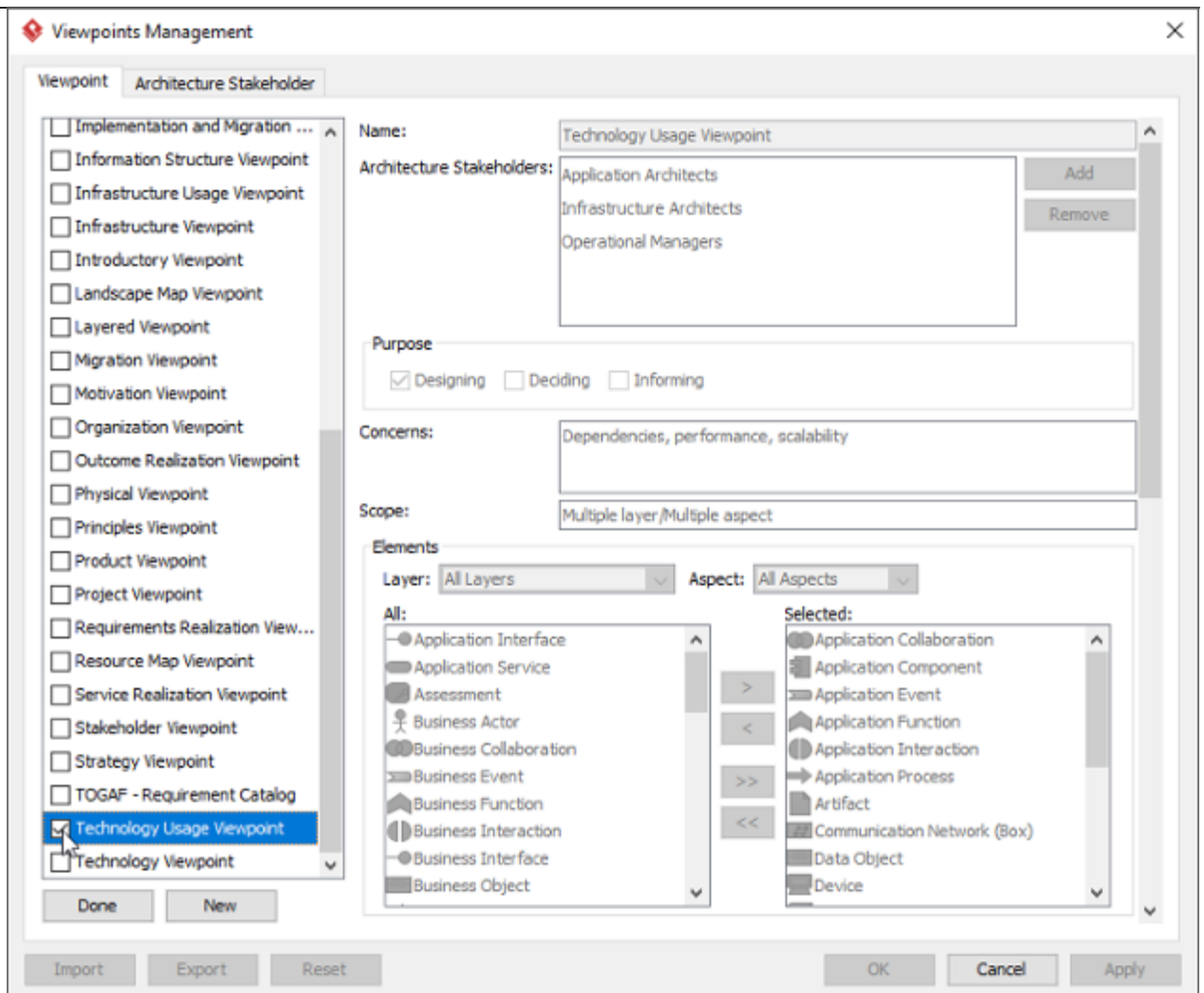
1. Select **Modeling > Manage Viewpoint** from the application toolbar.



2. This shows the **Viewpoint** tab. Click **Add** at bottom left.



3. This shows the list of example viewpoints. Select **Technology Usage Viewpoint**. The stakeholder, purpose, concerns and related elements are presented on the right.

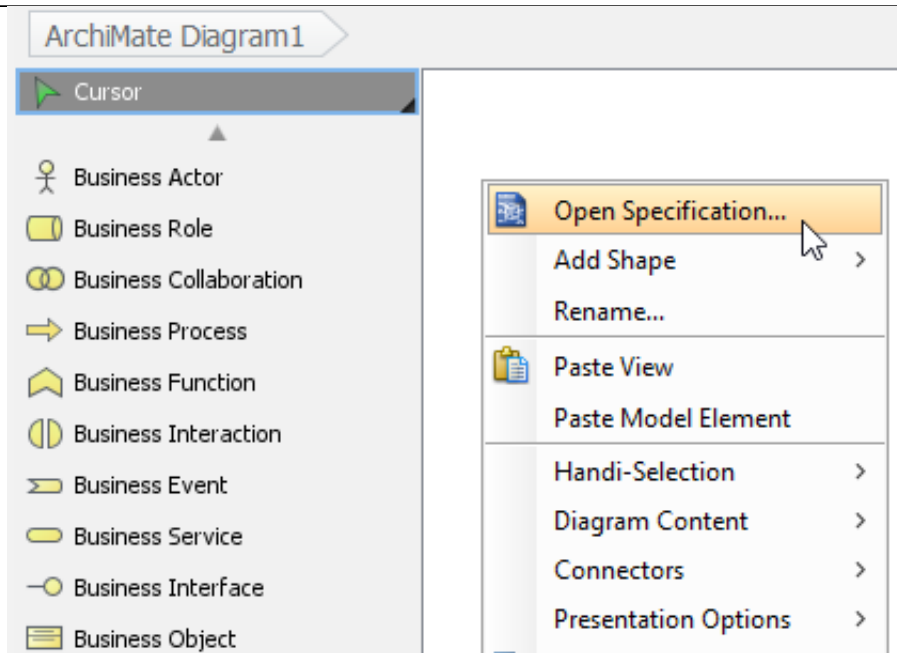


4. Click **Done**.
5. Click **OK** to confirm.

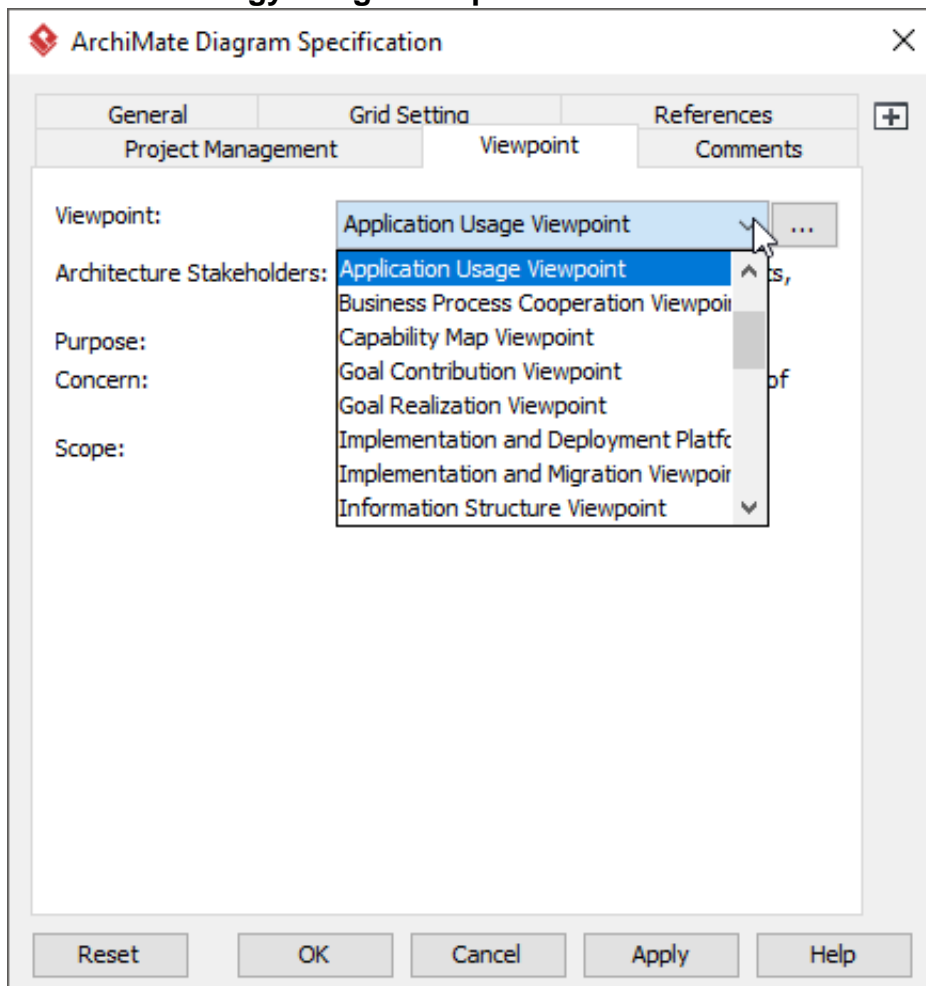
Setting a viewpoint to diagram

To apply Technology Usage Viewpoint on an ArchiMate diagram:

1. Right click on the ArchiMate diagram and select **Open Specification...** from the popup menu.



2. Open the **Viewpoint** tab.
3. Select **Technology Usage Viewpoint**.



4. Click **OK** to return to the diagram. From now on, you can select the subset of ArchiMate elements and relationships defined under the Technology Usage Viewpoint.

- Cursor
- Application Collaboration
 - Application Component
 - Application Function
 - Application Interaction
 - Application Process
 - Application Event
 - Data Object
-
- Node
 - Device
 - System Software
 - Technology Interface
 - Technology Function
 - Technology Service
 - Technology Collaboration

