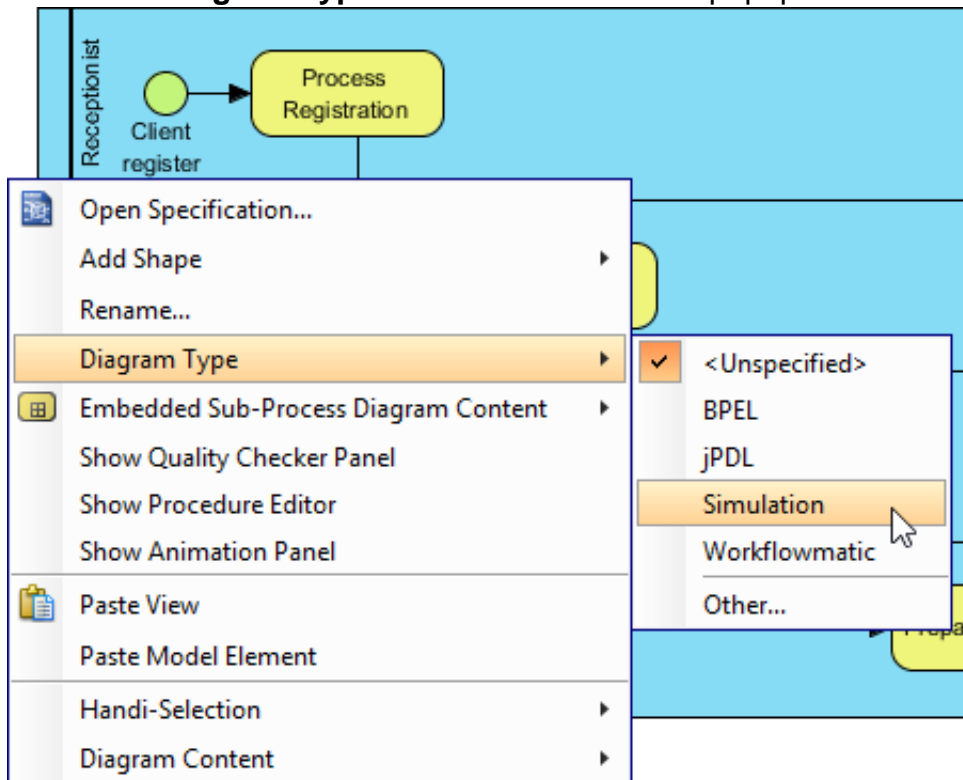


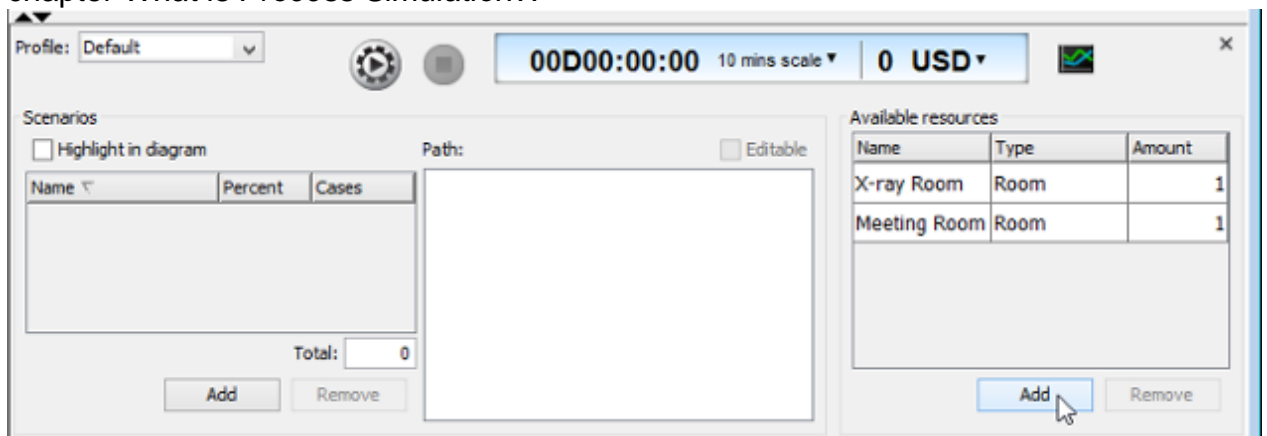
How to simulate a business process

In order to [simulate a business process](#), you must provide performance-related information to the business process diagram, such as resource consumption and duration of flow objects, so that the simulation tool can analyze the information and conduct a simulation. Below are what you have to do to start simulation.

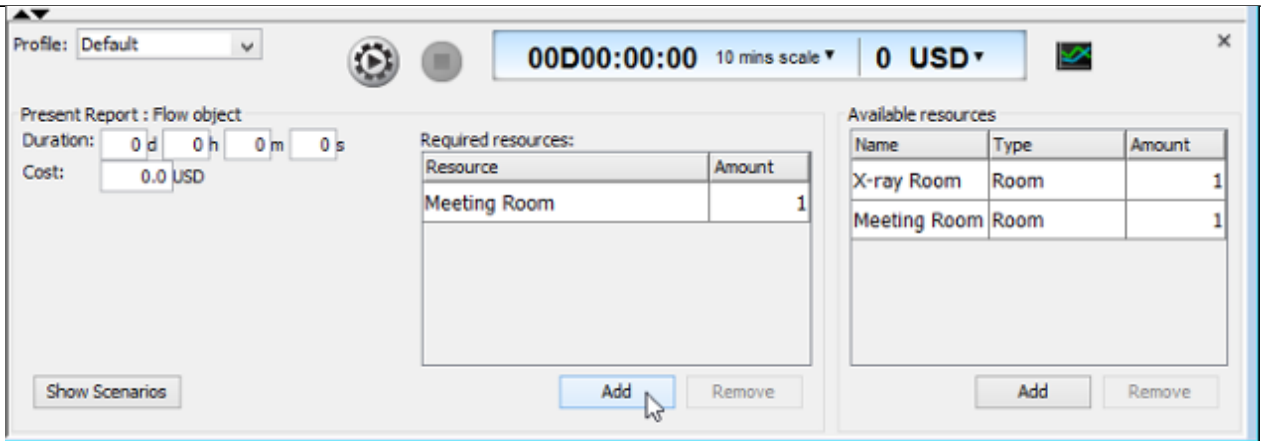
1. Right click on the background of the business process diagram that you want simulate and select **Diagram Type > Simulation** from the popup menu.



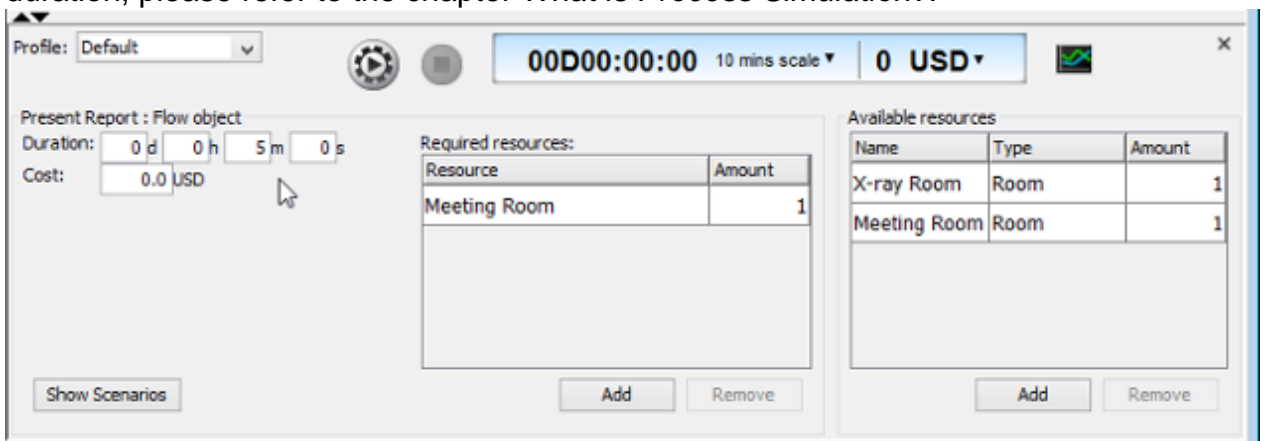
2. In the **Simulation Control Panel**, click **Add** under **Available resources** to define the resources that can be used by the flow objects in the business process diagram in order to complete the tasks. If you want to know more about resources, please refer to the chapter *What is Process Simulation?*.



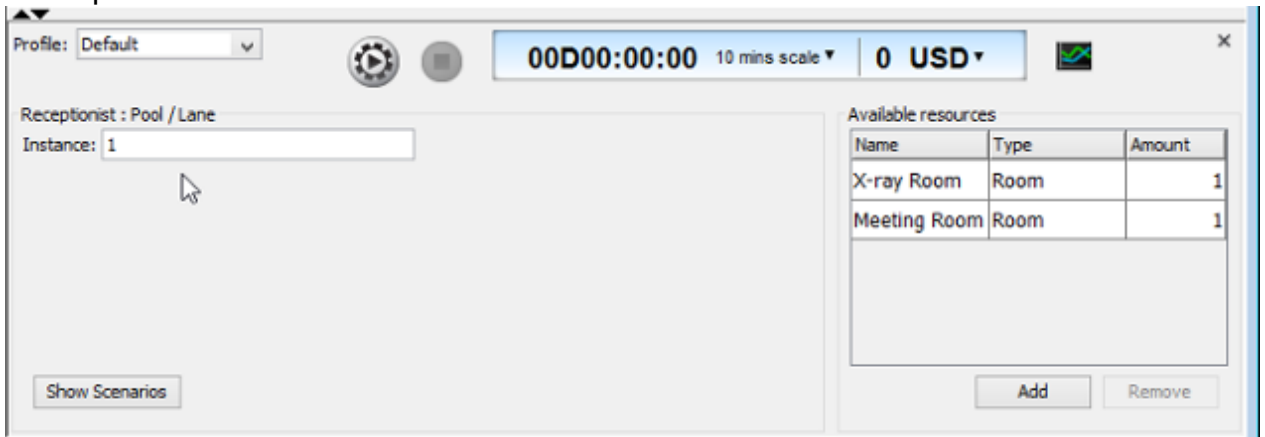
3. For each of the flow objects, select it in diagram and click **Add** under **Required Resources** in **Simulation Control Panel** to add the resource(s) the participant needed to complete the job when reaching the selected flow object.



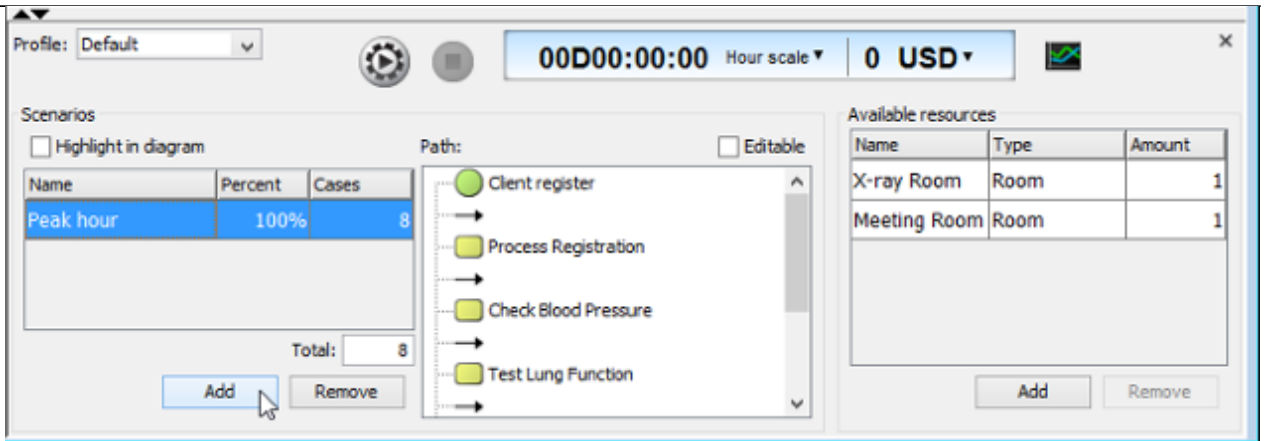
- For each of the flow objects, select it in diagram and set in **Simulation Control Panel** its duration, which is the time it takes to get completed. If you want to know more about duration, please refer to the chapter *What is Process Simulation?*.



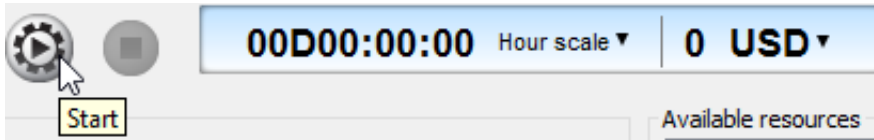
- For each lane and pool (without lane), select it in diagram and set its instance in **Simulation Control Panel** which represents the number of participants that take part in the process.



- Click on the background of diagram or click **Show Scenarios** in **Simulation Control Panel**.
- Click **Add** under Scenarios in **Simulation Control Panel** to add the paths to be executed during simulation. For each scenario, set the name that describe the path and the number of instances for the number of copies of the path to execute.



8. Click Start in **Simulation Control Panel** to start simulation.



Now, you can watch the simulation in diagram, to see the executions of scenarios and identify bottlenecks.

