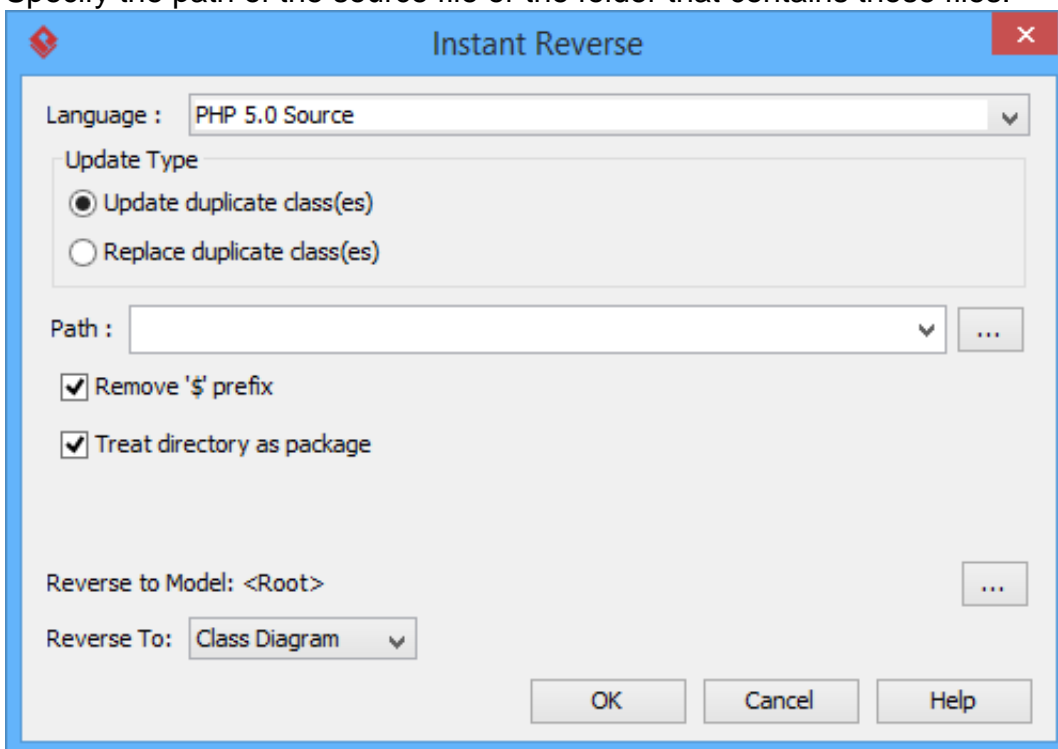

How to generate UML from PHP 5.0

[Instant Reverse](#) is a process to produce [UML class model](#) from a given input of source code. With instant reverse, you can reverse a snap shot of your code-base to UML classes and form class diagram in further. By bringing code content into visual UML model, this helps programmers or software engineers to review an implementation, identify potential bugs or deficiency and look for possible improvements. Apart from this, developers may reverse a code library as UML classes and construct model with them, like to reverse a generic collection framework and develop your own framework by extending the Determining generic one. In this chapter, we will go through the instant reverse of PHP 5.0 source files.

Reverse engineering UML classes from source files

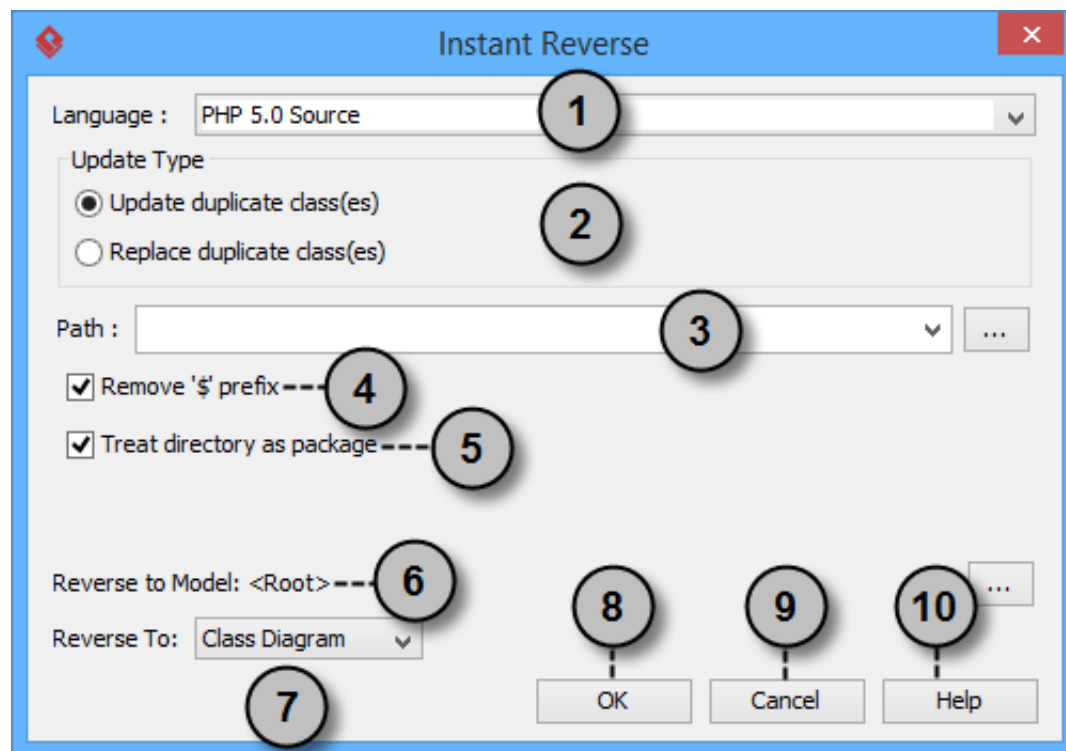
1. Select **Tools > Code > Instant Reverse...** from the toolbar.
2. In the **Instant Reverse** window, select **PHP 5.0 source files** as the **Language**.
3. Specify the path of the source file or the folder that contains those files.



4. You can place reversed classes to specific model. For example, to place legacy code to a model named *Old*, to place system prototype to a model named *Prototype* and so forth. To do this:
 1. Click on the ... button at the end of the **Reverse to Model** row.
 2. In the **Select Parent Model** window, either select an existing model, or create one by clicking **New Model**.
 3. Click **OK** to confirm.
5. Click **OK** to start reversing.
6. Upon finishing, you will see the **Instant Reverse Form Diagram** window appear. If you want to form a class diagram with the reversed classes, select the classes to form diagram, configure the options and click **OK** to proceed. Read the next section for detail. If you do not want to form diagram now, click **Cancel** to exit. **Note:** By cancelling from forming diagram, it just means you do not want to form diagram with the reversed

classes for the time being. You can still look for the classes in **Model Explorer** or **Class Repository**, and possibly form diagram later on manually.

Overview of Instant Reverse



No.	Name	Description
1	Language	The language of source to reverse.
2	Update type	