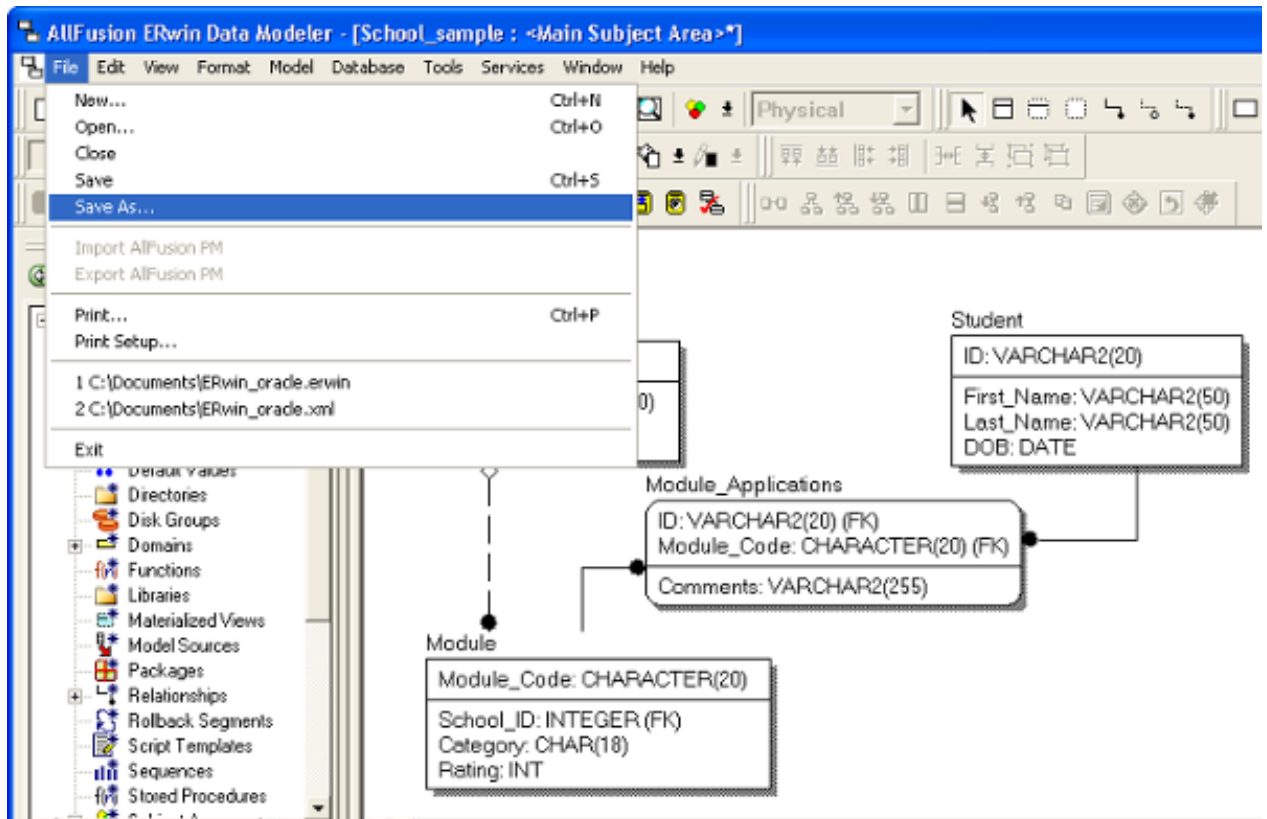


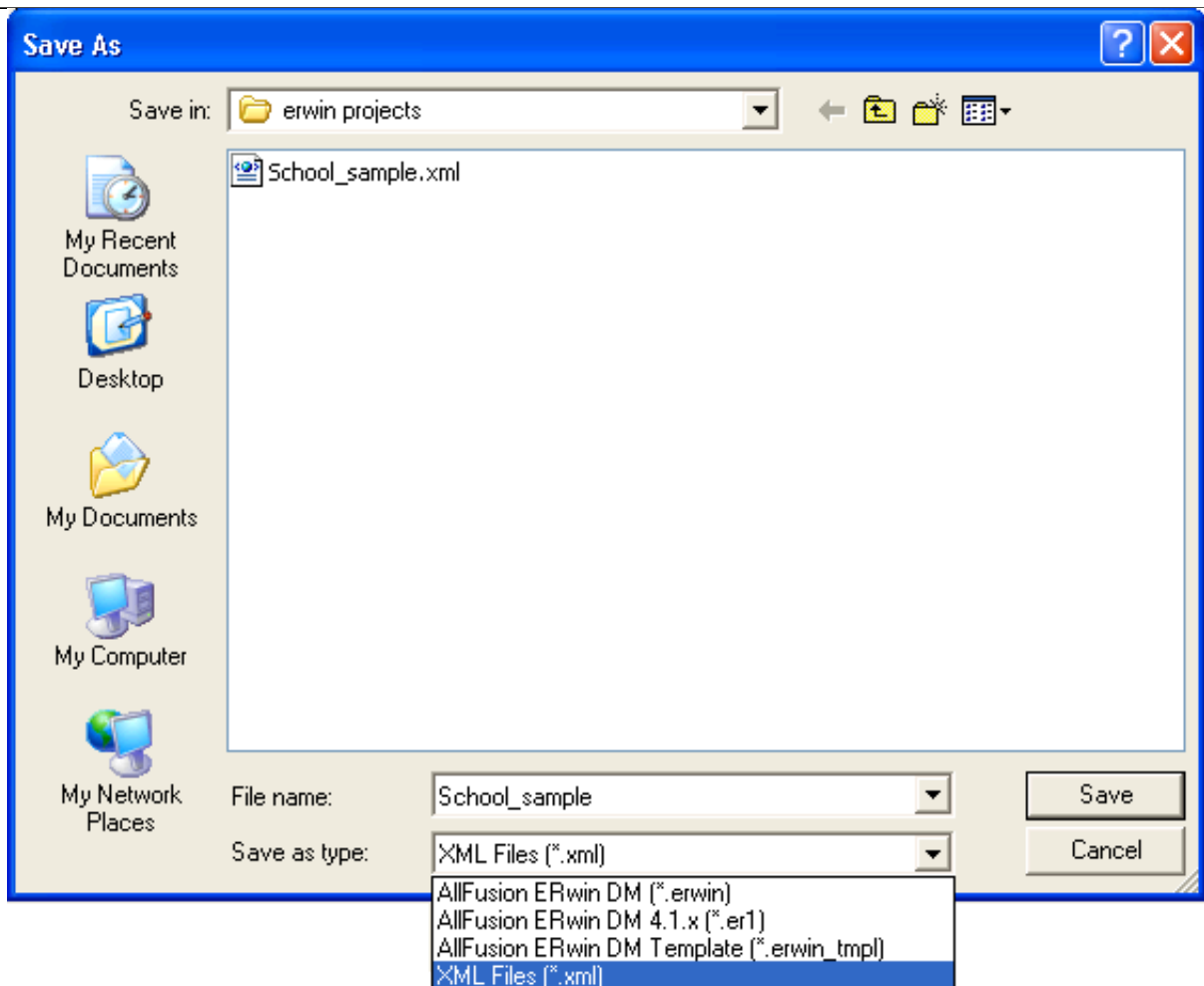
Importing ERwin Data Modeler to Visual Paradigm

ERwin Data Modeler is a data modeling tool. You can import ERwin diagrams and entity models into Visual Paradigm with all properties preserved.

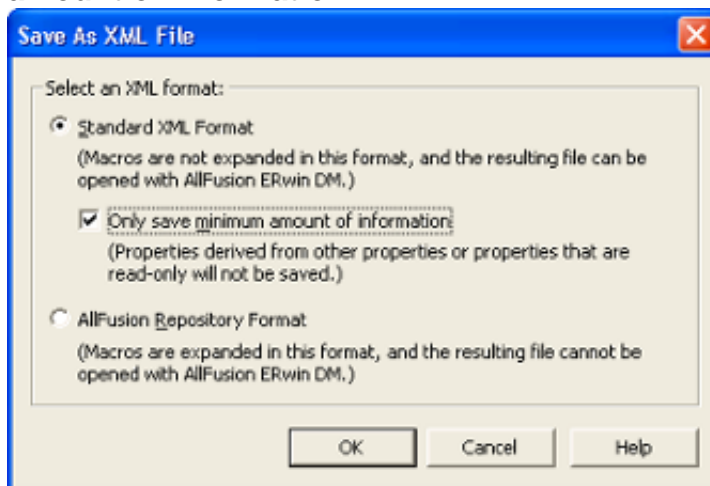
1. Here is a ERwin Data Modeler Project. In order to allow Visual Paradigm to import it, you need to save it as an XML file. Select **File > Save As...** from the menu.



2. Select **XML Files (*.xml)** in **Save as type** and enter the file name in the **Save As** window.



3. Click **Save**. This popups the **Save as XML File** window.
4. Keep using the default settings **Standard XML Format** and **Only save minimum amount of information**.



5. Click **OK** to confirm. This saves an XML file that can be used for importing into Visual Paradigm.
6. To import an ERwin Data Modeler project into Visual Paradigm, select **Project > Import > ERwin Project(XML)...** in the toolbar of Visual Paradigm.
7. Specify the file path of the XML file.
8. Click **OK** to start importing. When import is completed, the **Open Imported Entity Relationship Diagram(s)** window will appear.
9. Select the diagram(s) to open and click **Open** to open them. The drawings will then be opened.

