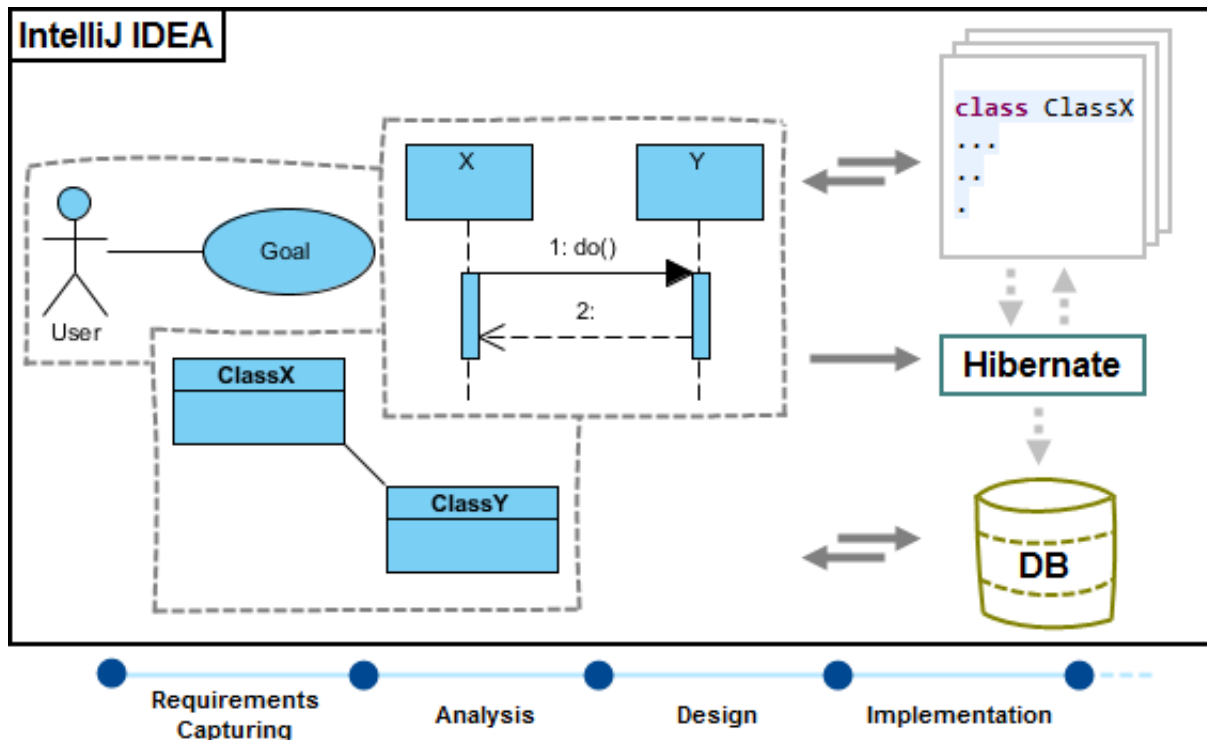


# How to integrate Visual Paradigm with IntelliJ IDEA

Visual Paradigm enables you to integrate the visual modeling environment with [IntelliJ IDEA](#), providing full software development life cycle support. By designing your software system in Visual Paradigm, you can generate programming source code from [class diagram](#) to an IntelliJ IDEA project. Also, you can reverse engineer your source code into class models in Visual Paradigm.

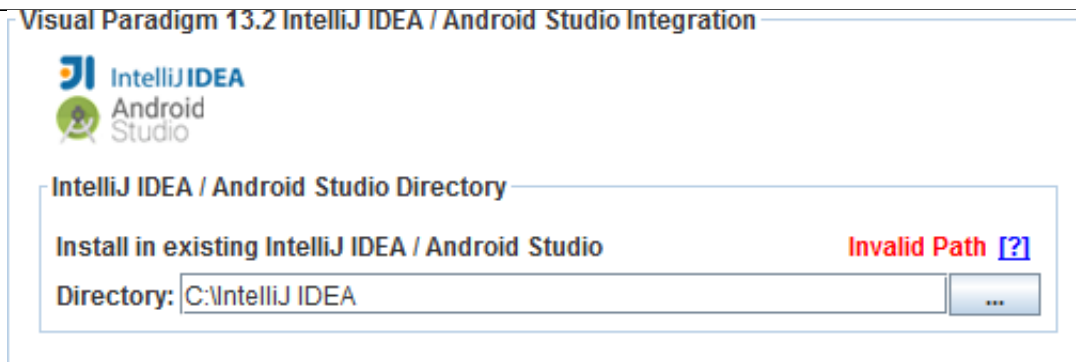


## Installation

First of all, please make sure you have IntelliJ IDEA 11.0 or above available. To install IntelliJ IDEA Integration from Visual Paradigm:

1. In Visual Paradigm, select **Window > Integration > IDE Integration...** from the toolbar.
2. Select **IntelliJ IDEA / Android Studio Integration**. You can run Visual Paradigm in multiple IDEs. In other words, if you need you can select multiple IDEs here. Click **Next**.
  - Eclipse Integration
  - NetBeans Integration
  - IntelliJ IDEA / Android Studio Integration
  - Visual Studio Integration

**Visual Paradigm Visual Studio Integration can only be installed by the user with Computer administrator account**
3. Specify the folder path of IntelliJ IDEA. Click **Next** to start copying files to your IDE.



**Note:** IntelliJ IDEA integration can only be installed on one IntelliJ IDEA directory only.

## Un-Installation

To remove the installation with an integrated IDE, perform an uninstallation.

1. In Visual Paradigm, select **Window > Integration > IDE Integration...** from the toolbar.
2. Select the radio button **Uninstall**.
3. Select **IntelliJ IDEA / Android Studio Integration**.  
 Install  Uninstall



Select IntelliJ IDEA / Android Studio integration for uninstallation

4. Click **Next**.
5. Click **Next** for file removal.