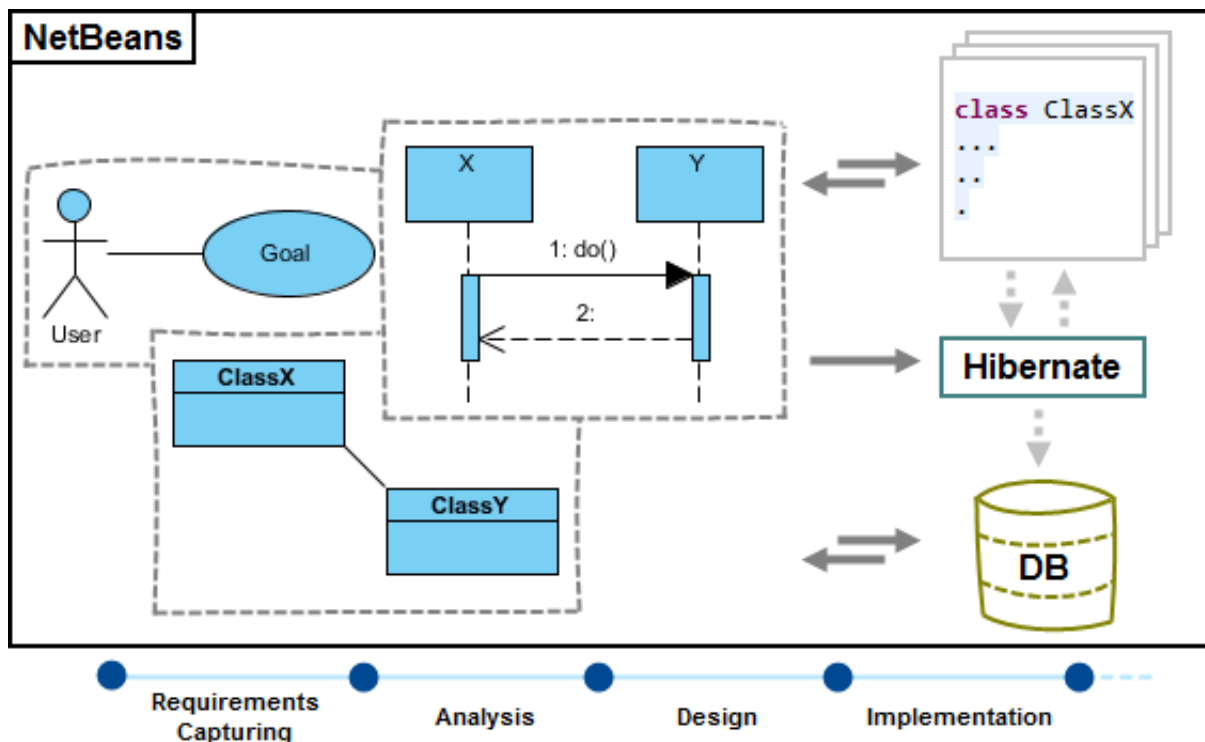


How to integrate Visual Paradigm with NetBeans

Visual Paradigm enables you to integrate the visual modeling environment with [NetBeans](#), providing full software development life cycle support. By designing your software system in Visual Paradigm, you can generate programming source code from class diagram to an NetBeans project. Also, you can reverse engineer your source code into [class models](#) in Visual Paradigm.



Installation

First of all, please make sure you have NetBeans 6.7 or above available. To install NetBeans Integration from Visual Paradigm:

1. In Visual Paradigm, select **Window > Integration > IDE Integration...** from the toolbar.
2. Select **NetBeans Integration**. You can run Visual Paradigm in multiple IDEs. In other words, if you need you can select multiple IDEs here. Click **Next**.

Eclipse Integration

NetBeans Integration

IntelliJ IDEA / Android Studio Integration

Visual Studio Integration

Visual Paradigm Visual Studio Integration can only be installed by the user with Computer administrator account

3. Specify the folder path of NetBeans. Click **Next** to start copying files to your IDE.

Notes:

1. NetBeans integration can only be installed on one NetBeans directory only.
2. If you cannot find any Visual Paradigm menus in NetBeans after the installation, it could be due to our plug-in failed to be recognized by NetBeans. To solve this problem, please deactivate any plug-in in NetBeans and restart NetBeans.
3. You can manage plug-in in NetBeans by selecting **Tools > Plugin** in NetBeans.

Un-Installation

To remove the installation with an integrated IDE, perform an uninstallation.

1. In Visual Paradigm, select **Window > Integration > IDE Integration...** from the toolbar.
2. Select the radio button **Uninstall**.
3. Select **NetBeans Integration**.
 Install Uninstall

Visual Paradigm 13.2



Perform business process modeling (BPMN), UML modeling, use case management and database design (ERD) in your favorite IDE, thanks to the seamless integration with the following IDEs.

- Eclipse Integration
- NetBeans Integration
- IntelliJ IDEA / Android Studio Integration
- Visual Studio Integration

Visual Paradigm Visual Studio Integration can only be installed by the user with Computer administrator account

4. Click **Next**.
5. Click **Next** for file removal.