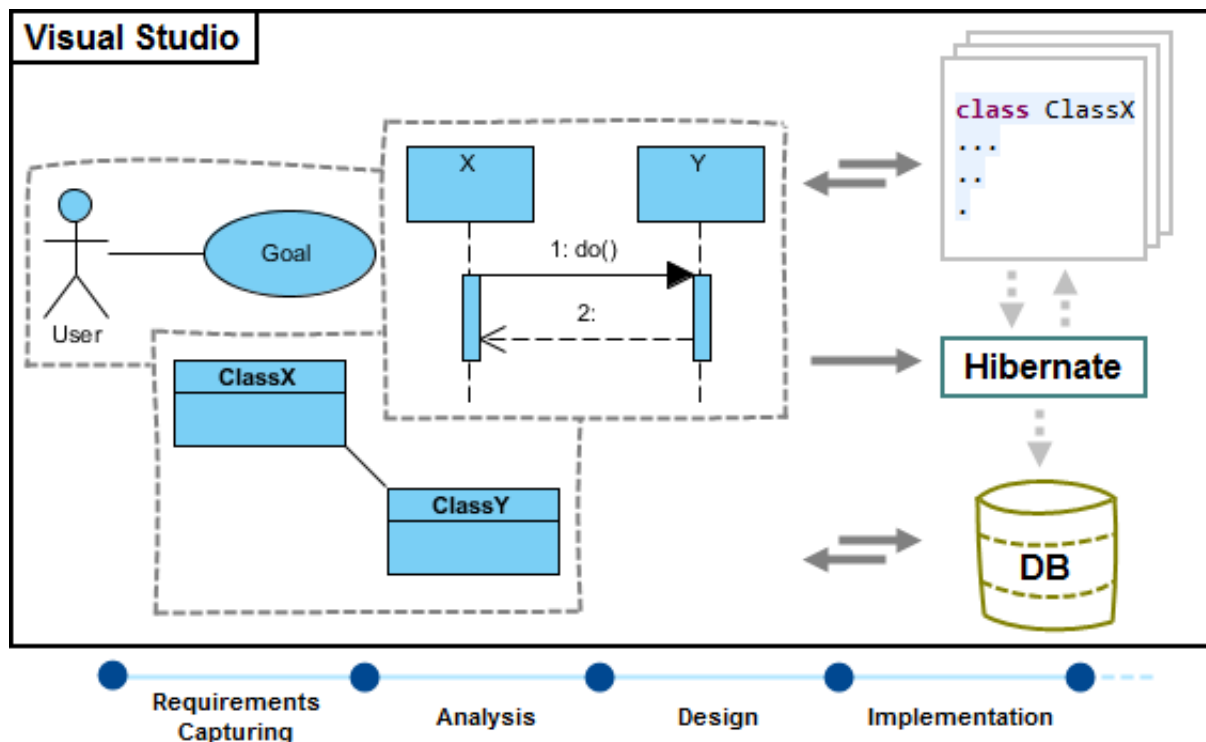


How to integrate Visual Paradigm with Visual Studio

Visual Paradigm enables you to integrate the visual modeling environment with [Visual Studio](#), providing full software development life cycle support. By designing your software system in Visual Paradigm, you can generate programming source code from class diagram to an Visual Studio project. Also, you can reverse engineer your source code into [class models](#) in Visual Paradigm.

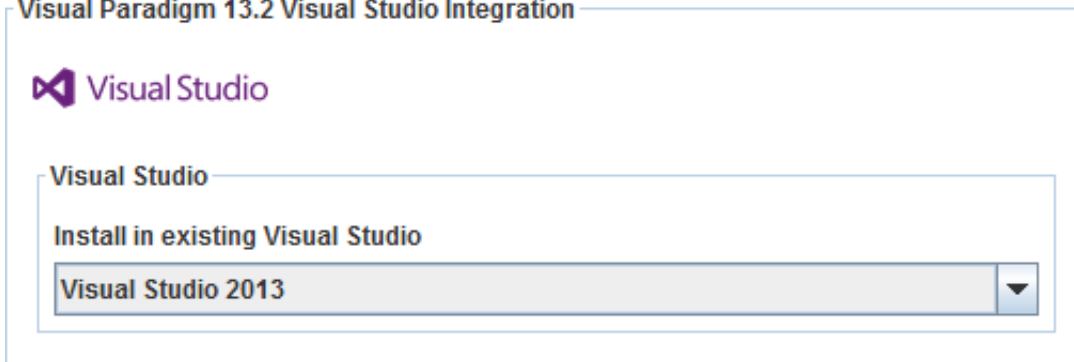


Installation

First of all, please make sure you have Visual Studio 2008 or above installed. To install Visual Studio Integration from Visual Paradigm:

1. In Visual Paradigm, select **Window > Integration > IDE Integration...** from the toolbar.
2. Select **Visual Studio Integration**. You can run Visual Paradigm in multiple IDEs. In other words, if you need you can select multiple IDEs here. Click **Next**.
 - Eclipse Integration
 - NetBeans Integration
 - IntelliJ IDEA / Android Studio Integration
 - Visual Studio Integration

Visual Paradigm Visual Studio Integration can only be installed by the user with Computer administrator account
3. Select the version of Visual Studio to integrate with. Click **Next** to start copying files to your IDE.



Un-Installation

To remove the installation with an integrated IDE, perform an uninstallation.

1. In Visual Paradigm, select **Window > Integration > IDE Integration...** from the toolbar.
2. Select the radio button **Uninstall**.
3. Select **Visual Studio Integration**.
 Install Uninstall

Visual Paradigm 13.2



Perform business process modeling (BPMN), UML modeling, use case management and database design (ERD) in your favorite IDE, thanks to the seamless integration with the following IDEs.

- Eclipse Integration
- NetBeans Integration
- IntelliJ IDEA / Android Studio Integration
- Visual Studio Integration

Visual Paradigm Visual Studio Integration can only be installed by the user with Computer administrator account

4. Click **Next**.
5. Click **Next** for file removal.