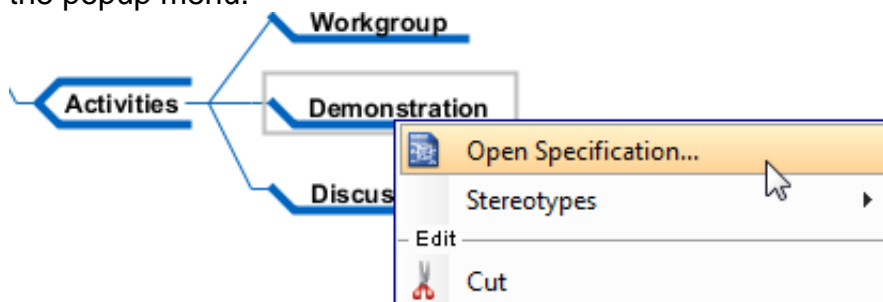

Adding references to Mind Map nodes

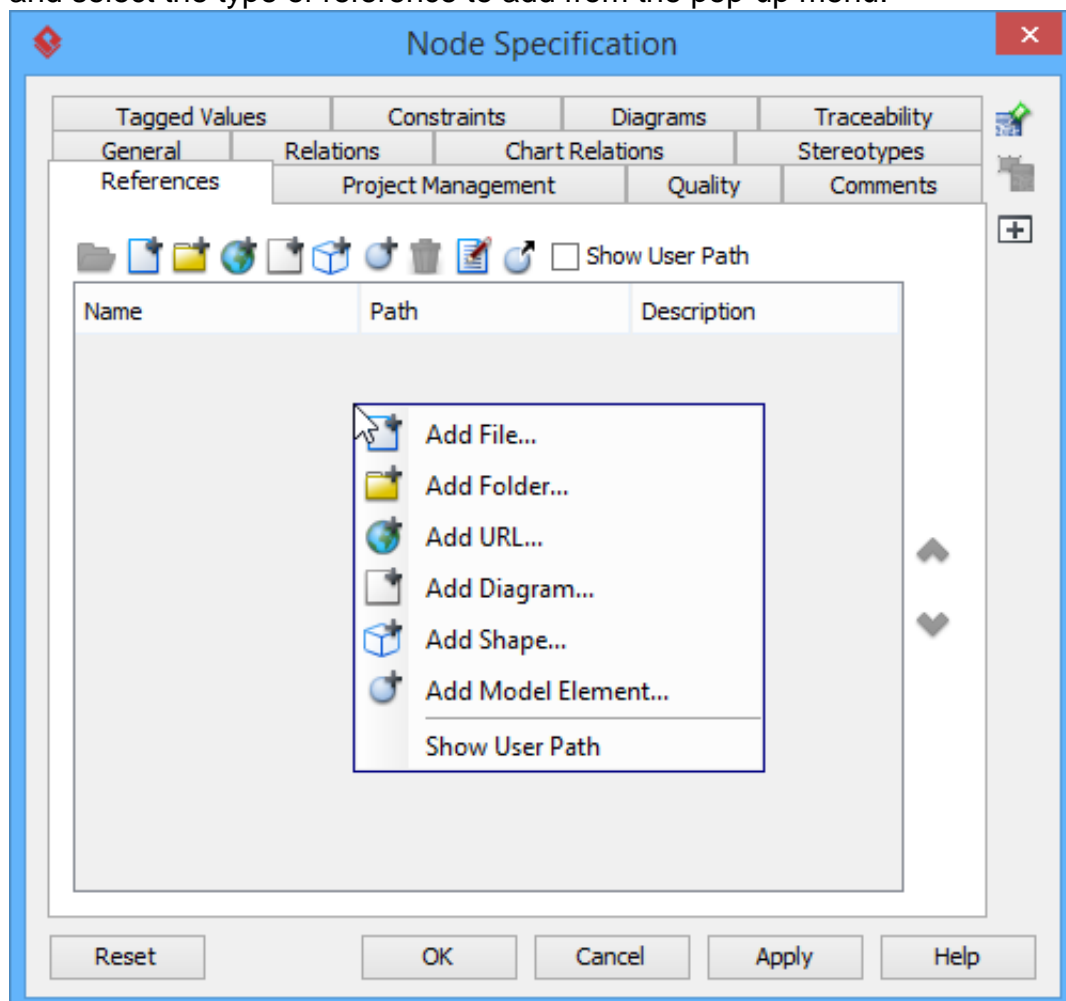
You can add references to node, to reference to both internal and external resources such as a shape, a diagram, a file, a URL, etc. For example, to make a node *Prepare Agenda* link to a document of agenda template. This makes a [mind map](#) more informative by providing additional information from a mind map which might be casually developed.

To add a reference:

1. Right click on the node you want to add reference and select Open Specification... from the popup menu.



2. In the node specification, open the **References** tab. Right click on the center of pane and select the type of reference to add from the pop-up menu.



Type of reference	Description
File	An external file.
Folder	An external folder.
URL	A URL. For example, https://www.visual-paradigm.com
Diagram	A diagram in the opening project, such as a requirement diagram.
Shape	A shape in the opening project, such as a use case shape on a use case diagram.
Model element	A model element in the opening project, such as a use case.

3. Supply the information of reference such as the file path of a file reference, a diagram for a diagram reference.
4. Click **OK** to confirm.

Once a reference has been added, you can open it from the **References** tab by right clicking on it and selecting **Open...** from the popup menu.

